

# Monthly Report on Short-term Transactions of Electricity in India

September 2024



Economics Division  
Central Electricity Regulatory Commission  
6th, 7th & 8th Floors, Tower B, World Trade Centre  
Nauroji Nagar, New Delhi- 110029



# Contents

S.No.	Contents	Page No
	Contents	i
	List of Tables	ii
	List of Figures	iii
	Abbreviations	iv
1	Introduction	1
2	Volume of Short-term Transactions of Electricity and DSM	1
3	Price of Short-term Transactions of Electricity and DSM Charges	4
3.1	<i>Price of electricity transacted through Traders</i>	4
3.2	<i>Price of electricity transacted through Power Exchanges</i>	4
3.3	<i>DSM Charges</i>	4
4	Trading Margin	5
5	Volume of Short-term Transactions of Electricity (Regional Entity-wise)	5
6	Congestion on Inter-State Transmission Corridor for Day-Ahead Market and Real-Time Market on Power Exchanges	6
7	Volume and Price of Renewable Energy Certificates (RECs)	7
8	Inferences	8

S.No.	List of Tables	Page No.
Table-1	Volume of Short-term Transactions of Electricity and DSM (All India)	11
Table-2	Percentage Share of Electricity Transacted by Trading Licensees	13
Table-3	Price of Electricity Transacted through Traders	14
Table-4	Price of Electricity Transacted through Traders (Time-wise)	14
Table-5	Price of Electricity Transacted in Day Ahead Market	14
Table-6	Price of Electricity Transacted in Green Day Ahead Market	14
Table-7	Price of Electricity Transacted in High Price Day Ahead Market	14
Table-8	Price of Electricity Transacted in Real Time Market	14
Table-9	Volume and Price of Electricity in Term Ahead Market of IEX	14
Table-10	Volume and Price of Electricity in Term Ahead Market of PXIL	15
Table-11	Volume and Price of Electricity in Term Ahead Market of HPX	15
Table-12	Volume and Price of Electricity in Green Term Ahead Market of IEX	15
Table-13	Volume and Price of Electricity in Green Term Ahead Market of PXIL	15
Table-14	Volume and Price of Electricity in Green Term Ahead Market of HPX	15
Table-15	Volume and Price of Electricity in High Price Term Ahead Market of IEX	15
Table-16	Volume and Price of Electricity in High Price Term Ahead Market of PXIL	15
Table-17	Volume and Price of Electricity in High Price Term Ahead Market of HPX	15
Table-18	Volume of Electricity Sold through Bilateral	17
Table-19	Volume of Electricity Purchased through Bilateral	19
Table-20	Volume of Electricity Sold in Day Ahead Market through Power Exchanges	20
Table-21	Volume of Electricity Purchased in Day Ahead Market through Power Exchanges	23
Table-22	Volume of Electricity Sold in Green Day Ahead Market through Power Exchanges	24
Table-23	Volume of Electricity Purchased in Green Day Ahead Market through Power Exchanges	26
Table-24	Volume of Electricity Sold in High Price Day Ahead Market through Power Exchanges	27
Table-25	Volume of Electricity Purchased in High Price Day Ahead Market through Power Exchanges	27
Table-26	Volume of Electricity Sold in Real Time Market through Power Exchanges	28
Table-27	Volume of Electricity Purchased in Real Time Market through Power Exchanges	32
Table-28	Total Volume of Net Transactions through Power Exchanges (Regional Entity-wise)	34
Table-29	Details of Congestion in Power Exchanges	38
Table-30	Volume of Transactions through Power Exchanges (Day-wise)	39
Table-31(a)	Price of Day Ahead Transactions of Electricity (Day-Wise)	40
Table-31(b)	Price of Green Day Ahead Transactions of Electricity (Day-Wise)	41
Table-31(c)	Price of Real Time Transactions of Electricity (Day-Wise)	42
Table-31(d)	Price of High Price Day Ahead Transactions of Electricity (Day-Wise)	43
Table-32	Volume of Transactions through Power Exchanges (Regional Entity-wise)	44
Table-33	Volume and Charges under DSM (Day wise)	48
Table-34	Volume of Electricity Under drawal/ Over Injection (Exported) under DSM	49
Table-35	Volume of Electricity Over drawal/ Under Injection (Imported) under DSM	54
Table-36	Volume and Price of Renewable Energy Certificates (RECs) transacted through Power Exchanges and through Traders (Bilateral)	59
Table-37(a)	Volume and Price of Cross Border Trade through Day Ahead Market at IEX	59
Table-37(b)	Volume and Price of Cross Border Trade through Real Time Market at IEX	59

<b>S. No.</b>	<b>List of Figures</b>	<b>Page No.</b>
Figure-1	Volume of various kinds of Electricity Transactions in Total Electricity Generation	11
Figure-2	Volume of Short-term Transactions of Electricity and DSM Volume	11
Figure-3	Volume transacted in different markets segments on Power Exchanges	12
Figure-4	Volume of transactions on Power Exchange and DSM Volume (Day-wise)	12
Figure-5	Percentage Share of Electricity Transacted by Trading Licensees	13
Figure-6	Weighted Average Price of Short-term Transactions of Electricity	16
Figure-7	Weighted Average Price of Short-term Transactions of Electricity (Day-wise)	16

## Abbreviations

<b>Abbreviation</b>	<b>Expanded Version</b>
ABSP_ANTP	Acme Bhiwadi Solar Power Private Limited, Anantpur
ACBIL	ACB (India) Limited
ACP	Area Clearing Price
ACV	Area Clearing Volume
ACME_SLR	ACME Solar Power Project
ACME_RUMS	Acme Rewa Ultra Mega Solar Project
ADANI_4RE	Adani Renewable Energy Holding Four Limited
ADANI GREEN	Adani Green Energy Limited
ADANIHB_SLR	Adani Hybrid Energy Jaisalmer One Limited (Solar)
ADANI_SLR 4	Adani Solar Energy Four Private Limited
ADANIHB_WIND	Adani Hybrid Energy Jaisalmer One Limited (Wind)
ADEPT	Adept Renewable Technologies Private Limited
ADY1_PVGD	Adyah Solar Energy Pvt Ltd., Block 1 Pavagada Solar Park
ADY2_PVGD	Adyah Solar Energy Pvt Ltd., Block 2 Pavagada Solar Park
ADY3_PVGD	Adyah Solar Energy Pvt Ltd., Block 3 Pavagada Solar Park
ADY6_PVGD	Adyah Solar Energy Pvt Ltd., Block 6 Pavagada Solar Park
ADY10_PVGD	Adyah Solar Energy Pvt Ltd., Block 10 Pavagada Solar Park
ADY13_PVGD	Adyah Solar Energy Pvt Ltd., Block 13 Pavagada Solar Park
AGEMPL BHUJ	Adani Green Energy (MP) Ltd.,Bhuj
AHEJOL_S_FTG2	Adani Hybrid Energy Jaisalmer One Limited (SOLAR)
AHEJOL_W_FTG2	Adani Hybrid Energy Jaisalmer One Limited (WIND)
AHEJ2L_SOLAR	Adani Hybrid Energy Jaisalmer Two Limited (Solar)
AHEJ3L_SOLAR	Adani Hybrid Energy Jaisalmer Three Limited (Solar)
AHEJ4L_SOLAR	Adani Hybrid Energy Jaisalmer Four Limited-Hybrid Solar
AHEJ4L_WIND	Adani Hybrid Energy Jaisalmer Four Limited-Hybrid Wind
AHSP_ANTP	Acme Hisar Solar Power Private Limited,Anantpur
AKS_PVGD	ACME Kurukshetra Solar Energy Pvt. Ltd
AKSP_ANTP	Acme Karnal Solar Power Private Limited,Anantpur
ALFANAR_BHUJ	Alfanar Group Wind Project, Bhuj, Gujarat
ALTRA XERGI	Altra Xergi Power Private Limited
AMP_GREEN6	Amp Energy Green Six Private Limited
AMPLUS_AGES	Amplus Ages Private Limited
AMPS Hazira	Arcelor Mittal Nippon Steel, Hazira
APTEL	Appellate Tribunal for Electricity
ARERJL_SLR	Adani Renewable Energy Park Rajasthan Ltd.
ARINSUM_RUMS	Solenergi RewaUltraMega Solar Project
ARS_PVGD	ACME REWARI Solar Power Pvt Ltd.
ARTPP	Adani Power Limited - Raipur TPP
ASEJTL_SLR	Adani Solar Energy Jodhpur Two Ltd.
AVAADA1_PVGD	Avaada Solar Energy Private Ltd., Pavagada Project 1
AVAADA2_PVGD	Avaada Solar Energy Private Ltd., Pavagada Project 2
AVADARJHN_SLR	Avaada Rjhn Private Limited_Solar
AYANA_NPKUNTA	Ayana Power, NP Kunta
AZURE_ANTP	Azure Power,Anantpur
AZURE_PVGD	Azure Power,Pavagada
AZURE_SLR	Azure Power Solar Power Project
AZURE34_SLR	Azure Power 34 Pvt. Ltd. Solar Power Project
AZURE43_SLR	Azure Power Forty Three Private Limited
BALCO	Bharat Aluminum Company Limited
BARC	Bhabha Atomic Research Centre
BASOCHHU HEP	Basochhu Hydropower Plant Bhutan
BBMB	Bhakra Beas Management Board

BETAM_TCN	Betam Wind Energy Private Limited, Tuticorin
BHADRAVATHI HVDC	Bhadravathi High Voltage Direct Current Link
BRBCL	Bhartiya Rail Bijlee Company Limited
CEA	Central Electricity Authority
CERC	Central Electricity Regulatory Commission
CGPL	Coastal Gujarat Power Limited
CHUKHA HEP	Chhukha Hydroelectric Project, Bhutan
CHUZACHEN HEP	Chuzachen Hydro Electric Power Project
CLEAN_SLR	Clean Solar Power Pvt. Ltd
CLEANSPL_SLR	Clean Solar Jodhpur Pvt Ltd
COASTGEN	Coastal Energen Private Limited
DAGACHU	Dagachhu Hydro Power Corporation
DAM	Day Ahead Market
DEVKOOT_SLR	Devkoot Solar Power Plant, NTPC Green Energy Ltd.
DCPP	Donga Mahua Captive Power Plant
DD&DNH	Daman and Diu & Dadar Nagar Haveli
DGEN MEGA POWER	DGEN Mega Power Project
DGPCL Bhutan	Druk Green Power Corporation Ltd., Bhutan
DHARIWAL POWER	Dhariwal Power Station
DIKCHU HEP	Dikchu Hydro-electric Project, Sikkim
DOYANG HEP	DoyangHydro Electric Project
DSM	Deviation Settlement Mechanism
DVC	Damodar Valley Corporation
EDEN_SLR	Eden RE Cite Private limited
EMCO	EMCO Energy Limited
ESPL_RADHANESDA	Electro Solaire Private Limited, Radhanesda
ESSAR POWER	Essar Power Limited
FORTUM1_PVGD	Fortum Finnsurya Energy Private Ltd, Pavagada Project 1
FORTUM2_PVGD	Fortum Finnsurya Energy Private Ltd, Pavagada Project 2
FRV_ANTP	Fotowatio Renewable Ventures, Anantapur
FRV_NPK	Fotowatio Renewable Ventures, NP Kunta
GIPCL_RADHANESDA	Gujarat Industries Power Company Ltd, Radhanesda
GIWEL_BHUJ	Green infra wind energy Limited, Bhuj
GIWEL_TCN	Green Infra Wind Energy Limited, Tuticorin
GMR CHHATTISGARH	GMR Chhattisgarh Energy Limited
GMR KAMALANGA	GMR Kamalanga Energy Ltd.
G-DAM	Green Day Ahead Market
GRIAN	Grian Energy Private Limited
GSECL P-II	GSECL Raghnesda Solar Park (Phase-II)
G-TAM	Green Term Ahead Market
HPX	Hindustan Power Exchange Limited
HP-DAM	High Price Day Ahead Market
HP-TAM	High Price Term Ahead Market
HVDC ALPD	Alipurduar High Voltage Direct Current Link
HVDC CHAMPA	Champa-Kurukshetra High Voltage Direct Current Link
HVDC PUS	Pasauli High Voltage Direct Current Link
HVDC RAIGARH	Raigarh-Pugalur High Voltage Direct Current Link
IBEUL	Ind Bharat Energy Utkal Limited
IEX	Indian Energy Exchange Limited
IGSTPS	Indira Gandhi Super Thermal Power Station Jhajjar
IL&FS	Infrastructure Leasing & Financial Services Limited
INOX_BHUJ	INOX Wind Limited, Bhuj, Gujarat
J&K	Jammu & Kashmir
JAYPEE NIGRIE	Jaypee Nigrie Super Thermal Power Project

JHABUA POWER MP	Jhabua Thermal Power Project
JINDAL POWER	Jindal Power Limited
JINDAL STAGE-II	Jindal Power Ltd Stage II
JITPL	Jindal India Thermal Power Ltd.
JORETHANG	Jorethang Loop Hydroelectric Power Project
JSW_RENEW_2	JSW Renew Energy Two Limited
KAPP 3&4	Kakrapar Atomic Power Station Unit 3 & 4
KARCHAM WANGTOO	Karcham Wangtoo H.E. Project
KBUNL	Kanti Bijlee Utpadan Nigam Limited
KHURJA STPP	Khurja Super Thermal Power Plant
KORBA WEST POWER	Korba West Power Company Limited
KOTESHWAR	Koteshwar Hydro Power project
KREDL_PVGD	Karnataka Renewable Energy Development Ltd,Pavagada
KSK MAHANADI	KSK Mahanadi Power Ltd
KSMPL_SLR	Kilaj Solar (Maharashtra) Private Limited
KURICHU HEP	Kurichhu Hydro-electric Power Station, Bhutan
LANKO_AMK	LancoAmarkantak Power Private Limited
LANKO BUDHIL	LancoBudhil Hydro Power Private Limited
LANKOKONDAPALLY	Lanco Kondapally Power Private Limited
LOKTAK	Loktak Power Project
MAHINDRA_RUMS	Mahindra Rewa Ultra Mega Solar Project
MAHOBASLR	Mahoba Solar Power Project
MALANA	Malana Hydroelectric Plant
MANGDECHU HEP	Mangdechhu Hydroelectric Project, Mangdechhu River, Bhutan
Maruti Coal	Maruti Clean Coal and Power Limited
MB POWER	MB Power Ltd
MEENAKSHI	Meenakshi Energy Private Limited
MRPL	Mahindra Renewables Private Limited
MSEPL	Masaya Solar Energy Private Limited
MSRPL	Mega Solis Renewables Pvt. Ltd.
MTPS	TATA Power Mundra Thermal Power Station
MTPS II	Muzaffarpur Thermal Power Station – Stage II
MYTRAH_TCN	Mytrah Energy (India) Private Limited,Tuticorin
MU	Million Units
NAPP	Narora Atomic Power Plant
NCR ALLAHABAD	North Central Railway, Allahabad
NEEPCO	North Eastern Electric Power Corporation Limited
NEP	Nepal
NFL	National Fertilisers Limited
NHPC STATIONS	National Hydro Electric Power Corporation Ltd. Stations
NJPC	Nathpa Jhakri Hydroelectric Power Station
NLC	Neyveli Lignite Corporation Limited
NLDC	National Load Dispatch Centre
NOKHRA_STPP	Nokhra Solar Power Plant, NTPC Green Energy Ltd.
NPGC	Nabinagar Power Generating Company (Pvt.) Limited
NREL_DAYAPAR (W)	NREL-Dayapar Wind
NSPCL	NTPC - SAIL Power Company Private Limited
NTECLVallur	NTPC Tamil Nadu Energy Company Limited Vallur
NTPC_ANTP	NTPC Anantapur
NTPC STATIONS	National Thermal Power Corporation Ltd. Stations
NTPL	NLC Tamil Nadu Power Limited
NVVN	NTPC Vidyut Vyapar Nigam Limited
OCF	Order Carry Forward
ONEVOLT	Onevolt Energy Private Limited

ONGC Platana	ONGC Tripura Power Company
OPGC	Odisha Power Generation Corporation
ORANGE_TCN	Orange Renewable Power Pvt. Ltd,Tuticorin
OSTRO	Ostro Energy Private Limited
OTC	Over The Counter
PARAM_PVGD	Parampujya Solar Energy Private Ltd
PARE HEP	Pare hydroelectric project, Arunachal Pradesh
PXIL	Power Exchange India Limited
RAMPUR HEP	Rampur Hydro Electric Power Project
RANGIT HEP	Rangit Hydroelectric power project
RANGANADI HEP	Ranganadi Hydro Electric Power Project, Arunachal Pradesh
RAP-B	Rajasthan Atomic Power Plant-B
RAP-C	Rajasthan Atomic Power Plant-C
RAPP 7&8	Rajasthan Atomic Project 7&8
REC	Renewable Energy Certificate
REGL	Raigarh Energy Generation Limited
RENEW_BHACHAU	ReNew Power Limited, Bhachau
RENEW_BHUJ	ReNew Power Limited, Bhuj
RENEW_PVGD	ReNew Wind Energy (TN2) Private Limited
RENEW_ROSHNI FATEHGARH	Renew Surya Roshni Private Limited-Fatehgarh-III PS
RENEW_SAAVAN	Renew Surya Aayan Private Limited
RENEW_SLR_BKN	Renew Solar Bikaner
RENEW_SOJAS	Renew Surya Ojas Private Limited-Wind
RENEW_SPRATAP	Renew Surya Pratap Private Limited
RENEW_SR_SLR	Renew Surya Ravi Private Limited (Solar)
RENEW_SVIHAAN	Renew Surya Vihaan Private Limited
RENEW_ROSHNI	Renew Surya Roshni Private Limited Koppal PS
RENEWJH_SLR	Renew Solar Energy (Jharkhand Three) Private Limited
RENEWURJA_SLR	ReNew Solar Urja Private Limited
RGPPL_IR	Ratnagiri Gas and Power Private Ltd., supply to Indian Railways
RGPPL_OTHER	Ratnagiri Gas and Power Private Limited
RISING_SLR	Rising Sun Energy Pvt. Ltd.
RLDC	Regional Load Dispatch Centre
RONGNICHU HEP	Rongnichu Hydro Electric Power Project
RPREL	Raipur Energen Limited
RSTPS_FSPP	NTPC Ramagundam STPS- Floating Solar PV Project
RTC	Round The Clock
RTM	Real Time Market
SasanUMPP	Sasan Ultra Mega Power Project
SB_SLR	Soft Bank Solar
SB6_POKARAN	SB Energy Six Private Limited, Pokaran
SBG CLEANTECH_SLR	SBG Cleantech Ltd
SBG_NPK	SB Energy Solar Private Limited,NP Kunta
SBG_PVGD	SB Energy Solar Private Limited,Pavagada
SBSR_SLR	SBSR Power Cleantech Eleven Private Limited
SEMBCORP	Sembcorp Gayatri Power Ltd
SIMHAPURI	Simhapuri Energy Private Limited
SKS Power	SKS Power Generation Chhattisgarh Limited
SESPL	Srijan Energy Systems Pvt. Ltd.
SINGOLI BHATWARI HEP	Singoli-Bhatwari Hydroelectric Project, Uttarakhand
SKRPL	Sitac Kabini Renewables Pvt. Ltd.
SPRNG_NPKUNTA	Sprng Energy, NP Kunta
SPRING_PUGALUR	Spring Solar Power Private Limited, Pugalur
SUL	Sikkim Urja Limited



TALA HEP	Tala Hydroelectric Project, Bhutan
TASHIDENG HEP	Tashiding Hydro Electric Project, Sikkim
TATA_ANTP	TATA Power Anantapur
TATA_PVGD	Tata Power Renewable Energy Ltd
TATA_SLR	Tata Solar
TAM	Term Ahead Market
TEESTA STG3	Teesta Stage 3 Hydro Power Project
TEHRI	Tehri Hydro Electric Power Project
TESPL	Transition Energy Services Private Limited
THAR1_SLR	Thar Surya Ravi One Pvt Ltd
THERMAL POWERTECH	Thermal Powertech Corporation India Limited
TPREL_RADHANESDA	Tata Power Renewable Energy Limited, Radhanesda
TPSL	TP Saurya Limited
VINDHYACHAL HVDC	Vindhyachal High Voltage Direct Current Link
WA	Weighted Average
YARROW_PVGD	Yarrow Infra Structure Private Ltd

## 1. Introduction

1.1. A well-functioning electricity market requires an effective market monitoring process. The monthly report on short-term transactions of electricity, published by CERC since 2008 as part of its market monitoring process, provides a snapshot of key aspects of short-term transactions of electricity in India. Here, “short-term transactions of electricity” refers to the contracts of less than one year period for electricity transacted (inter-State) - through Trading Licensees, directly between entities and on Power Exchanges (Indian Energy Exchange Ltd. (IEX), Power Exchange India Ltd. (PXIL) and Hindustan Power Exchange Ltd. (HPX)). “DSM Volume” includes the volume recorded under Deviation Settlement Mechanism. The main objectives of the report are: (i) to analyse the volume and price of the short-term transactions of electricity; (ii) to assess the competition among the market players; (iii) to analyse the effect of congestion on the volume of electricity transacted through power exchanges; (iv) to provide information on volume and price of Renewable Energy Certificates (RECs) transacted through power exchanges; and (v) to disseminate all other relevant market information. The analysis of short-term transactions of electricity and DSM volume during the month of **September 2024** is presented in the following sections.

## 2. Volume of Short-term Transactions of Electricity and DSM

2.1. During September 2024, total electricity generation, excluding generation from renewable and captive power plants in India, was 130005.46 MU (Table-1). Of the total electricity generation, 13.36% was transacted through short-term and DSM, comprising 7.09% through power exchanges {Day Ahead Market (DAM) (including G-DAM) and Real Time Market (RTM)}, followed by 4.15% through bilateral (through Traders and Term-Ahead contracts on power exchanges), and directly between entities, and 2.12% through DSM (Table-1 & Figure-1).

2.2. Of the total short-term transactions and DSM volume (17371.74 MU<sup>1</sup>), 53.03% was transacted through power exchanges {DAM (including G-DAM & HP-DAM) and RTM}, followed by 31.07% through bilateral<sup>2</sup> (i.e., through Traders, Term-Ahead contracts on power exchanges and directly between entities), and 15.90% through DSM (Table-1 & Figure-2). The

---

<sup>1</sup> Volume here has been finalised in consultation with Grid India, after resolving issues that emerged post implementation of GNA Regulations and transition to new WBES software by Grid India.

<sup>2</sup> includes bilateral short-term transactions under GNA and T-GNA

daily volume of short-term transactions is shown in Table-30. Figure-4 shows the daily volume trend for short-term transactions and DSM volume.

2.3. Of the total volume of electricity transacted through power exchanges, 45.28% of the volume was transacted in DAM (including G-DAM & HP-DAM), followed by 33.72% in RTM and 21.01% in Term Ahead Market (TAM) (including G-TAM & HP-TAM) (Figure-3).

2.4. The share of electricity traded by each trading licensee is given in Table-2 & Figure-5 shows the share of the top 5 trading licensees. The volume of electricity transacted by the trading licensees includes bilateral transactions and transactions undertaken through power exchanges. There were 62 trading licensees as of September 2024. Of these, 38 trading licensees were engaged in short-term trading. The top 5 trading licensees, namely PTC India Ltd., NTPC Vidyut Vyapar Nigam Ltd., Adani Enterprises Ltd., Tata Power Trading Company (P) Ltd., and Manikaran Power Ltd., had a share of 77.52% in the total volume of electricity traded by all the licensees.

2.5. Herfindahl-Hirschman Index (HHI), a commonly accepted index to calculate market concentration, has been used to measure competition among trading licensees. An increase in the HHI generally indicates a decrease in competition and an increase in market concentration, and vice versa. The HHI below 0.15 indicates non-concentration, the HHI between 0.15 and 0.25 indicates moderate concentration, and the HHI above 0.25 indicates high concentration. The HHI has been computed based on the volume of electricity traded (inter-State & intra-State) by inter-State trading licensees, and it was 0.1609 for the month of September 2024, which indicates the moderate concentration of market power (Table-2).

2.6. The volume of electricity transacted in the DAM of IEX and HPX was 4562.10 MU and 0.08 MU, respectively, while no electricity was transacted in the DAM of PXIL. The volume of total buy bids and sell bids was 6851.73 MU and 11383.62 MU, respectively in IEX; 0.90 MU and 153.57 MU, respectively, in PXIL; & 0.33 MU and 93.70 MU, respectively in HPX.

2.7. Of the total volume of electricity transacted in the DAM of IEX, the volume sold by the neighbouring countries of India was 347.16 MU, while no volume was purchased by the neighbouring countries, under the Cross Border Trade of electricity through power exchanges

(Table-37(a)). No Cross Border transaction of electricity was undertaken through PXIL and HPX.

2.8. The volume of electricity transacted in the G-DAM of IEX was 717.89 MU, while no electricity was transacted in the G-DAM of PXIL and HPX. The volume of total buy bids and sell bids was 2215.07 MU and 1179.83 MU, respectively, in IEX. No bids were received in PXIL and HPX.

2.9. No electricity was transacted in the HP-DAM of IEX, PXIL and HPX. While the volume of total sell bids was 2531.28 MU, no buy bids were received in IEX. No bids were received in PXIL and HPX.

2.10. The volume of electricity transacted in the RTM of IEX and PXIL was 3912.78 MU and 18.99 MU, respectively, while no electricity was transacted in the RTM of HPX. The volume of total buy bids and sell bids was 5359.98 MU and 7480.35 MU, respectively in IEX, 40.81 MU and 196.67 MU in PXIL, & 0.20 MU and 3.30 MU, respectively in HPX. The variation in the volume of buy bids and sell bids placed through power exchanges shows variation in the demand and supply position.

2.11. Of the total volume of electricity transacted in the RTM of IEX, the volume sold by the neighbouring countries of India was 23.14 MU, while no volume was purchased, under the Cross Border Trade of electricity through power exchanges (Table-37(b)). No Cross Border transaction of electricity was undertaken through PXIL and HPX.

2.12. The volume of electricity transacted in the TAM of IEX, PXIL and HPX was 1086.17 MU, 695.24 MU, and 562.06 MU, respectively (Table-9, Table-10 & Table-11). The volume of electricity transacted in the Green Term Ahead Market (G-TAM) of IEX, PXIL and HPX was 10.38 MU, 17.36 MU, and 77.32 MU, respectively (Table-12, Table-13 & Table-14).

2.13. The volume of electricity transacted in the HP-TAM of PXIL was 0.94 MU. No electricity was transacted in HP-TAM of IEX and HPX (Table-15, Table-16 & Table-17).

### 3. Price of Short-term Transactions of Electricity and DSM charges

3.1. **Price of electricity transacted through Traders:** The minimum, maximum and weighted average sale prices for the electricity transacted through traders were ₹1.68/kWh, ₹10.00/kWh and ₹6.70/kWh, respectively (Table-3). The weighted average sale prices were also computed for the electricity transacted during Round the Clock (RTC), Peak and Off-peak periods separately, and the sale prices were ₹6.79/kWh, ₹9.50/kWh and ₹5.85/kWh, respectively (Table-4).

3.2. **Price of electricity transacted through Power Exchanges:** The minimum, maximum and weighted average prices for the electricity transacted in the DAM of IEX were ₹0.40/kWh, ₹10.00/kWh and ₹4.28/kWh, respectively. These prices in the DAM of HPX were ₹10.00/kWh, ₹10.00/kWh and ₹10.00/kWh respectively. (Table-5). The minimum, maximum and weighted average prices for the electricity transacted in the G-DAM of IEX were ₹1.00/kWh, ₹10.00/kWh and ₹3.81/kWh, respectively (Table-6). The minimum, maximum and weighted average prices for the electricity transacted in the RTM of IEX were ₹0.14/kWh, ₹10.00/kWh and ₹3.67/kWh, respectively. These prices in the RTM of PXIL were ₹1.88/kWh, ₹10.00/kWh and ₹9.26/kWh respectively (Table-8). The weighted average price of electricity transacted in the TAM of IEX, PXIL and HPX was ₹6.56/kWh, ₹7.30/kWh and ₹7.53/kWh, respectively (Table-9, Table-10 and Table-11). The weighted average price of electricity transacted in the G-TAM of IEX, PXIL and HPX was ₹6.28/kWh, ₹4.71/kWh and ₹4.06/kWh, respectively (Table-12, Table-13 and Table-14). The weighted average price of electricity transacted in the HP-TAM of PXIL was ₹14.57/kWh (Table-16). No electricity was transacted in HP-DAM & HP-TAM of IEX; in DAM, G-DAM & HP-DAM of PXIL; and in G-DAM, HP-DAM, RTM & HP-TAM of HPX.

3.3. **DSM Charges:** The minimum, maximum and average charges under DSM was ₹0.50/kWh, ₹14.37/kWh and ₹4.85/kWh, respectively (Table-33).

3.4. The comparison of weighted average prices of electricity transacted through trading licensees and power exchanges (collective transactions) is shown in Figure-6. The daily prices of electricity transacted through various segments at power exchanges and their comparison are shown in Table-31(a), (b), (c) & (d) and Figure-7. The daily volume and charges under DSM are shown in Table-33.

#### **4. Trading Margin**

4.1. As per the CERC (Procedure, Terms, and Conditions for grant of trading licence and other related matters) Regulations 2020, the trading licensees are allowed to charge a trading margin of not less than 0 paise/kWh and up to 7 paise/kWh. The weighted average trading margin charged by the trading licensees for bilateral transactions during the month was ₹0.015/kWh.

#### **5. Volume of Short-term Transactions of Electricity (Regional Entity<sup>3</sup>-Wise)**

5.1. Of the total bilateral transactions, the top 5 regional entities/states sold 36.02% of the volume. These were Madhya Pradesh, Karnataka, Jindal Power Limited Stage-II, Adani Power Limited - Raipur TPP, and Mahan Energen Limited (Unit 2). The HHI for sellers was 0.0431, which indicates non-concentration of the market (Table-18). The top 5 regional entities/states purchased 60.53% of the volume, and these were Gujarat, Uttar Pradesh, Punjab, Maharashtra and Delhi. The HHI for buyers was 0.1003, which indicates the non-concentration of market (Table-19).

5.2. Of the total DAM transactions at power exchanges, the top 5 regional entities/states sold 29.15% of the volume, and these were Uttar Pradesh, Nepal (NEA Muzaffarpur), Odisha Haryana and Jindal India Thermal Power Limited. The HHI for sellers in DAM was 0.0300, which indicates non-concentration of the market (Table-20). The top 5 regional entities/states purchased 60.33% of the volume, and these were Gujarat, Telangana, Rajasthan, DD&DNH (Daman and Diu - Dadra and Nagar Haveli) and West Bengal. The HHI for buyers in DAM was 0.1025, which indicates non-concentration of the market (Table-21).

5.3. Of the total G-DAM transactions at power exchanges, the top 5 regional entities/states sold 36.89% of the volume, and these were Adani Renewable Energy Holding Four Ltd., Himachal Pradesh, Renew Surya Ojas Pvt. Ltd. (Wind), Adani Green Energy Twenty Five B Ltd. (Infirm) and Karnataka. The HHI for sellers in G-DAM was 0.0453, which indicates non-concentration of the market (Table-22). The top 5 regional entities/states purchased 60.27% of the volume, and these were Arcelor Mittal Nippon Steel Hazira, Maharashtra, Damodar Valley

---

<sup>3</sup> In case of a State, the entities which are “selling” also include generators connected to State Grid and the entities which are “buying” also include open access consumers.

Corporation, Jharkhand and Odisha. The HHI for buyers in G-DAM was 0.0902, which indicates non-concentration of the market (Table-23).

5.4. No volume was traded in HP-DAM of all three power exchanges.

5.5. Of the total RTM transactions at power exchanges, the top 5 regional entities/states sold 42.10% of the volume, and these were Madhya Pradesh, Bihar, Haryana, Tamil Nadu, and Uttar Pradesh. The HHI for sellers in RTM was 0.0459, which indicates non-concentration of market (Table-26). The top 5 regional entities/states purchased 56.09% of the volume, and these were Punjab, Telangana, Rajasthan, West Bengal, and Kerala. The HHI for buyers in RTM was 0.0896, which indicates non-concentration of the market (Table-27).

5.6. The total volume of net short-term transactions of electricity (Regional entity-wise), i.e., the volume of net transactions through bilateral and power exchanges is shown in Table-28 & 32. The top 5 electricity selling regional entities/states of short-term transactions were Madhya Pradesh, Jindal Power Limited Stage-II, Haryana, Adani Power Limited - Raipur TPP and Jindal India Thermal Power Limited. The top 5 electricity purchasing regional entities/states of short-term transactions were Gujarat, Punjab, Telangana, Rajasthan and Maharashtra.

5.7. Of the total under-drawal/ over-injection volume under DSM in September 2024, the top 5 regional entities/states accounted for 20.42% of the volume, and these were Punjab, Madhya Pradesh, Gujarat, Rajasthan, and Maharashtra (Table-34). The top 5 regional entities/states under DSM accounted for 19.11% of the total over-drawal/ under-injection volume, and these were Mahan Energen Ltd., Tamil Nadu, Maharashtra, Uttar Pradesh, and Rajasthan (Table-35).

## **6. Congestion<sup>4</sup> on Inter-State Transmission Corridor for Day-Ahead Market and Real Time Market on Power Exchanges**

6.1. Power exchanges use a price discovery mechanism in which the aggregate demand and supply are matched to arrive at an unconstrained market price and volume. This process assumes that there is no congestion in the inter-State transmission system between different

---

<sup>4</sup> “Congestion” means a situation where the demand for transmission capacity exceeds the available transfer capability

regions. However, in reality, the system operator (NLDC), in coordination with RLDCs, limits the flow (due to congestion) in the inter-State transmission system. In such a situation, power exchanges adopt a mechanism called “Market Splitting”<sup>5</sup>.

6.2. The volume of electricity that could not be cleared due to congestion & other reasons and could not be transacted through power exchanges is the difference between unconstrained cleared volume and actual cleared volume. During the month of September 2024, congestion was experienced in DAM, G-DAM & RTM of IEX, and RTM of PXIL.

6.3. The volume of electricity that could not be cleared due to congestion in DAM, G-DAM & RTM of IEX was 0.32%, 0.03% and 0.08% respectively, of the unconstrained cleared volume. The volume of electricity that could not be cleared due to congestion in RTM of PXIL was 0.61% of the unconstrained cleared volume. In terms of time, congestion occurred 6.60% in DAM, 0.38% in G-DAM, 2.19% in RTM of IEX, and 2.40% in RTM of PXIL during the month. (Table-29).

## **7. Volume and Price of Renewable Energy Certificates (RECs)**

7.1. The concept of Renewable Energy Certificates (RECs) seeks to address the mismatch between the availability of renewable energy and the requirement of the obligated entities to meet their renewable purchase obligation by purchasing green attributes of renewable energy remotely located in the form of RECs. The REC mechanism is a market-based instrument to promote renewable sources of energy and the development of the electricity market.

7.2. One REC is equivalent to 1 MWh of electricity injected into the grid from renewable energy sources. The REC is exchanged only in the power exchanges approved by CERC within the band of a floor price and forbearance (ceiling) price as notified by CERC from time to time. The first REC trading was held on power exchanges in May 2011.

---

<sup>5</sup>“Market Splitting” is a mechanism adopted by Power Exchanges, where the market is split in the event of transmission congestion, into predetermined (by NLDC) bid areas or zones, which are cleared individually at their respective area prices such that the energy balance in every bid area is reached based upon the demand and supply in individual bid areas and using the available transmission corridor capacity between various bid areas simultaneously. As a result of this market splitting the price of electricity in the importing region, where demand for electricity is more than supply, becomes relatively higher than the price of electricity in the exporting region.



7.3. The categorisation of RECs has been dispensed with on introduction of the concept of multiplier under the CERC (Terms and Conditions for Renewable Energy Certificates for Renewable Energy Generation) Regulations, 2022, brought into effect from 05.12.2022. Accordingly, the power exchanges deactivated the Solar and Non-Solar REC contract for trading w.e.f. December 2022. A new contract named “REC” has been made available for trading on the power exchanges. Further, RECs can also be exchanged through trading licensees as per the REC Regulations 2022.

7.4. The details of REC transactions for the month of September 2024 are shown in Table-36. The market clearing volume of RECs transacted on IEX, PXIL, and HPX was 1030628, 640643 and 79449, respectively. The weighted average market clearing price of these RECs was ₹111/MWh in IEX, ₹111/MWh in PXIL, and ₹112/MWh in HPX.

7.5. The gap between the volume of buy and sell bids of RECs placed through power exchanges shows the variation in demand for the RECs. The ratio of buy bids to sell bids was 0.16, 0.10, and 0.06 in IEX, PXIL, and HPX, respectively.

7.6. The volume of RECs transacted through Trading Licensees in September 2024 was 241389. The weighted average trade price for the RECs transacted through traders was ₹114/MWh.

## **8. Inferences:**

- a) The percentage of short-term transactions of electricity and DSM volume to total electricity generation was 13.36%.
- b) Of the total short-term transactions and DSM volume (17371.74 MU), 53.03% was transacted through power exchanges {DAM (including G-DAM & HP-DAM) and RTM}, followed by 31.07% through bilateral (i.e., through Traders, Term-Ahead contracts on power exchanges and directly between entities), and 15.90% through DSM.
- c) Of the total volume of electricity transacted through power exchanges, 45.28% of the volume was transacted in DAM (including G-DAM & HP-DAM), followed by 33.72% in RTM and 21.01% in Term Ahead Market (TAM) (including G-TAM & HP-TAM)

- d) The top 5 trading licensees had a share of 77.52% in the total volume traded by all the trading licensees.
- e) The Herfindahl Hirschman Index computed for the volume of electricity traded by trading licensees was 0.1609, indicating the moderate concentration of market power.
- f) The weighted average sale price of electricity transacted through trading licensees was ₹6.70/kWh.
- g) The weighted average price of electricity transacted in DAM of IEX and HPX was ₹4.28/kWh and ₹10.00/kWh, respectively, while no electricity was transacted in DAM of PXIL. The weighted average price of electricity transacted in G-DAM of IEX was ₹3.81/kWh, while no electricity was transacted in G-DAM of PXIL and HPX. No electricity was transacted in HP-DAM of all the three power exchanges. The weighted average price of electricity transacted in the RTM of IEX and PXIL was ₹3.67/kWh and ₹9.26/kWh, respectively, while no electricity was transacted in the RTM of HPX.
- h) The weighted average price of electricity transacted in TAM of IEX, PXIL, and HPX was ₹6.56/kWh, ₹7.30/kWh, and ₹7.53/kWh, respectively. The weighted average price of electricity transacted in G-TAM of IEX, PXIL, and HPX was ₹6.28/kWh, ₹4.71/kWh, and ₹4.06/kWh, respectively. The weighted average price of electricity transacted in HP-TAM of PXIL was ₹14.57/kWh, while no electricity was traded in HPTAM of IEX and HPX.
- i) The average charge under DSM was ₹4.85/kWh.
- j) The weighted average trading margin charged by the trading licensees for bilateral transactions was ₹0.015/kWh.
- k) The top 5 electricity selling regional entities/states of short-term transactions were Madhya Pradesh, Jindal Power Limited Stage-II, Haryana, Adani Power Limited - Raipur TPP, and Jindal India Thermal Power Limited. The top 5 electricity purchasing regional entities/states of short-term transactions were Gujarat, Punjab, Telangana, Rajasthan, and Maharashtra.
- l) The top 5 under-drawing/ over-injecting regional entities/states under DSM were Punjab, Madhya Pradesh, Gujarat, Rajasthan and Maharashtra. The top 5 over-drawing/ under-

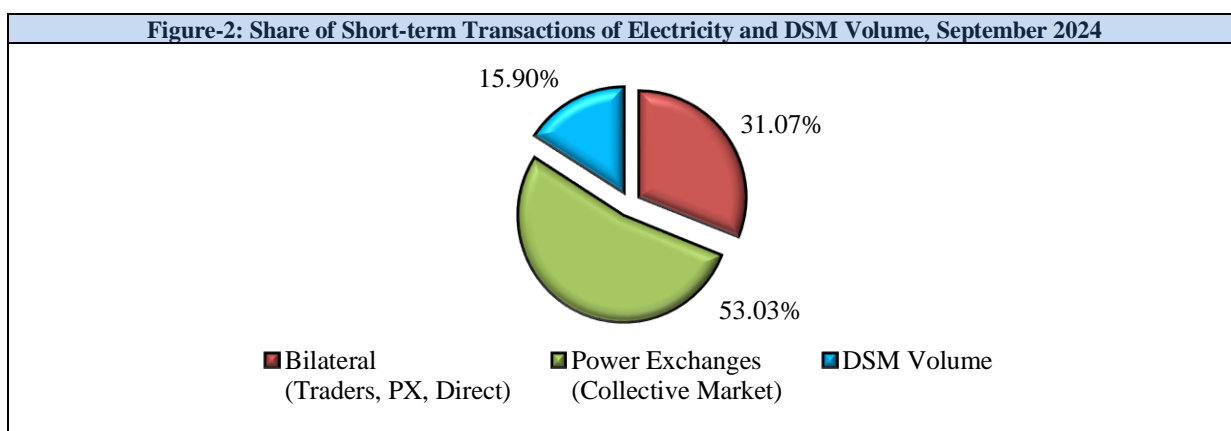
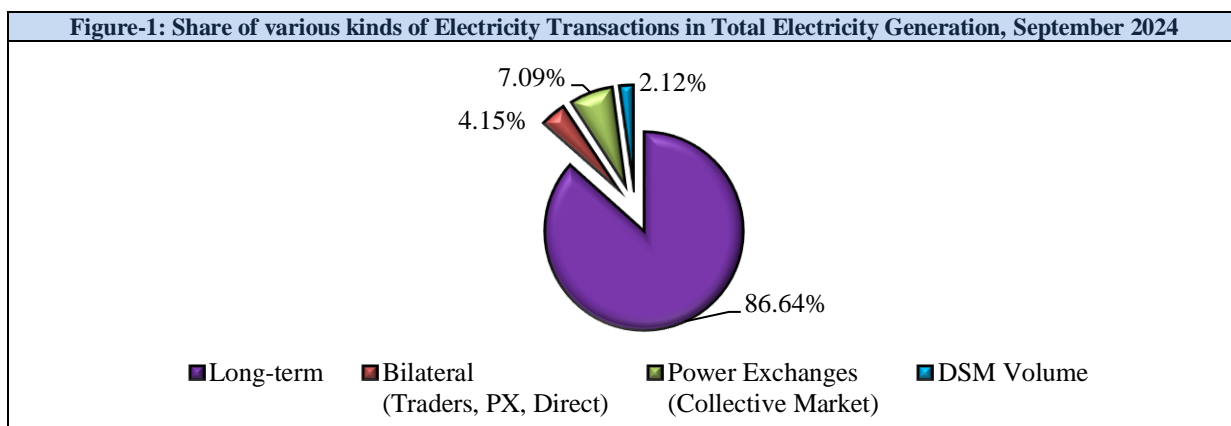
injecting regional entities/states under DSM were Mahan Energen Ltd., Tamil Nadu, Maharashtra, Uttar Pradesh, and Rajasthan.

- m) During the month of September 2024, congestion was experienced in DAM, G-DAM & RTM of IEX and RTM of PXIL. The volume of electricity that could not be cleared due to congestion in DAM, G-DAM & RTM of IEX was 0.32%, 0.03%, and 0.08%, respectively, of the unconstrained cleared volume. The volume of electricity that could not be cleared due to congestion in RTM of PXIL was 0.61% of the unconstrained cleared volume.
- n) The market clearing volume of RECs transacted on IEX, PXIL, and HPX was 1030628, 640643, and 79449, respectively. The weighted average market clearing price of these RECs was ₹111/MWh in IEX, ₹111/MWh in PXIL, and ₹112/MWh in HPX. The volume of RECs transacted through Trading Licensees in September 2024 was 241389. The weighted average trade price for the RECs transacted through traders was ₹114/MWh.

\*\*\*

Table-1: VOLUME OF SHORT-TERM TRANSACTIONS OF ELECTRICITY AND DSM (ALL INDIA), SEPTEMBER 2024				
Sr. No	Transaction	Volume (MU)	% to short-term transactions and DSM Volume	% to Total Generation
A	<b>Short-term transactions</b>			
1	Bilateral <sup>6</sup> (Traders, PX, Direct)	<b>5397.56</b>	<b>31.07</b>	<b>4.15</b>
2	Power Exchanges (Collective Market)	<b>9211.83</b>	<b>53.03</b>	<b>7.09</b>
	(i) IEX			
	(a) DAM	4562.10	26.26	3.51
	(b) RTM	3912.78	22.52	3.01
	(c) GDAM	717.89	4.13	0.55
	(d) HP-DAM	0.00	0.00	0.00
	(ii) PXIL			
	(a) DAM	0.00	0.00	0.00
	(b) RTM	18.99	0.11	0.01
	(c) GDAM	0.00	0.00	0.00
	(d) HP-DAM	0.00	0.00	0.00
	(ii) HPX			
	(a) DAM	0.08	0.0004	0.0001
	(b) RTM	0.00	0.00	0.00
	(c) GDAM	0.00	0.00	0.00
	(d) HP-DAM	0.00	0.00	0.00
B	<b>Through DSM</b>	<b>2762.34</b>	<b>15.90</b>	<b>2.12</b>
<b>Total Short-term transactions and DSM<sup>7</sup></b>		<b>17371.74</b>	<b>-</b>	<b>13.36</b>
<b>Total Generation</b>		<b>130005.46</b>	<b>-</b>	<b>-</b>

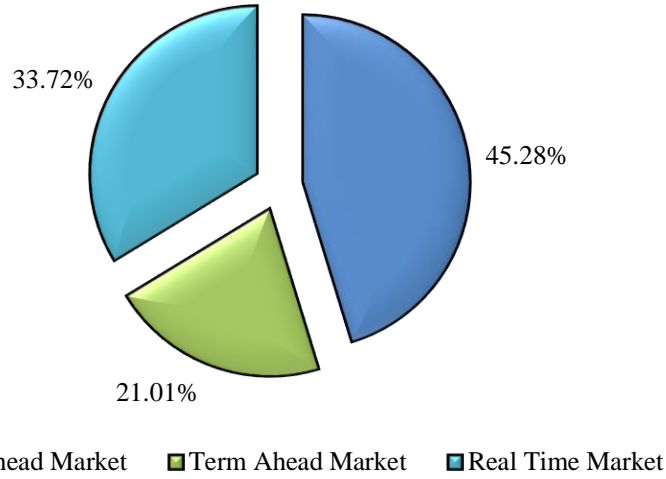
Source: NLDC



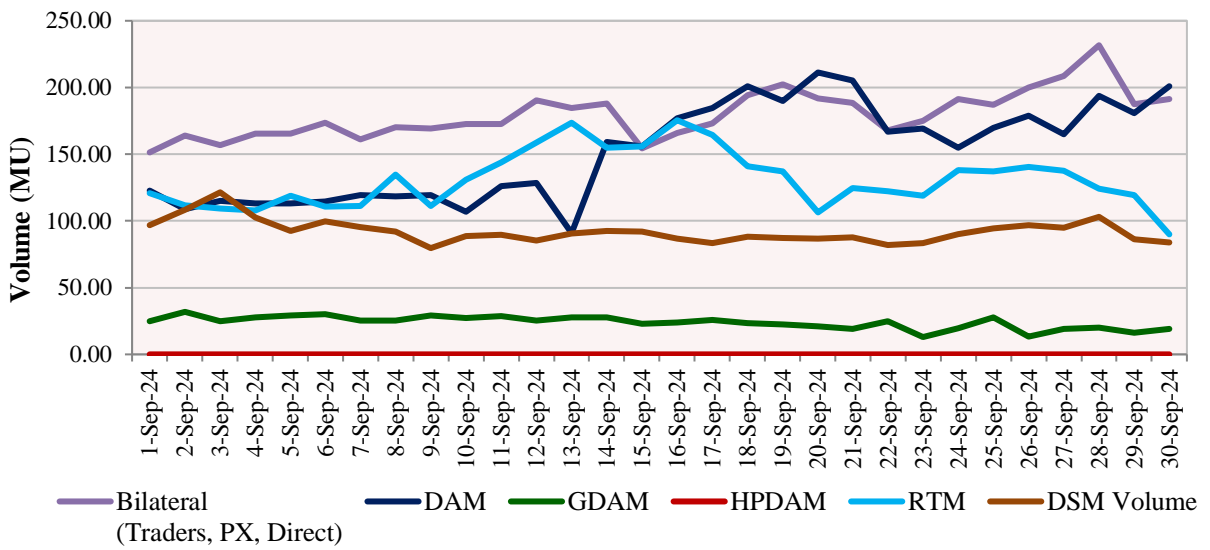
<sup>6</sup> includes bilateral short-term transactions under GNA and T-GNA

<sup>7</sup> Volume here has been finalized in consultation with Grid India, after resolving issues that emerged post implementation of GNA Regulations and transition to new WBES software by Grid India.

**Figure-3: Share of volume transacted in different markets segments on Power Exchanges, September 2024**



**Figure-4: Volume of Short-term transactions and DSM Volume, September 2024 (Day-wise)**



**Table-2: PERCENTAGE SHARE OF ELECTRICITY TRANSACTED BY TRADING LICENSEES, SEPTEMBER 2024**

Sr. No	Name of the Trading Licensee	% Share in total Volume traded by Trading Licensees
1	PTC India Ltd.	30.26
2	NTPC Vidyut Vyapar Nigam Ltd.	17.70
3	Adani Enterprises Ltd.	13.97
4	Tata Power Trading Company (P) Ltd.	9.21
5	Manikaran Power Ltd.	6.37
6	Arunachal Pradesh Power Corporation (P) Ltd	5.14
7	JSW Power Trading Company Ltd	3.40
8	GMR Energy Trading Ltd.	2.81
9	Kundan International Pvt. Ltd.	2.74
10	Ambitious Power Trading Company Ltd.	1.30
11	Instinct Infra & Power Ltd.	1.10
12	Greenko Energies Pvt Ltd	0.77
13	Kreate Energy (I) Pvt. Ltd.	0.76
14	Energyedge Power Trading Pvt. Ltd.	0.50
15	RPG Power Trading Company Ltd.	0.49
16	Statkraft Markets Pvt. Ltd.	0.44
17	Refex Industries Ltd.	0.36
18	Refex Energy Limited	0.35
19	Shree Cement Ltd.	0.32
20	Ideal Energy Solution Pvt. Ltd.	0.30
21	Gita Power & Infrastructure Private Limited	0.28
22	Saranyu Power Trading Private Limited	0.28
23	NLC India Ltd.	0.26
24	Instant Ventures Pvt. Ltd.	0.20
25	Abja Power Private Limited	0.16
26	NEFA Power Trading Pvt. Ltd.	0.12
27	Adarsh Stainless Pvt. Ltd.	0.09
28	SJVN Ltd.	0.07
29	Powerfull Energy Trading Pvt. Ltd.	0.07
30	Elsa Consultancy	0.06
31	Customized Energy Solutions India (P) Ltd.	0.03
32	REL Power Trading LLP	0.03
33	Phillip Commodities India (P) Ltd.	0.03
34	Shubheksha Advisors Pvt. Ltd.	0.02
35	Shell Energy Marketing and Trading India Pvt. Ltd.	0.005
36	Altilium Energie Private Limited	0.003
37	Renesys Solar Pvt. Ltd.	0.001
38	Saini Power Transactor	0.001
<b>TOTAL</b>		<b>100.00%</b>
<b>Top 5 trading licensees</b>		<b>77.52%</b>
<b>Herfindahl-Hirschman Index (HHI)</b>		<b>0.1609</b>

Note 1: Volume of electricity transacted by the trading licensees includes bilateral transactions (inter-state & intra-state) and the transactions undertaken through power exchanges.

Source: Information submitted by trading licensees

**Figure 5: Percentage Share of Electricity Transacted by Trading Licensees, September 2024**

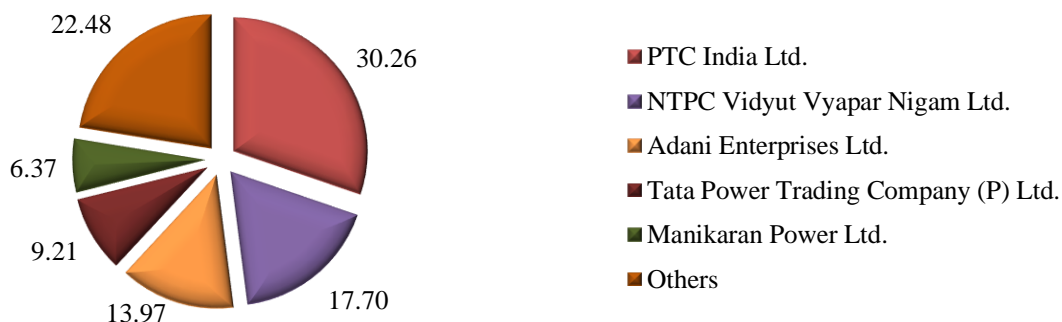


Table-3: PRICE OF ELECTRICITY TRANSACTED THROUGH TRADERS, SEPTEMBER 2024		
Sr.No	Item	Sale Price of Traders (₹/kWh)
1	Minimum	1.68
2	Maximum	10.00
3	Weighted Average	6.70

Source: Information submitted by trading licensees

Table-4: PRICE OF ELECTRICITY TRANSACTED THROUGH TRADERS (TIME-WISE), SEPTEMBER 2024		
Sr.No	Period of Trade	Sale Price of Traders (₹/kWh)
1	RTC	6.79
2	PEAK	9.50
3	OFF PEAK	5.85

Source: Information submitted by trading licensees

Table-5: PRICE OF ELECTRICITY TRANSACTED IN DAY AHEAD MARKET, SEPTEMBER 2024				
Sr.No	ACP	Price in IEX (₹/kWh)	Price in PXIL (₹/kWh)	Price in HPX (₹/kWh)
1	Minimum	0.40	-	10.00
2	Maximum	10.00	-	10.00
3	Weighted Average	4.28	-	10.00

Source: IEX, PXIL and HPX

Table-6: PRICE OF ELECTRICITY TRANSACTED IN GREEN DAY AHEAD MARKET, SEPTEMBER 2024				
Sr.No	ACP	Price in IEX (₹/kWh)	Price in PXIL (₹/kWh)	Price in HPX (₹/kWh)
1	Minimum	1.00	-	-
2	Maximum	10.00	-	-
3	Weighted Average	3.81	-	-

Source: IEX, PXIL and HPX

Table-7: PRICE OF ELECTRICITY TRANSACTED IN HIGH PRICE DAY AHEAD MARKET, SEPTEMBER 2024				
Sr.No	ACP	Price in IEX (₹/kWh)	Price in PXIL (₹/kWh)	Price in HPX (₹/kWh)
1	Minimum	-	-	-
2	Maximum	-	-	-
3	Weighted Average	-	-	-

Source: IEX, PXIL and HPX

Table-8: PRICE OF ELECTRICITY TRANSACTED IN REAL TIME MARKET, SEPTEMBER 2024				
Sr.No	ACP	Price in IEX (₹/kWh)	Price in PXIL (₹/kWh)	Price in HPX (₹/kWh)
1	Minimum	0.14	1.88	-
2	Maximum	10.00	10.00	-
3	Weighted Average	3.67	9.26	-

Source: IEX, PXIL and HPX

Table-9: VOLUME AND PRICE OF ELECTRICITY IN TERM AHEAD MARKET OF IEX, SEPTEMBER 2024			
Sr.No	Term ahead contracts	Actual Scheduled Volume (MU)	Weighted Average Price (₹/kWh)
1	Intra-Day Contracts	8.93	9.36
2	Day Ahead Contingency Contracts	110.80	7.41
3	Daily Contracts	263.28	7.19
4	Monthly Contracts	120.97	6.17
5	Any Day Single Sided Contracts	582.18	6.16
	<b>Total</b>	<b>1086.17</b>	<b>6.56</b>

Source: IEX

**Table-10: VOLUME AND PRICE OF ELECTRICITY IN TERM AHEAD MARKET OF PXIL, SEPTEMBER 2024**

Sr.No	Term ahead contracts	Actual Scheduled Volume (MU)	Weighted Average Price (₹/kWh)
1	Intra-Day Contracts	36.25	9.46
2	Day Ahead Contingency Contracts	319.81	7.33
3	Daily Contracts	103.21	8.03
4	Any Day Single Sided Contracts	235.96	6.60
	<b>Total</b>	<b>695.24</b>	<b>7.30</b>

Source: PXIL

**Table-11: VOLUME AND PRICE OF ELECTRICITY IN TERM AHEAD MARKET OF HPX, SEPTEMBER 2024**

Sr.No	Term ahead contracts	Actual Scheduled Volume (MU)	Weighted Average Price (₹/kWh)
1	Intra-Day Contracts	21.19	9.21
2	Day Ahead Contingency Contracts	134.77	7.50
3	Daily Contracts	99.48	10.00
4	Monthly Contracts	70.44	5.40
5	Any Day Single Sided Contracts	236.18	7.00
	<b>Total</b>	<b>562.06</b>	<b>7.53</b>

Source: HPX

**Table-12: VOLUME AND PRICE OF ELECTRICITY IN GREEN TAM OF IEX, SEPTEMBER 2024**

Sr. No	Green Term ahead contracts	Actual Scheduled Volume (MU)	Weighted Average Price (₹/kWh)
1	Day Ahead Contingency Contracts	1.88	10.00
2	Daily Contracts	2.02	5.70
3	Monthly Contracts	3.60	5.60
4	Any Day Single Sided Contracts	2.88	5.10
	<b>Total</b>	<b>10.38</b>	<b>6.28</b>

Source: IEX

**Table-13: VOLUME AND PRICE OF ELECTRICITY IN GREEN TAM OF PXIL, SEPTEMBER 2024**

Sr. No	Green Term ahead contracts	Actual Scheduled Volume (MU)	Weighted Average Price (₹/kWh)
1	Day Ahead Contingency Contracts	8.27	4.50
2	Daily Contracts	8.64	5.00
3	Any Day Single Sided Contracts	0.44	3.00
	<b>Total</b>	<b>17.36</b>	<b>4.71</b>

Source: PXIL

**Table-14: VOLUME AND PRICE OF ELECTRICITY IN GREEN TAM OF HPX, SEPTEMBER 2024**

Sr. No	Green Term ahead contracts	Actual Scheduled Volume (MU)	Weighted Average Price (₹/kWh)
1	Day Ahead Contingency Contracts	47.96	3.79
2	Daily Contracts	12.00	3.34
3	Any Day Single Sided Contracts	17.36	5.31
	<b>Total</b>	<b>77.32</b>	<b>4.06</b>

Source: HPX

**Table-15: VOLUME AND PRICE OF ELECTRICITY IN HIGH PRICE TAM OF IEX, SEPTEMBER 2024**

Sr. No	High Price Term ahead contracts	Actual Scheduled Volume (MU)	Weighted Average Price (₹/kWh)
1	No Trade	0.00	-
	<b>Total</b>	<b>0.00</b>	<b>-</b>

Source: IEX

**Table-16: VOLUME AND PRICE OF ELECTRICITY IN HIGH PRICE TAM OF PXIL, SEPTEMBER 2024**

Sr. No	High Price Term ahead contracts	Actual Scheduled Volume (MU)	Weighted Average Price (₹/kWh)
1	Intra-Day Contracts	0.94	14.57
	<b>Total</b>	<b>0.94</b>	<b>14.57</b>

Source: PXIL

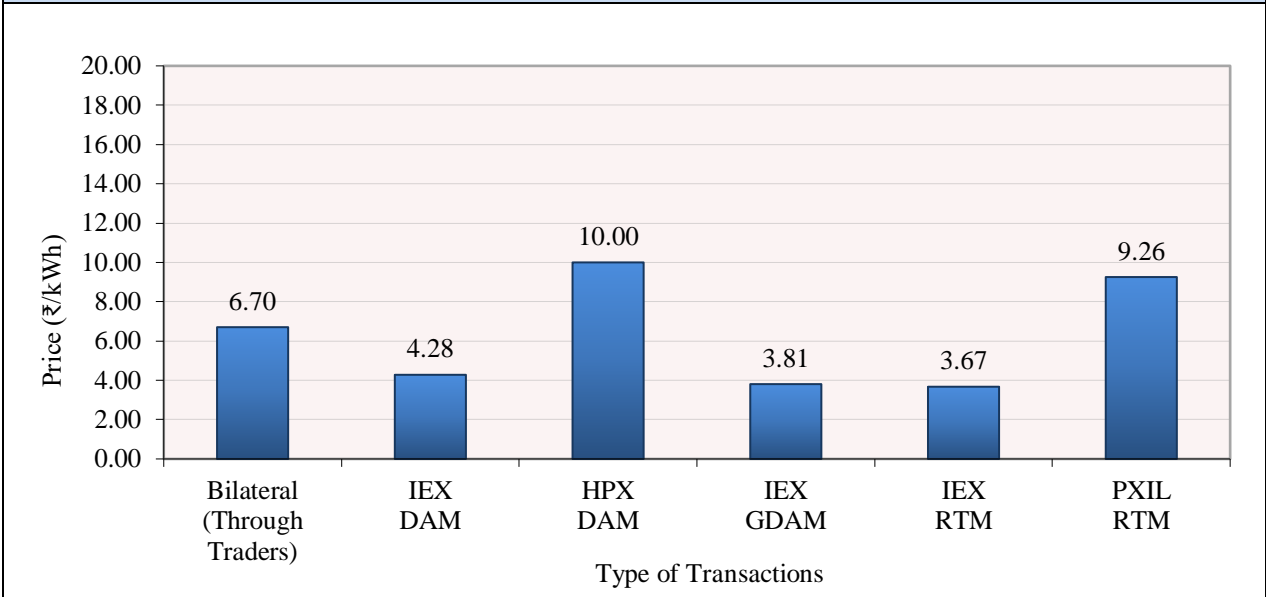
**Table-17: VOLUME AND PRICE OF ELECTRICITY IN HIGH PRICE TAM OF HPX, SEPTEMBER 2024**

Sr. No	High Price Term ahead contracts	Actual Scheduled Volume (MU)	Weighted Average Price (₹/kWh)
1	No Trade	0.00	-
	<b>Total</b>	<b>0.00</b>	<b>-</b>

Source: HPX

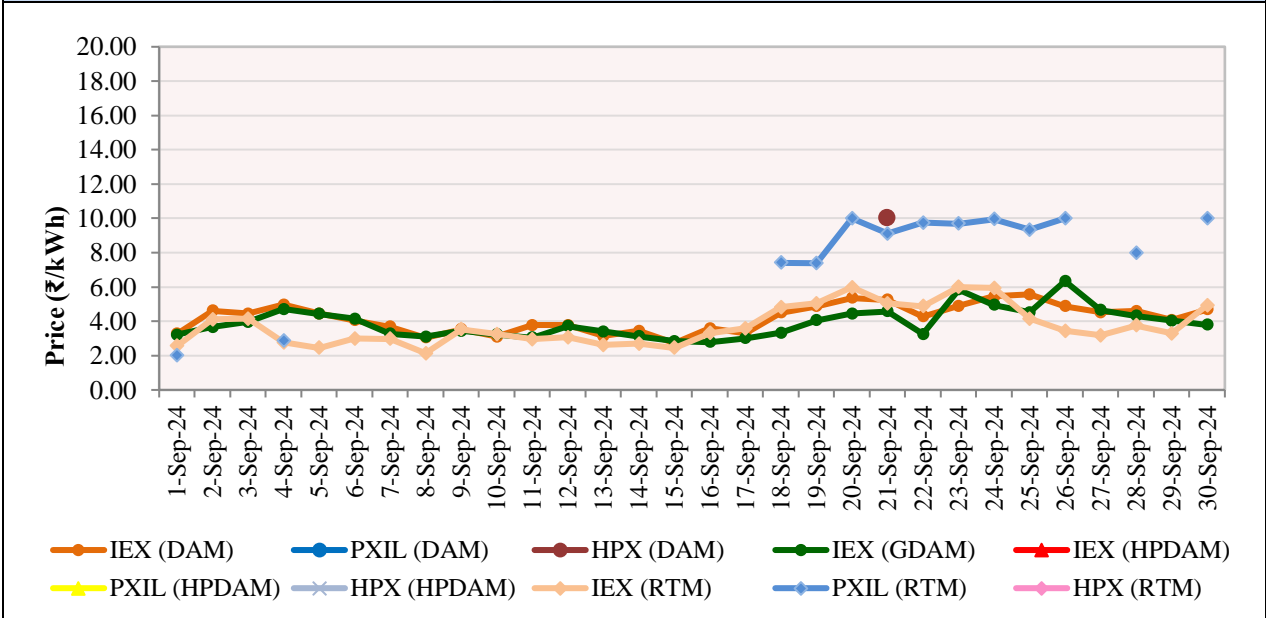


**Figure-6: Weighted Average Price of Short-term Transactions of Electricity, September 2024**



*Note: No electricity was transacted in DAM of PXIL, G-DAM of PXIL & HPX, HP-DAM of all power exchanges and in RTM of HPX during September 2024*

**Figure-7: Weighted Average Price of Short-term Transactions of Electricity, September 2024 (Day-wise)**



*Note: No electricity was transacted in DAM of PXIL, G-DAM of PXIL & HPX, HP-DAM of all power exchanges and in RTM of HPX during September 2024*

**Table-18: VOLUME OF ELECTRICITY SOLD THROUGH BILATERAL, SEPTEMBER 2024**

Name of the Entity	Volume of Sale (MU)	% of Volume
Madhya Pradesh	590.46	10.94
Karnataka	500.13	9.27
Jindal Power Limited, Stage-2	344.51	6.38
Adani Power Limited-Raipur TPP	256.87	4.76
MAHAN ENERGEN LIMITED U#2	252.23	4.67
COASTAL ENERGEN PRIVATE LIMITED	233.22	4.32
Maharashtra	223.92	4.15
Uttar Pradesh	173.12	3.21
Telangana	167.62	3.11
Jindal India Thermal Power Limited	164.21	3.04
MAHAN ENERGEN LIMITED U#1	161.08	2.98
Adani Power Limited - Raigarh TPP	151.30	2.80
DHARIWAL STU MH	150.37	2.79
Jaypee Nigrie Super Thermal Power Plant	139.79	2.59
IGSTPS JHAJJAR	126.58	2.35
SEMBCORP ENERGY INDIA LIMITED	120.64	2.24
IND BARATH ENERGY UTKAL LIMITED	114.06	2.11
KAMENG HYDRO POWER STATION	113.87	2.11
Jhabua Power Limited	100.97	1.87
D B Power Limited	81.09	1.50
Odisha	77.39	1.43
Haryana	77.29	1.43
SIMHAPURI ENERGY LIMITED	76.99	1.43
Damodar Valley Corporation	69.64	1.29
Rajasthan	61.24	1.13
Tamil Nadu	56.31	1.04
HIMACHAL PRADESH	53.48	0.99
ADANI RENEWABLE ENERGY HOLDING FOUR LIMITED	52.51	0.97
Jammu Kashmir	51.35	0.95
SEIL ENERGY INDIA LIMITED	48.21	0.89
Kerala	46.48	0.86
Sorang HEP (Himachal Sorang Power Pvt. Ltd.)	46.39	0.86
Uttarakhand	43.07	0.80
SKS Power Generation Chhattisgarh Limited	38.39	0.71
NEA Likhu-2 Hydropower Project	35.48	0.66
West Bengal	31.61	0.59
ACB (INDIA) LIMITED	26.52	0.49
Serentica Renewables India 1 Private Limited	23.03	0.43
Jindal Power Limited, Stage-1	17.58	0.33
TPSL Banderwala SECI 100_INF	17.10	0.32
Gujarat	16.16	0.30
SEIL Energy India Limited Project II	15.73	0.29
Punjab	13.90	0.26
OSTRO KANNADA POWER PRIVATE LIMITED	13.83	0.26
Sembcorp Energy India Limited Project II	13.57	0.25
Andhra Pradesh	13.44	0.25
NEA - Bihar STU	13.31	0.25
AD HYDRO POWER LIMITED	13.07	0.24
KARCHAM WANGTOO HYDRO ELECTRIC PLANT.	12.53	0.23
Ramagundam Floating solar	12.25	0.23
Singoli Bhatwari HEP	11.87	0.22
Chhattisgarh	11.62	0.22
Adani Green Energy Twenty Five B Limited_infirm	11.21	0.21
Sikkim	10.69	0.20
IRCON RENEWABLE POWER LIMITED Infirm	9.52	0.18

ADANI RENEWABLE ENERGY FORTY ONE LIMITED_infirm	9.12	0.17
TPSL 200MW TPTCL Banderwala	8.81	0.16
MAYA KHOLA HYDRO POWER PROJECT	8.14	0.15
Modi Khola Hydropower Project	8.11	0.15
R.K.M POWERGEN PRIVATE LIMITED	6.76	0.13
Dudhkunda Khola Hydropower Project	6.56	0.12
ADANI WIND ENERGY KUTCHH FOUR Ltd. Nakhatrana	6.16	0.11
MEENAKSHI ENERGY LIMITED	4.94	0.09
DGEN MEGA POWER PROJECT	3.68	0.07
Meghalaya	3.64	0.07
Delhi	3.44	0.06
TANAKPUR POWER STATION	3.34	0.06
ReNew Surya Ravi Private Limited	2.99	0.06
Arunachal Pradesh	2.96	0.05
NEA Nepal Solu Khola (Dudhkoshi) Hydropower Project	2.08	0.04
GMR Warora Energy Limited	1.81	0.03
NTPC SOLAPUR SOLAR PV Station	1.34	0.02
WIND FIVE RENERGY LIMITED	1.10	0.02
Jharkhand	0.95	0.02
Ayana Renewable Power Three Private Limited Infirm	0.84	0.02
Bihar	0.76	0.01
SHREE CEMENT LIMITED TPS	0.64	0.01
Kawas	0.41	0.01
Goa WR	0.13	0.002
ADANI SOLAR ENERGY JODHPUR TWO LIMITED	0.04	0.001
<b>Total</b>	<b>5397.56</b>	<b>100.00</b>
<b>Volume Sold by top 5 Regional Entities</b>	<b>1944.20</b>	<b>36.02</b>
<b>Herfindahl-Hirschman Index</b>		<b>0.0431</b>

Source: NLDC

**Table-19: VOLUME OF ELECTRICITY PURCHASED THROUGH BILATERAL, SEPTEMBER 2024**

Name of the Entity	Volume of Purchase (MU)	% of Volume
Gujarat	1120.67	20.76
Uttar Pradesh	692.03	12.82
Punjab	493.86	9.15
Maharashtra	489.31	9.07
Delhi	471.26	8.73
Andhra Pradesh	410.55	7.61
Tamil Nadu	383.03	7.10
West Bengal	252.01	4.67
Uttarakhand	184.34	3.42
Odisha	138.72	2.57
Chhattisgarh	126.56	2.34
COASTAL ENERGEN PRIVATE LIMITED	100.80	1.87
Haryana	67.30	1.25
Jharkhand	57.61	1.07
Rajasthan	57.02	1.06
Madhya Pradesh	48.07	0.89
Jammu Kashmir	45.32	0.84
Kerala	43.04	0.80
Bihar	42.18	0.78
ArcelorMittal Nippon Steel India Limited	37.67	0.70
BHARAT ALUMINIUM COMPANY LTD (Bulk Consumer)	33.32	0.62
Adani Power Limited - Raigarh TPP	25.05	0.46
IND BARATH ENERGY UTKAL LIMITED	16.17	0.30
Goa WR	15.71	0.29
Karnataka	13.16	0.24
Assam	13.07	0.24
Adani Power Limited-Raipur TPP	8.95	0.17
NEA - UP STU	3.34	0.06
Meghalaya	2.07	0.04
MAHAN ENERGEN LIMITED U#1	1.85	0.03
IL&FS TAMIL NADU POWER COMPANY LIMITED	1.24	0.02
Telangana	0.79	0.01
MAHAN ENERGEN LIMITED U#2	0.61	0.01
Jindal Power Limited, Stage-2	0.60	0.01
Daman and Diu - Dadra and Nagar Haveli	0.15	0.003
Goa SR	0.13	0.002
<b>TOTAL</b>	<b>5397.56</b>	<b>100.00</b>
<b>Volume Purchased by top 5 Regional Entities</b>	<b>3267.12</b>	<b>60.53</b>
<b>Herfindahl-Hirschman Index</b>		<b>0.1003</b>

Source: NLDC

**Table-20: VOLUME OF ELECTRICITY SOLD IN DAY AHEAD MARKET THROUGH POWER EXCHANGES, SEPTEMBER 2024**

<b>Name of the Entity</b>	<b>Volume of Sale (MU)</b>	<b>% of Volume</b>
Uttar Pradesh	409.81	8.98
NEPAL ELECTRICITY AUTHORITY MUZAFFARPUR	264.80	5.80
Odisha	241.25	5.29
Haryana	212.08	4.65
Jindal India Thermal Power Limited	201.94	4.43
Jindal Power Limited, Stage-2	195.69	4.29
Madhya Pradesh	193.57	4.24
West Bengal	130.21	2.85
Adani Power Limited-Raipur TPP	126.76	2.78
Delhi	122.24	2.68
Adani Power Limited - Raigarh TPP	105.59	2.31
MAHAN ENERGEN LIMITED U#1	104.09	2.28
Jindal Steel & Power Ltd , DCP	96.36	2.11
Karnataka	95.07	2.08
Jindal Power Limited, Stage-1	94.73	2.08
D B Power Limited	87.46	1.92
KARCHAM WANGTOO HYDRO ELECTRIC PLANT	81.04	1.78
Assam	67.99	1.49
ADANI RENEWABLE ENERGY HOLDING FOUR LIMITED	61.76	1.35
MAHAN ENERGEN LIMITED U#2	57.71	1.26
AD HYDRO POWER LIMITED	56.87	1.25
Telangana	53.88	1.18
Andhra Pradesh	48.50	1.06
SHREE CEMENT LIMITED TPS	47.95	1.05
SEIL ENERGY INDIA LIMITED	44.82	0.98
Adani Green Energy Twenty Five B Limited_infirm	44.25	0.97
ACB (INDIA) LIMITED	43.70	0.96
RENEW SURYA PRATAP PRIVATE LIMITED	40.69	0.89
Jaypee Nigrie Super Thermal Power Plant	37.87	0.83
Bihar	35.82	0.79
NEPAL ELECTRICITY AUTHORITY TANAKPUR	33.65	0.74
Gujarat	33.01	0.72
Chhattisgarh	31.68	0.69
ReNew Surya Ravi Private Limited	31.54	0.69
Basochhu Hydropower Plant Bhutan	31.25	0.68
NABINAGAR POWER GENERATING COMPANY LIMITED	31.12	0.68
Sainj HEP	30.30	0.66
Himachal Pradesh	28.74	0.63
Chandigarh (UT)	27.57	0.60
Maharashtra	27.31	0.60
Adept Renewable Technologies Private Limited	26.82	0.59
Tamil Nadu	25.75	0.56
Punjab	24.78	0.54
SIMHAPURI ENERGY LIMITED	23.98	0.53
Amp Energy Green Six Private Limited	23.35	0.51
NTPC Farakka stage I	22.67	0.50
NTPC North Karanpura STPS	22.41	0.49
Government of Himachal Pradesh_NJHPS	22.22	0.49
Government of Himachal Pradesh_RampurHEP	21.57	0.47
KANTI BIJLEE UTPADAN NIGAM LIMITED	21.55	0.47
Damodar Valley Corporation	21.00	0.46
Mizoram	20.80	0.46
RENEW SURYA OJAS PRIVATE LIMITED-Wind	20.79	0.46
IND BARATH ENERGY UTKAL LIMITED	20.23	0.44

Government of Himachal Pradesh _ Chamera1HEP	18.41	0.40
ADANI SOLAR ENERGY JAISALMER TWO PVT. LTD. (Project-2)	17.95	0.39
ADANI SOLAR ENERGY RJ TWO PRIVATE LIMITED	17.78	0.39
Nikachhu Hydropower Project	17.45	0.38
NTPC Talcher Super Thermal Power Station Stage II	17.20	0.38
DGEN MEGA POWER PROJECT	16.48	0.36
ADANI WIND ENERGY KUTCHH FOUR Ltd. Nakhatrana	16.17	0.35
Uttarakhand	16.01	0.35
Singoli Bhatwari HEP	15.76	0.35
ADANI RENEWABLE ENERGY FORTY ONE LIMITED_infirm	15.19	0.33
Government of Himachal Pradesh_ CHAMERA2HEP	14.61	0.32
Palatana Plant	14.48	0.32
Rajasthan	14.18	0.31
Government of Himachal Pradesh_Koldam HEP	13.45	0.29
Maruti Clean Coal and Power Limited	13.44	0.29
Government of Himachal Pradesh _ Chamera3HEP	12.28	0.27
ADANI GREEN ENERGY TWENTY FIVE LIMITED_infirm	12.00	0.26
ADANI RENEWABLE ENERGY FIFTY FIVE LIMITED_PSS3_infirm (162.5 MW Hybrid Solar of 187.5MW HPD)	10.33	0.23
NTPC BARH Stage II	10.31	0.23
IGSTPS JHAJJAR	10.20	0.22
Adani Green Energy Twenty Six B Limited_infirm	10.16	0.22
Government of Himachal Pradesh_Parbat3HEP	10.01	0.22
SKS Power Generation Chhattisgarh Limited	9.89	0.22
Sikkim	8.68	0.19
Jhabua Power Limited	8.35	0.18
SEIL Energy India Limited Project II	7.99	0.18
Adani Green Energy Twenty Five A Limited_Infirm	7.94	0.17
GMR Warora Energy Limited	7.55	0.17
NTPC Talcher Stage I	6.65	0.15
ADANI SOLAR ENERGY JODHPUR TWO LIMITED	6.29	0.14
NTPC Unchahar Stage IV	6.23	0.14
Jammu Kashmir	6.11	0.13
Onewolt Energy Private Limited	5.87	0.13
Government of Himachal Pradesh_Bairasuil HEP	5.72	0.13
Bongaigaon Thermal Power Station NTPC	5.67	0.12
NTPC BARH Stage I	5.51	0.12
OSTRO KANNADA POWER PRIVATE LIMITED	5.03	0.11
NTPP BRBCL	4.97	0.11
NTPC Farakka stage III	4.76	0.10
NTPC Unchahar Stage I	4.71	0.10
Budhil HEP (Greenko Budhil Hydro Power Pvt. Ltd.)	4.42	0.10
IL&FS TAMIL NADU POWER COMPANY LIMITED	4.23	0.09
NTPC Dadri Stage II	4.18	0.09
NTPC Unchahar Stage II	4.08	0.09
NTPC Simhadri Stage II	3.80	0.08
NTPC Dadri Stage I	3.58	0.08
JUNIPER GREEN COSMIC PRIVATE LIMITED_INFIRM	3.50	0.08
Goa WR	3.40	0.07
R.K.M POWERGEN PRIVATE LIMITED	3.34	0.07
WIND FIVE RENERGY LIMITED	3.33	0.07
Tripura	3.32	0.07
NTPC Lara Stage I	3.29	0.07
VENA ENERGY VIDYUTH PRIVATE LIMITED_INFIRM	3.18	0.07
NTPC Kahalgaon stage I	2.84	0.06
Kerala	2.55	0.06
NTPC Sipat Stage I	2.54	0.06
Nagaland	2.49	0.05

Transition Energy Services Private Limited	2.41	0.05
MB POWER (MADHYA PRADESH) LIMITED	2.37	0.05
NTPC Korba Stage I &II	2.35	0.05
NTPC Telangana	2.15	0.05
TPSL 200MW TPTCL Banderwala	2.10	0.05
NTPC Gadarwara	2.02	0.04
NTPC Solapur	1.97	0.04
NTPC Kahalgaon stage II	1.91	0.04
NTPC Tanda Stage II	1.84	0.04
ADANI WIND ENERGY KUTCHH FOUR Ltd. Nakhatrana (infirm)	1.83	0.04
GMR KAMALANGA ENERGY LTD-CTU	1.71	0.04
NTPC Singrauli	1.58	0.03
ADANI SOLAR ENERGY RJ TWO PRIVATE LIMITED (infirm)	1.45	0.03
Ramagundam Floating solar	1.44	0.03
Meghalaya	1.30	0.03
NTPC KUDGI	1.29	0.03
NTPC Korba Stage III	1.20	0.03
DHARIWAL STU OTH	1.11	0.02
RENEW SURYA OJAS PRIVATE LIMITED_INFIRM	1.07	0.02
NTPC Sipat Stage II	1.04	0.02
Pondicherry UT	0.80	0.02
NTPC Rihand stage II	0.74	0.02
BHARAT ALUMINIUM COMPANY LTD	0.67	0.01
Dhariwal ISTS	0.66	0.01
NTPC Ramagundam Stage I &II	0.59	0.01
NTPC Rihand stage I	0.56	0.01
NTPC khargone	0.55	0.01
NTPC Rihand stage III	0.51	0.01
COASTAL ENERGEN PRIVATE LIMITED	0.49	0.01
NTPC Ramagundam Stage III	0.44	0.01
NLC Tamilnadu Power Limited	0.42	0.01
TPSL Banderwala SECI 100_INF	0.38	0.01
Simhadri FSP 15 MW	0.35	0.01
NTPC Darlipali	0.32	0.01
NTPC Unchahar Stage III	0.27	0.01
NLC INDIA LIMITED NEYVELI NEW TPS	0.26	0.01
Simhadri Floating solar (10 MW)	0.21	0.00
ADANI GREEN ENERGY TWENTY SIX A LIMITED_infirm	0.20	0.00
NTPC Mouda Stage I	0.20	0.004
NTPC Vindhyachal Stage I	0.19	0.004
NLC INDIA LIMITED THERMAL POWER STATION I EXPANSION	0.18	0.004
NTPC Mouda Stage II	0.17	0.004
Serentica Renewables India 4 Private Limited	0.12	0.003
NLC INDIA LIMITED THERMAL POWER STATION II STAGE II	0.06	0.001
Grian Energy Private Limited	0.05	0.001
Nani Virani Wind Energy Private Limited	0.03	0.001
NTPC Vindhyachal Stage IV	0.03	0.001
NLC INDIA LIMITED THERMAL POWER STATION II EXPANSION	0.03	0.001
Amplus Ages Private Limited	0.02	0.001
NLC INDIA LIMITED THERMAL POWER STATION II STAGE I	0.02	0.0005
NTPC Vindhyachal Stage II	0.02	0.0005
NTPC Vindhyachal Stage V	0.02	0.0003
NTPC Vindhyachal Stage III	0.01	0.0002
<b>Total</b>	<b>4562.18</b>	<b>100.00</b>
<b>Volume sold by top 5 Regional Entities</b>	<b>1329.89</b>	<b>29.15</b>
<b>Herfindahl-Hirschman Index</b>		<b>0.0300</b>

Source: NLDC

**Table-21: VOLUME OF ELECTRICITY PURCHASED IN DAY AHEAD MARKET THROUGH POWER EXCHANGES, SEPTEMBER 2024**

<b>Name of the Entity</b>	<b>Volume of Purchase (MU)</b>	<b>% of Volume</b>
Gujarat	894.55	19.61
Telangana	798.06	17.49
Rajasthan	483.72	10.60
Daman and Diu - Dadra and Nagar Haveli	317.20	6.95
West Bengal	258.63	5.67
Maharashtra	244.38	5.36
Karnataka	244.02	5.35
Uttar Pradesh	231.44	5.07
Andhra Pradesh	199.07	4.36
Tamil Nadu	178.26	3.91
BHARAT ALUMINIUM COMPANY LTD (Bulk Consumer)	114.19	2.50
Chhattisgarh	105.60	2.31
Kerala	100.10	2.19
Haryana	70.77	1.55
Uttarakhand	58.81	1.29
Delhi	48.33	1.06
Punjab	36.86	0.81
Odisha	35.53	0.78
Jammu Kashmir	32.61	0.71
Madhya Pradesh	27.44	0.60
North Central Railway Prayagraj	22.15	0.49
ArcelorMittal Nippon Steel India Limited	19.71	0.43
MB POWER (MADHYA PRADESH) LIMITED	9.42	0.21
Bihar	8.24	0.18
Chandigarh (UT)	5.36	0.12
Damodar Valley Corporation	3.51	0.08
Sikkim	3.33	0.07
Goa WR	3.27	0.07
Jharkhand	3.17	0.07
Himachal Pradesh	2.63	0.06
Goa SR	0.97	0.02
Meghalaya	0.82	0.02
Pondicherry UT	0.05	0.001
<b>TOTAL</b>	<b>4562.18</b>	<b>100.00</b>
<b>Volume purchased by top 5 Regional Entities</b>	<b>2752.16</b>	<b>60.33</b>
<b>Herfindahl-Hirschman Index</b>		<b>0.1025</b>

Source: NLDC



**Table-22: VOLUME OF ELECTRICITY SOLD IN GREEN DAY AHEAD MARKET THROUGH POWER EXCHANGES, SEPTEMBER 2024**

Name of the Entity	Volume of Sale (MU)	% of Volume
ADANI RENEWABLE ENERGY HOLDING FOUR LIMITED	67.16	9.36
Himachal Pradesh	57.45	8.00
RENEW SURYA OJAS PRIVATE LIMITED-Wind	54.55	7.60
Adani Green Energy Twenty Five B Limited_infirm	44.97	6.26
Karnataka	40.68	5.67
ADANI RENEWABLE ENERGY FORTY ONE LIMITED_infirm	37.48	5.22
Andhra Pradesh	36.00	5.01
Singoli Bhatwari HEP	35.44	4.94
Maharashtra	23.80	3.32
ADANI WIND ENERGY KUTCHH FOUR Ltd. Nakhatrana	23.36	3.25
ADANI SOLAR ENERGY RJ TWO PRIVATE LIMITED	22.61	3.15
Madhya Pradesh	21.23	2.96
Transition Green Energy Private Limited	19.64	2.74
Uttarakhand	19.35	2.69
TPSL 200MW TPTCL Banderwala	16.07	2.24
Meghalaya	15.09	2.10
Jammu Kashmir	13.33	1.86
OSTRO KANNADA POWER PRIVATE LIMITED	12.98	1.81
Adani Green Energy Twenty Six B Limited_infirm	12.00	1.67
Uttar Pradesh	11.15	1.55
ADANI RENEWABLE ENERGY FIFTY FIVE LIMITED_PSS3_infirm (162.5 MW Hybrid Solar of 187.5MW HPD)	11.06	1.54
Ayana Renewable Power Three Private Limited Infirm	10.42	1.45
West Bengal	10.41	1.45
Transition Energy Services Private Limited	10.08	1.40
Grian Energy Private Limited	9.43	1.31
Adani Green Energy Twenty Five A Limited_Infirm	9.03	1.26
ADANI GREEN ENERGY TWENTY FIVE LIMITED_infirm	8.28	1.15
ReNew Surya Ravi Private Limited	7.87	1.10
ADANI SOLAR ENERGY JAISALMER TWO PRIVATE LIMITED(Project-2)	6.78	0.94
Rajasthan	6.35	0.89
Amplus Ages Private Limited	5.36	0.75
JSW RENEW ENERGY LIMITED INFIRM	5.14	0.72
WIND FIVE RENERGY LIMITED	4.87	0.68
ADANI WIND ENERGY KUTCHH FOUR Ltd. Nakhatrana (infirm)	4.26	0.59
RENEW SURYA OJAS PRIVATE LIMITED_INFIRM	2.76	0.38
Ramagundam Floating solar	2.66	0.37
Delhi	2.53	0.35
ADANI SOLAR ENERGY JODHPUR TWO LIMITED	2.48	0.34
CONTINUUM POWER TRADING (TN) PRIVATE LIMITED	2.40	0.33
TPSL Banderwala SECI 100_INF	2.09	0.29
ADANI SOLAR ENERGY RJ TWO PRIVATE LIMITED (infirm)	1.83	0.26
Chhattisgarh	1.81	0.25
Sorang HEP (Himachal Sorang Power Pvt. Ltd.)	1.01	0.14
Simhadri FSP 15 MW	0.93	0.13
JUNIPER GREEN COSMIC PRIVATE LIMITED_INFIRM	0.81	0.11

SEMBCORP GREEN INFRA PRIVATE LIMITED (INFIRM)	0.71	0.10
Nani Virani Wind Energy Private Limited	0.51	0.07
VENA ENERGY VIDYUTH PRIVATE LIMITED_SOLAR_INFIRM	0.47	0.07
Simhadri Floating solar (10 MW)	0.47	0.07
VENA ENERGY VIDYUTH PRIVATE LIMITED_INFIRM	0.36	0.05
ADANI GREEN ENERGY TWENTY SIX A LIMITED_infirm	0.26	0.04
Serentica Renewables India 4 Private Limited	0.11	0.01
Serentica Renewables India 1 Private Limited	0.03	0.004
<b>Total</b>	<b>717.89</b>	<b>100.00</b>
<b>Volume sold by top 5 Regional Entities</b>	<b>264.81</b>	<b>36.89</b>
<b>Herfindahl-Hirschman Index</b>		<b>0.0453</b>

Source: NLDC

**Table-23: VOLUME OF ELECTRICITY PURCHASED IN GREEN DAY AHEAD MARKET THROUGH POWER EXCHANGES, SEPTEMBER 2024**

<b>Name of the Entity</b>	<b>Volume of Purchase (MU)</b>	<b>% of Volume</b>
ArcelorMittal Nippon Steel India Limited	120.21	16.74
Maharashtra	95.20	13.26
Damodar Valley Corporation	88.15	12.28
Jharkhand	70.72	9.85
Odisha	58.43	8.14
Gujarat	44.50	6.20
Tamil Nadu	31.48	4.38
Chhattisgarh	28.12	3.92
Haryana	27.63	3.85
Punjab	26.33	3.67
Karnataka	19.61	2.73
Goa WR	15.67	2.18
North Central Railway Prayagraj	14.49	2.02
Kerala	13.94	1.94
Andhra Pradesh	10.25	1.43
Delhi	10.14	1.41
Uttar Pradesh	9.94	1.38
BHARAT ALUMINIUM COMPANY LTD (Bulk Consumer)	9.92	1.38
Goa SR	6.55	0.91
Telangana	4.92	0.69
Madhya Pradesh	4.47	0.62
Bihar	3.87	0.54
Jhabua Power Limited	2.32	0.32
Daman and Diu - Dadra and Nagar Haveli	1.04	0.15
<b>TOTAL</b>	<b>717.89</b>	<b>100.00</b>
<b>Volume purchased by top 5 Regional Entities</b>	<b>432.71</b>	<b>60.27</b>
<b>Herfindahl-Hirschman Index</b>		<b>0.0902</b>

Source: NLDC

**Table-24: VOLUME OF ELECTRICITY SOLD IN HIGH PRICE DAY AHEAD MARKET THROUGH POWER EXCHANGES, SEPTEMBER 2024**

<b>Name of the Entity</b>	<b>Volume of Sale (MU)</b>	<b>% of Volume</b>
No Trade	0.00	-
<b>TOTAL</b>	<b>0.00</b>	<b>0.00</b>
<b>Volume sold by top 5 Regional Entities</b>	<b>0.00</b>	<b>-</b>
<b>Herfindahl-Hirschman Index</b>		<b>-</b>

Source: NLDC

**Table-25: VOLUME OF ELECTRICITY PURCHASED IN HIGH PRICE DAY AHEAD MARKET THROUGH POWER EXCHANGES, SEPTEMBER 2024**

<b>Name of the Entity</b>	<b>Volume of Purchase (MU)</b>	<b>% of Volume</b>
No Trade	0.00	-
<b>TOTAL</b>	<b>0.00</b>	<b>0.00</b>
<b>Volume purchased by top 5 Regional Entities</b>	<b>0.00</b>	<b>-</b>
<b>Herfindahl-Hirschman Index</b>		<b>-</b>

Source: NLDC

**Table-26: VOLUME OF ELECTRICITY SOLD IN REAL TIME MARKET THROUGH POWER EXCHANGES, SEPTEMBER 2024**

Name of the Entity	Volume of Sale (MU)	% of Volume
Madhya Pradesh	425.76	10.83
Bihar	366.72	9.33
Haryana	319.02	8.11
Tamil Nadu	298.19	7.58
Uttar Pradesh	245.46	6.24
Odisha	190.98	4.86
West Bengal	121.86	3.10
Andhra Pradesh	119.18	3.03
Himachal Pradesh	112.70	2.87
Jammu Kashmir	98.91	2.52
Delhi	88.62	2.25
Karnataka	81.57	2.07
Telangana	73.67	1.87
Rajasthan	72.96	1.86
Jharkhand	71.72	1.82
Chhattisgarh	63.98	1.63
Punjab	52.46	1.33
NABINAGAR POWER GENERATING COMPANY LIMITED	33.56	0.85
Assam	33.01	0.84
Uttarakhand	31.27	0.80
NTPC Singrauli	31.12	0.79
SEIL ENERGY INDIA LIMITED	28.77	0.73
MEENAKSHI ENERGY LIMITED	27.68	0.70
NTPC Farakka stage I	26.94	0.69
Sasan Power Limited	26.74	0.68
TRN ENERGY PRIVATE LIMITED	25.40	0.65
Maharashtra	24.67	0.63
NLC Tamilnadu Power Limited	24.51	0.62
RENEW SURYA OJAS PRIVATE LIMITED-Wind	24.47	0.62
Adani Power Limited-Raipur TPP	23.12	0.59
KARCHAM WANGTOO HYDRO ELECTRIC PLANT.	19.74	0.50
Gujarat	19.47	0.50
Arunachal Pradesh	19.22	0.49
ADANI RENEWABLE ENERGY HOLDING FOUR LIMITED	18.44	0.47
Jindal Power Limited, Stage-2	18.40	0.47
NTPC Tanda Stage II	17.06	0.43
Damodar Valley Corporation	16.79	0.43
NTPC Rihand stage III	16.55	0.42
D B Power Limited	15.32	0.39
NTPC Rihand stage II	15.15	0.39
NTPC Kahalgaon stage II	13.78	0.35
ADANI RENEWABLE ENERGY FORTY ONE LIMITED_infirm	13.64	0.35
MAHAN ENERGEN LIMITED U#1	13.43	0.34
NEPAL ELECTRICITY AUTHORITY MUZAFFARPUR	13.30	0.34
Jhabua Power Limited	13.03	0.33
NTPC Sipat Stage I	12.70	0.32
Jindal Steel & Power Ltd , DCP	12.56	0.32
MAITHON POWER LIMITED	11.32	0.29
RENEW SURYA ROSHNI PRIVATE LIMITED Koppal PS	10.61	0.27
MB POWER (MADHYA PRADESH) LIMITED	9.76	0.25
NTPC BARH Stage II	9.63	0.25
AD HYDRO POWER LIMITED	9.56	0.24
NTPC North Karanpura STPS	9.52	0.24

Jindal Power Limited, Stage-1	9.30	0.24
NTPC Talcher Super Thermal Power Station Stage II	9.20	0.23
Sikkim	9.02	0.23
Adani Power Limited - Raigarh TPP	8.79	0.22
Pondicherry UT	8.37	0.21
NTPC Telangana	8.18	0.21
NTPC Korba Stage I &II	8.01	0.20
NTPC Darlipali	7.84	0.20
NTPC Kahalgaon stage I	7.68	0.20
NLC INDIA LIMITED NEYVELI NEW THERMAL POWER STATION	7.63	0.19
NTPC Vindhyachal Stage IV	7.54	0.19
NTPC Gadarwara	7.38	0.19
NEPAL ELECTRICITY AUTHORITY TANAKPUR	7.31	0.19
NREL-Dayapar Wind	6.91	0.18
NTPC Rihand stage I	6.88	0.17
Sorang HEP (Himachal Sorang Power Pvt. Ltd.))	6.79	0.17
NTPC Sipat Stage II	6.75	0.17
MAHAN ENERGEN LIMITED U#2	6.56	0.17
NTPC Farakka stage III	6.31	0.16
Government of Himachal Pradesh_Koldam HEP	5.87	0.15
NTPC Vindhyachal Stage I	5.81	0.15
NTPC Lara Stage I	5.81	0.15
NTPC Vindhyachal Stage III	5.41	0.14
NTPC Vindhyachal Stage II	5.40	0.14
ADANI WIND ENERGY KUTCHH FOUR Ltd. Nakhatrana	5.40	0.14
ReNew Surya Ravi Private Limited	5.37	0.14
Transition Green Energy Private Limited	5.33	0.14
Manipur	5.32	0.14
NTPC KUDGI	5.32	0.14
NTPC Ramagundam Stage I &II	5.32	0.14
SIMHAPURI ENERGY LIMITED	5.31	0.14
KAMENG HYDRO POWER STATION	5.29	0.13
BHARAT ALUMINIUM COMPANY LTD	5.25	0.13
Government of Himachal Pradesh_RampurHEP	5.18	0.13
Government of Himachal Pradesh_NJHPS	5.16	0.13
Government of Himachal Pradesh _ Chamera I HEP	5.15	0.13
NTPC khargone	5.03	0.13
Adani Green Energy Twenty Five B Limited_infirm	4.97	0.13
Chandigarh (UT)	4.79	0.12
NTPC Unchahar Stage IV	4.76	0.12
NLC INDIA LIMITED THERMAL POWER STATION II STAGE II	4.73	0.12
IGSTPS JHAJJAR	4.59	0.12
NTPC Simhadri Stage II	4.47	0.11
Grian Energy Private Limited	4.40	0.11
JUNIPER GREEN COSMIC PRIVATE LIMITED_INFIRM	4.39	0.11
Kerala	4.31	0.11
Bongaigaon Thermal Power Station NTPC	4.21	0.11
SKS Power Generation Chhattisgarh Limited	4.08	0.10
NLC INDIA LIMITED THERMAL POWER STATION II STAGE I	4.01	0.10
NTPC Vindhyachal Stage V	3.91	0.10
Government of Himachal Pradesh_ CHAMERA2HEP	3.86	0.10
Amplus Ages Private Limited	3.78	0.10
NLC INDIA LIMITED THERMAL POWER STATION I EXPANSION	3.77	0.10
VENA ENERGY VIDYUTH PRIVATE LIMITED_INFIRM	3.71	0.09
RENEW SURYA OJAS PRIVATE LIMITED_INFIRM	3.71	0.09
Palatana Plant	3.70	0.09
Onevolt Energy Private Limited	3.65	0.09

Transition Energy Services Private Limited	3.64	0.09
ACB (INDIA) LIMITED	3.49	0.09
ADHUNIK POWER & NATURAL RESOURCES LIMITED	3.47	0.09
Government of Himachal Pradesh _ Chamera3HEP	3.38	0.09
Sainj HEP	3.36	0.09
SEIL Energy India Limited Project II	3.34	0.08
NTPC BARH Stage I	3.18	0.08
OSTRO KANNADA POWER PRIVATE LIMITED	2.95	0.08
IND BARATH ENERGY UTKAL LIMITED	2.91	0.07
NTPP BRBCL	2.88	0.07
Government of Himachal Pradesh _Parbati3HEP	2.76	0.07
NTPC Unchahar Stage I	2.74	0.07
NTPC Korba Stage III	2.71	0.07
NTPC Unchahar Stage II	2.71	0.07
GMR Warora Energy Limited	2.63	0.07
NTPC Mouda Stage I	2.61	0.07
Serentica Renewables India 1 Private Limited	2.45	0.06
NTPC Dadri Stage II	2.40	0.06
Tripura	2.36	0.06
R.K.M POWERGEN PRIVATE LIMITED	2.34	0.06
SHREE CEMENT LIMITED TPS	2.31	0.06
NTPC Dadri Stage I	2.22	0.06
NTECL VALLUR	2.19	0.06
Serentica Renewables India 4 Private Limited	2.12	0.05
ADANI GREEN ENERGY TWENTY FIVE LIMITED_infirm	2.10	0.05
NTPC Solapur	2.05	0.05
ASSAM GAS BASED POWER STATION	1.88	0.05
Meghalaya	1.81	0.05
KANTI BIJLEE UTPADAN NIGAM LIMITED	1.78	0.05
Budhil HEP (Greenko Budhil Hydro Power Pvt. Ltd.)	1.76	0.04
NTPC Simhadri Stage I	1.76	0.04
Government of Himachal Pradesh _BairasuilHEP	1.67	0.04
ADANI SOLAR ENERGY RJ TWO PRIVATE LIMITED	1.57	0.04
Nagaland	1.54	0.04
NTPC Ramagundam Stage III	1.45	0.04
Amp Energy Green Six Private Limited	1.43	0.04
Nikachhu Hydropower Project	1.33	0.03
NTPC Mouda Stage II	1.29	0.03
NLC INDIA LIMITED THERMAL POWER STATION II EXPANSION	1.24	0.03
Basochhu Hydropower Plant Bhutan	1.20	0.03
RENEW SURYA PRATAP PRIVATE LIMITED	1.12	0.03
Tashiding HEP, Shiga Energy Private Limited	1.12	0.03
TPSL Banderwala SECI 100_INF	1.12	0.03
JORETHANG LOOP HEP, DANS ENERGY PRIVATE LIMITED	1.07	0.03
Adept Renewable Technologies Private Limited	1.07	0.03
Singoli Bhatwari HEP	1.02	0.03
SEMBCORP GREEN INFRA PRIVATE LIMITED (INFIRM)	0.94	0.02
IL&FS TAMIL NADU POWER COMPANY LIMITED	0.82	0.02
DGEN MEGA POWER PROJECT	0.77	0.02
Maruti Clean Coal and Power Limited	0.76	0.02
The Tata Power Co Ltd (MTPS)	0.72	0.02
Jaypee Nigrie Super Thermal Power Plant	0.63	0.02
Goa WR	0.61	0.02
ADANI SOLAR ENERGY JAISALMER TWO PRIVATE LIMITED(Project-2)	0.58	0.01
NTPC Talcher Stage I	0.57	0.01
AGARTALA GAS BASED POWER STATION	0.47	0.01

Ayana Renewable Power Three Private Limited Infirm	0.44	0.01
VENA ENERGY VIDYUTH PRIVATE LIMITED_SOLAR_INFIRM	0.37	0.01
Jindal India Thermal Power Limited	0.36	0.01
WIND FIVE RENERGY LIMITED	0.33	0.01
GMR KAMALANGA ENERGY LTD-CTU	0.32	0.01
NTPC Unchahar Stage III	0.30	0.01
RENEW SURYA ROSHNI PRIVATE LIMITED-Fatehgarh-III PS	0.30	0.01
ADANI SOLAR ENERGY JODHPUR TWO LIMITED	0.27	0.01
COASTAL ENERGEN PRIVATE LIMITED	0.26	0.01
Daman and Diu - Dadra and Nagar Haveli	0.25	0.01
ADANI RENEWABLE ENERGY FIFTY FIVE LIMITED_PSS3_infirm (162.5 MW Hybrid Solar of 187.5MW HPD)	0.25	0.01
Serentica Renewables India 1 Private Limited- Koppal (Infirm)	0.14	0.004
DHARIWAL STU OTH	0.12	0.003
CONTINUUM POWER TRADING (TN) PRIVATE LIMITED	0.12	0.003
NTPC SAIL POWER COMPANY LIMITED	0.12	0.003
Nani Virani Wind Energy Private Limited	0.09	0.002
TPSL 200MW TPTCL Banderwala	0.07	0.002
Adani Green Energy Twenty Six B Limited_infirm	0.05	0.001
Chuzachen HEP	0.04	0.001
Dhariwal ISTS	0.04	0.001
Adani Green Energy Twenty Five A Limited_Infirm	0.03	0.001
Goa SR	0.02	0.001
NTPC SOLAPUR SOLAR PV Station	0.01	0.0004
ADANI SOLAR ENERGY RJ TWO PRIVATE LIMITED (infirm)	0.01	0.0002
ADANI GREEN ENERGY TWENTY SIX A LIMITED_infirm	0.001	0.00002
<b>Total</b>	<b>3931.77</b>	<b>100.00</b>
<b>Volume sold by top 5 Regional Entities</b>	<b>1655.16</b>	<b>42.10</b>
<b>Herfindahl-Hirschman Index</b>		<b>0.0459</b>

Source: NLDC



**Table-27: VOLUME OF ELECTRICITY PURCHASED IN REAL TIME MARKET THROUGH POWER EXCHANGES, SEPTEMBER 2024**

Name of the Entity	Volume of Purchase (MU)	% of Volume
Punjab	804.34	20.46
Telangana	520.67	13.24
Rajasthan	334.73	8.51
West Bengal	274.88	6.99
Kerala	270.89	6.89
Uttar Pradesh	219.29	5.58
Maharashtra	181.76	4.62
Karnataka	181.32	4.61
Gujarat	149.91	3.81
Assam	132.09	3.36
Tamil Nadu	117.64	2.99
Andhra Pradesh	98.69	2.51
Delhi	91.52	2.33
Odisha	70.67	1.80
Jammu Kashmir	60.00	1.53
Bihar	55.08	1.40
Damodar Valley Corporation	45.36	1.15
Chhattisgarh	40.31	1.03
Uttarakhand	36.63	0.93
Daman and Diu - Dadra and Nagar Haveli	27.61	0.70
Madhya Pradesh	19.03	0.48
Tripura	18.96	0.48
Jharkhand	18.61	0.47
ArcelorMittal Nippon Steel India Limited	16.54	0.42
Himachal Pradesh	16.18	0.41
BHARAT ALUMINIUM COMPANY LTD (Bulk Consumer)	16.16	0.41
Jindal Power Limited, Stage-2	15.45	0.39
Haryana	14.33	0.36
Manipur	12.60	0.32
SKS Power Generation Chhattisgarh Limited	8.98	0.23
Meghalaya	8.20	0.21
The Tata Power Co Ltd (MTPS)	8.09	0.21
Government of Himachal Pradesh_NJHPS	6.73	0.17
MB POWER (MADHYA PRADESH) LIMITED	5.37	0.14
Government of Himachal Pradesh_Koldam HEP	4.68	0.12
Adani Power Limited - Raigarh TPP	3.59	0.09
North Central Railway Prayagraj	3.53	0.09
Goa WR	2.01	0.05
Government of Himachal Pradesh_CHAMERA2HEP	1.90	0.05
Goa SR	1.68	0.04
Government of Himachal Pradesh_Parbat3HEP	1.57	0.04
Government of Himachal Pradesh_RampurHEP	1.35	0.03
Government of Himachal Pradesh_Chamera3HEP	1.32	0.03
Government of Himachal Pradesh_Chamera1HEP	1.26	0.03
SIMHAPURI ENERGY LIMITED	1.18	0.03
Chandigarh (UT)	1.18	0.03
ACB (INDIA) LIMITED	1.01	0.03
Government of Himachal Pradesh_BairasuilHEP	0.82	0.02

Ratnagiri Gas & Power Private Limited	0.81	0.02
Sainj HEP	0.80	0.02
SHREE CEMENT LIMITED TPS	0.70	0.02
Nagaland	0.66	0.02
Kawas	0.65	0.02
NTPC Jhanor Gandhar GPS	0.61	0.02
Singoli Bhatwari HEP	0.34	0.01
Arunachal Pradesh	0.33	0.01
Sikkim	0.30	0.01
KARCHAM WANGTOO HYDRO ELECTRIC PLANT.	0.30	0.01
Pondicherry UT	0.26	0.01
JUNIPER GREEN COSMIC PRIVATE LIMITED_INFIRM	0.18	0.005
Mizoram	0.09	0.002
Budhil HEP (Greenko Budhil Hydro Power Pvt. Ltd.)	0.02	0.0004
AD HYDRO POWER LIMITED	0.02	0.0004
<b>TOTAL</b>	<b>3931.77</b>	<b>100.00</b>
<b>Volume purchased by top 5 Regional Entities</b>	<b>2205.51</b>	<b>56.09</b>
<b>Herfindahl-Hirschman Index</b>		<b>0.0896</b>

Source: NLDC

**Table-28: TOTAL VOLUME OF NET SHORT-TERM TRANSACTIONS (REGIONAL ENTITY-WISE),  
SEPTEMBER 2024**

S. No.	Name of the Entity	Total volume of net short-term transactions of electricity*
1	Gujarat	2140.98
2	Punjab	1270.24
3	Telangana	1029.28
4	Rajasthan	720.74
5	Maharashtra	710.95
6	Andhra Pradesh	501.45
7	West Bengal	491.44
8	Delhi	404.43
9	Kerala	374.65
10	Daman and Diu - Dadra and Nagar Haveli	345.75
11	Tamil Nadu	330.15
12	Uttar Pradesh	313.16
13	ArcelorMittal Nippon Steel India Limited	194.13
14	Chhattisgarh	191.49
15	BHARAT ALUMINIUM COMPANY LTD (Bulk Consumer)	173.59
16	Uttarakhand	170.08
17	Jharkhand	77.43
18	Assam	44.16
19	North Central Railway Prayagraj	40.17
20	Goa WR	32.52
21	Damodar Valley Corporation	29.58
22	Tripura	13.27
23	Goa SR	9.30
24	The Tata Power Co Ltd (MTPS)	7.38
25	Manipur	7.28
26	NEA - UP STU	3.34
27	MB POWER (MADHYA PRADESH) LIMITED	2.65
28	Ratnagiri Gas & Power Private Limited	0.81
29	NTPC Jhanor Gandhar GPS	0.61
30	Kawas	0.24
31	Chuzachen HEP	-0.04
32	NTPC SAIL POWER COMPANY LIMITED	-0.12
33	Serentica Renewables India 1 Private Limited- Koppal (Infirm)	-0.14
34	RENEW SURYA ROSHNI PRIVATE LIMITED-Fatehgarh-III PS	-0.30
35	ADANI GREEN ENERGY TWENTY SIX A LIMITED_infirm	-0.47
36	AGARTALA GAS BASED POWER STATION	-0.47
37	NTPC Unchahar Stage III	-0.58
38	Nani Virani Wind Energy Private Limited	-0.62
39	Simhadri Floating solar (10 MW)	-0.68
40	Dhariwal ISTS	-0.71
41	VENA ENERGY VIDYUTH PRIVATE LIMITED_SOLAR_INFIRM	-0.84
42	JORETHANG LOOP HEP, DANS ENERGY PRIVATE LIMITED	-1.07
43	Tashiding HEP, Shiga Energy Private Limited	-1.12
44	DHARIWAL STU OTH	-1.23
45	NLC INDIA LIMITED THERMAL POWER STATION II EXPANSION	-1.27
46	Simhadri FSP 15 MW	-1.28
47	NTPC SOLAPUR SOLAR PV Station	-1.36
48	NTPC Mouda Stage II	-1.46
49	SEMBCORP GREEN INFRA PRIVATE LIMITED (INFIRM)	-1.65
50	NTPC Simhadri Stage I	-1.76
51	ASSAM GAS BASED POWER STATION	-1.88
52	NTPC Ramagundam Stage III	-1.89
53	GMR KAMALANGA ENERGY LTD-CTU	-2.02
54	NEA Nepal Solu Khola (Dudhkoshi) Hydropower Project	-2.08
55	NTECL VALLUR	-2.19
56	Serentica Renewables India 4 Private Limited	-2.35
57	CONTINUUM POWER TRADING (TN) PRIVATE LIMITED	-2.53
58	NTPC Mouda Stage I	-2.80
59	ADANI SOLAR ENERGY RJ TWO PRIVATE LIMITED (infirm)	-3.30
60	TANAKPUR POWER STATION	-3.34
61	Nagaland	-3.37
62	ADHUNIK POWER & NATURAL RESOURCES LIMITED	-3.47

63	IL&FS TAMIL NADU POWER COMPANY LIMITED	-3.81
64	NTPC Korba Stage III	-3.91
65	NTPC Vindhyachal Stage V	-3.93
66	NLC INDIA LIMITED THERMAL POWER STATION I EXPANSION	-3.95
67	NTPC Solapur	-4.02
68	NLC INDIA LIMITED THERMAL POWER STATION II STAGE I	-4.04
69	NLC INDIA LIMITED THERMAL POWER STATION II STAGE II	-4.79
70	JSW RENEW ENERGY LIMITED INFIRM	-5.14
71	NTPC Vindhyachal Stage III	-5.42
72	NTPC Vindhyachal Stage II	-5.42
73	NTPC khargone	-5.58
74	NTPC Dadri Stage I	-5.80
75	NTPC Ramagundam Stage I &II	-5.91
76	BHARAT ALUMINIUM COMPANY LTD	-5.92
77	NTPC Vindhyachal Stage I	-6.00
78	ADANI WIND ENERGY KUTCHH FOUR Ltd. Nakhatrana (infirm)	-6.10
79	Budhil HEP (Greenko Budhil Hydro Power Pvt. Ltd.)	-6.16
80	Dudhkunda Khola Hydropower Project	-6.56
81	Government of Himachal Pradesh_BairasuilHEP	-6.58
82	NTPC Dadri Stage II	-6.59
83	NTPC KUDGI	-6.61
84	NTPC Unchahar Stage II	-6.79
85	NREL-Dayapar Wind	-6.91
86	NTPC Talcher Stage I	-7.21
87	VENA ENERGY VIDYUTH PRIVATE LIMITED_INFIRM	-7.24
88	NTPC Rihand stage I	-7.44
89	NTPC Unchahar Stage I	-7.46
90	RENEW SURYA OJAS PRIVATE LIMITED_INFIRM	-7.54
91	NTPC Vindhyachal Stage IV	-7.57
92	NTPC Sipat Stage II	-7.80
93	NTPP BRBCL	-7.86
94	NLC INDIA LIMITED NEYVELI NEW THERMAL POWER STATION	-7.89
95	Modi Khola Hydropower Project	-8.11
96	MAYA KHOLA HYDRO POWER PROJECT	-8.14
97	NTPC Darlipali	-8.17
98	NTPC Simhadri Stage II	-8.27
99	JUNIPER GREEN COSMIC PRIVATE LIMITED_INFIRM	-8.52
100	NTPC BARH Stage I	-8.69
101	Pondicherry UT	-8.86
102	ADANI SOLAR ENERGY JODHPUR TWO LIMITED	-9.08
103	NTPC Lara Stage I	-9.10
104	Amplus Ages Private Limited	-9.16
105	NTPC Gadarwara	-9.40
106	IRCON RENEWABLE POWER LIMITED Infirm	-9.52
107	Onevolt Energy Private Limited	-9.53
108	WIND FIVE REENERGY LIMITED	-9.63
109	Bongaigaon Thermal Power Station NTPC	-9.88
110	NTPC Telangana	-10.33
111	NTPC Korba Stage I &II	-10.35
112	NTPC Kahalgaon stage I	-10.53
113	RENEW SURYA ROSHNI PRIVATE LIMITED Koppal PS	-10.61
114	Meghalaya	-10.75
115	NTPC Unchahar Stage IV	-10.99
116	NTPC Farakka stage III	-11.07
117	Government of Himachal Pradesh_Parbat3HEP	-11.20
118	MAITHON POWER LIMITED	-11.32
119	Ayana Renewable Power Three Private Limited Infirm	-11.70
120	GMR Warora Energy Limited	-11.98
121	R.K.M POWERGEN PRIVATE LIMITED	-12.44
122	NEA - Bihar STU	-13.31
123	Sembcorp Energy India Limited Project II	-13.57
124	Grian Energy Private Limited	-13.88
125	Maruti Clean Coal and Power Limited	-14.20
126	Government of Himachal Pradesh _ Chamera3HEP	-14.34
127	Government of Himachal Pradesh_Koldam HEP	-14.63
128	NTPC Sipat Stage I	-15.24

129	NTPC Kahalgaon stage II	-15.70
130	NTPC Rihand stage II	-15.89
131	Transition Energy Services Private Limited	-16.13
132	Ramagundam Floating solar	-16.36
133	Government of Himachal Pradesh_ CHAMERA2HEP	-16.57
134	Adani Green Energy Twenty Five A Limited_infirm	-17.00
135	NTPC Rihand stage III	-17.06
136	Palatana Plant	-18.18
137	Nikachhu Hydropower Project	-18.78
138	NTPC Tanda Stage II	-18.90
139	NTPC BARH Stage II	-19.95
140	Government of Himachal Pradesh_NJHPS	-20.65
141	TPSL Banderwala SECI 100_INF	-20.69
142	Mizoram	-20.70
143	DGEN MEGA POWER PROJECT	-20.93
144	ADANI RENEWABLE ENERGY FIFTY FIVE LIMITED_PSS3_infirm (162.5 MW Hybrid Solar of 187.5MW HPD)	-21.63
145	Arunachal Pradesh	-21.85
146	Adani Green Energy Twenty Six B Limited_infirm	-22.21
147	Government of Himachal Pradesh _ Chamera1HEP	-22.30
148	ADANI GREEN ENERGY TWENTY FIVE LIMITED_infirm	-22.39
149	KANTI BIJLEE UTPADAN NIGAM LIMITED	-23.32
150	Sikkim	-24.76
151	Amp Energy Green Six Private Limited	-24.78
152	NLC Tamilnadu Power Limited	-24.93
153	Transition Green Energy Private Limited	-24.97
154	ADANI SOLAR ENERGY JAISALMER TWO PRIVATE LIMITED(Project-2)	-25.31
155	TRN ENERGY PRIVATE LIMITED	-25.40
156	Government of Himachal Pradesh_RampurHEP	-25.40
157	Serentica Renewables India 1 Private Limited	-25.51
158	Chandigarh (UT)	-25.83
159	NTPC Talcher Super Thermal Power Station Stage II	-26.40
160	Sasan Power Limited	-26.74
161	TPSL 200MW TPTCL Banderwala	-27.04
162	SEIL Energy India Limited Project II	-27.05
163	Adept Renewable Technologies Private Limited	-27.89
164	Jammu Kashmir	-31.77
165	NTPC North Karanpura STPS	-31.92
166	Basochhu Hydropower Plant Bhutan	-32.45
167	MEENAKSHI ENERGY LIMITED	-32.62
168	NTPC Singrauli	-32.70
169	Sainj HEP	-32.87
170	OSTRO KANNADA POWER PRIVATE LIMITED	-34.80
171	NEA Likhu-2 Hydropower Project	-35.48
172	NEPAL ELECTRICITY AUTHORITY TANAKPUR	-40.97
173	RENEW SURYA PRATAP PRIVATE LIMITED	-41.82
174	ADANI SOLAR ENERGY RJ TWO PRIVATE LIMITED	-41.96
175	SKS Power Generation Chhattisgarh Limited	-43.38
176	ReNew Surya Ravi Private Limited	-47.76
177	NTPC Farakka stage I	-49.61
178	SHREE CEMENT LIMITED TPS	-50.20
179	ADANI WIND ENERGY KUTCHH FOUR Ltd. Nakhatrana	-51.09
180	Sorang HEP (Himachal Sorang Power Pvt. Ltd.)	-54.19
181	Singoli Bhatwari HEP	-63.74
182	NABINAGAR POWER GENERATING COMPANY LIMITED	-64.68
183	ACB (INDIA) LIMITED	-72.71
184	ADANI RENEWABLE ENERGY FORTY ONE LIMITED_infirm	-75.42
185	AD HYDRO POWER LIMITED	-79.49
186	RENEW SURYA OJAS PRIVATE LIMITED-Wind	-99.81
187	SIMHAPURI ENERGY LIMITED	-105.10
188	Adani Green Energy Twenty Five B Limited_infirm	-105.40
189	Jindal Steel & Power Ltd , DCP	-108.91
190	KARCHAM WANGTOO HYDRO ELECTRIC PLANT.	-113.02
191	KAMENG HYDRO POWER STATION	-119.16
192	Jhabua Power Limited	-120.04
193	SEMBCORP ENERGY INDIA LIMITED	-120.64

194	IND BARATH ENERGY UTKAL LIMITED	-121.03
195	Jindal Power Limited, Stage-1	-121.61
196	SEIL ENERGY INDIA LIMITED	-121.80
197	COASTAL ENERGEN PRIVATE LIMITED	-133.17
198	IGSTPS JHAJJAR	-141.36
199	DHARIWAL STU MH	-150.37
200	Jaypee Nigrie Super Thermal Power Plant	-178.28
201	D B Power Limited	-183.87
202	ADANI RENEWABLE ENERGY HOLDING FOUR LIMITED	-199.88
203	Odisha	-206.27
204	HIMACHAL PRADESH	-233.55
205	Adani Power Limited - Raigarh TPP	-237.04
206	Karnataka	-259.35
207	MAHAN ENERGEN LIMITED U#1	-276.76
208	NEPAL ELECTRICITY AUTHORITY MUZAFFARPUR	-278.10
209	Bihar	-293.94
210	MAHAN ENERGEN LIMITED U#2	-315.89
211	Jindal India Thermal Power Limited	-366.51
212	Adani Power Limited-Raipur TPP	-397.81
213	Haryana	-428.35
214	Jindal Power Limited, Stage-2	-542.56
215	Madhya Pradesh	-1132.02
<i>* Total volume of net short-term transactions of electricity includes net of transactions of electricity through bilateral and power exchanges</i>		
<i>(-) indicates sale and (+) indicates purchase</i>		

Source: NLDC

**Table-29: DETAILS OF CONGESTION IN POWER EXCHANGES, SEPTEMBER 2024**

	Details of Congestion	Day Ahead Market			Green Day Ahead Market			High Price Day Ahead Market			Real Time Market		
		IEX	PXIL	HPX	IEX	PXIL	HPX	IEX	PXIL	HPX	IEX	PXIL	HPX
1	Unconstrained Cleared Volume (MU)	4576.55	0.00	0.08	718.08	0.00	0.00	0.00	0.00	0.00	3915.84	19.10	0.00
2	Actual Cleared Volume and hence scheduled (MU)	4562.10	0.00	0.08	717.89	0.00	0.00	0.00	0.00	0.00	3912.78	18.99	0.00
3	Volume of electricity that could not be cleared and hence not scheduled because of congestion (MU) *	14.44	0.00	0.00	0.19	0.00	0.00	0.00	0.00	0.00	3.06	0.12	0.00
4	Volume of electricity that could not be cleared and hence not scheduled because of reasons other than congestion (MU)	0.00	0.00	0.00	0.00	0.00	0.00	0.00	0.00	0.00	0.00	0.00	0.00
5	Volume of electricity that could not be cleared as % to Unconstrained Cleared Volume	0.32%	0.00%	0.00%	0.03%	0.00%	0.00%	0.00%	0.00%	0.00%	0.08%	0.61%	0.00%
6	Percentage of the time congestion occurred during the month (Number of hours congestion occurred/ Total number of hours in the month)	6.60%	0.00%	0.00%	0.38%	0.00%	0.00%	0.00%	0.00%	0.00%	2.19%	2.40%	0.00%
7	Congestion occurrence (%) time block wise												
	0.00 - 6.00 hours	21.58%	0.00%	0.00%	0.00%	0.00%	0.00%	0.00%	0.00%	0.00%	23.81%	1.45%	0.00%
	6.00 - 12.00 hours	41.58%	0.00%	0.00%	27.27%	0.00%	0.00%	0.00%	0.00%	0.00%	6.35%	0.00%	0.00%
	12.00 - 18.00 hours	26.32%	0.00%	0.00%	72.73%	0.00%	0.00%	0.00%	0.00%	0.00%	17.46%	17.39%	0.00%
	18.00 - 24.00 hours	10.53%	0.00%	0.00%	0.00%	0.00%	0.00%	0.00%	0.00%	0.00%	52.38%	81.16%	0.00%

\* This power would have been scheduled had there been no congestion

Source: IEX, PXIL, HPX & NLDC

**Table-30: VOLUME OF SHORT TERM TRANSACTIONS OF ELECTRICITY (DAY-WISE) (MU), SEPTEMBER 2024**

Date	Bilateral <sup>^</sup> (Traders, PX, Direct)	Day Ahead Market <sup>#</sup>			Green Day Ahead Market <sup>#</sup>			High Price DAM <sup>#</sup>			Real Time Market <sup>#</sup>			Total Electricity Generation (MU)*
		IEX	PXIL	HPX	IEX	PXIL	HPX	IEX	PXIL	HPX	IEX	PXIL	HPX	
1-Sep-24	151.37	122.72	0.00	0.00	25.01	0.00	0.00	0.00	0.00	0.00	120.60	0.00	0.00	4715.80
2-Sep-24	164.21	109.00	0.00	0.00	31.87	0.00	0.00	0.00	0.00	0.00	111.63	0.00	0.00	4221.96
3-Sep-24	156.70	115.11	0.00	0.00	24.64	0.00	0.00	0.00	0.00	0.00	109.53	0.00	0.00	4309.70
4-Sep-24	165.39	112.99	0.00	0.00	27.68	0.00	0.00	0.00	0.00	0.00	107.86	0.02	0.00	4735.66
5-Sep-24	165.59	113.36	0.00	0.00	29.05	0.00	0.00	0.00	0.00	0.00	119.08	0.00	0.00	4105.56
6-Sep-24	173.50	114.57	0.00	0.00	30.05	0.00	0.00	0.00	0.00	0.00	110.89	0.00	0.00	4162.26
7-Sep-24	160.95	119.51	0.00	0.00	25.14	0.00	0.00	0.00	0.00	0.00	111.22	0.00	0.00	4107.56
8-Sep-24	170.43	118.27	0.00	0.00	25.37	0.00	0.00	0.00	0.00	0.00	134.87	0.00	0.00	3984.65
9-Sep-24	169.39	119.57	0.00	0.00	29.41	0.00	0.00	0.00	0.00	0.00	111.45	0.00	0.00	4172.26
10-Sep-24	172.58	106.88	0.00	0.00	27.38	0.00	0.00	0.00	0.00	0.00	130.91	0.00	0.00	4210.28
11-Sep-24	172.49	126.32	0.00	0.00	28.86	0.00	0.00	0.00	0.00	0.00	143.94	0.00	0.00	4201.38
12-Sep-24	190.62	128.67	0.00	0.00	25.46	0.00	0.00	0.00	0.00	0.00	158.71	0.00	0.00	4091.98
13-Sep-24	184.85	90.90	0.00	0.00	27.74	0.00	0.00	0.00	0.00	0.00	173.42	0.00	0.00	4060.40
14-Sep-24	187.79	159.29	0.00	0.00	27.77	0.00	0.00	0.00	0.00	0.00	154.83	0.00	0.00	4052.18
15-Sep-24	154.18	156.00	0.00	0.00	23.02	0.00	0.00	0.00	0.00	0.00	155.67	0.00	0.00	3976.94
16-Sep-24	166.15	177.06	0.00	0.00	24.12	0.00	0.00	0.00	0.00	0.00	175.46	0.00	0.00	4198.12
17-Sep-24	173.34	184.43	0.00	0.00	26.05	0.00	0.00	0.00	0.00	0.00	164.62	0.00	0.00	4233.47
18-Sep-24	194.46	201.01	0.00	0.00	23.28	0.00	0.00	0.00	0.00	0.00	140.19	0.69	0.00	4354.29
19-Sep-24	202.54	189.73	0.00	0.00	22.61	0.00	0.00	0.00	0.00	0.00	133.61	3.62	0.00	4494.59
20-Sep-24	191.96	211.26	0.00	0.00	21.09	0.00	0.00	0.00	0.00	0.00	104.98	1.49	0.00	4657.14
21-Sep-24	188.60	205.13	0.00	0.08	19.26	0.00	0.00	0.00	0.00	0.00	123.96	0.83	0.00	4645.33
22-Sep-24	167.73	167.01	0.00	0.00	24.62	0.00	0.00	0.00	0.00	0.00	121.64	0.51	0.00	4542.46
23-Sep-24	174.81	169.50	0.00	0.00	12.98	0.00	0.00	0.00	0.00	0.00	117.58	1.52	0.00	4708.98
24-Sep-24	191.32	155.01	0.00	0.00	19.81	0.00	0.00	0.00	0.00	0.00	132.69	5.33	0.00	4726.51
25-Sep-24	186.97	169.81	0.00	0.00	27.90	0.00	0.00	0.00	0.00	0.00	136.18	0.80	0.00	4592.42
26-Sep-24	200.10	178.69	0.00	0.00	13.47	0.00	0.00	0.00	0.00	0.00	140.37	0.28	0.00	4383.43
27-Sep-24	208.79	165.16	0.00	0.00	18.91	0.00	0.00	0.00	0.00	0.00	137.56	0.00	0.00	4227.71
28-Sep-24	231.67	193.62	0.00	0.00	19.89	0.00	0.00	0.00	0.00	0.00	123.74	0.33	0.00	4273.21
29-Sep-24	187.69	180.78	0.00	0.00	16.31	0.00	0.00	0.00	0.00	0.00	119.22	0.00	0.00	4291.56
30-Sep-24	191.42	200.75	0.00	0.00	19.12	0.00	0.00	0.00	0.00	0.00	86.40	3.55	0.00	4567.67
<b>Total</b>	<b>5397.56</b>	<b>4562.10</b>	<b>0.00</b>	<b>0.08</b>	<b>717.89</b>	<b>0.00</b>	<b>0.00</b>	<b>0.00</b>	<b>0.00</b>	<b>0.00</b>	<b>3912.78</b>	<b>18.99</b>	<b>0.00</b>	<b>130005.46</b>

Source: NLDC

<sup>^</sup> includes bilateral short-term transactions under GNA and T-GNA

\* As available on CEA Website. Gross Electricity Generation excluding electricity generation from renewables and captive power plants.

<sup>#</sup> Scheduled volume of all the bid areas.

Note: Volume here has been finalised in consultation with Grid India, after resolving issues that emerged post implementation of GNA Regulations and transition to new WBES software by Grid India.



**Table-31(a): PRICE OF DAY AHEAD TRANSACTIONS OF ELECTRICITY (DAY-WISE) (₹/kWh), SEPTEMBER 2024**

Market Segment	Day Ahead Market of IEX			Day Ahead Market of PXIL			Day Ahead Market of HPX		
Date	Minimum ACP	Maximum ACP	WA Price*	Minimum ACP	Maximum ACP	WA Price*	Minimum ACP	Maximum ACP	WA Price*
1-Sep-24	0.40	7.20	3.27	-	-	-	-	-	-
2-Sep-24	1.10	10.00	4.62	-	-	-	-	-	-
3-Sep-24	0.90	10.00	4.45	-	-	-	-	-	-
4-Sep-24	1.00	10.00	4.97	-	-	-	-	-	-
5-Sep-24	1.10	10.00	4.44	-	-	-	-	-	-
6-Sep-24	1.00	10.00	4.06	-	-	-	-	-	-
7-Sep-24	0.86	9.53	3.68	-	-	-	-	-	-
8-Sep-24	0.47	5.53	3.05	-	-	-	-	-	-
9-Sep-24	1.60	8.00	3.53	-	-	-	-	-	-
10-Sep-24	1.33	5.75	3.11	-	-	-	-	-	-
11-Sep-24	1.89	10.00	3.77	-	-	-	-	-	-
12-Sep-24	1.70	10.00	3.77	-	-	-	-	-	-
13-Sep-24	1.22	10.00	3.14	-	-	-	-	-	-
14-Sep-24	1.43	10.00	3.44	-	-	-	-	-	-
15-Sep-24	0.79	4.41	2.73	-	-	-	-	-	-
16-Sep-24	1.50	10.00	3.60	-	-	-	-	-	-
17-Sep-24	1.25	10.00	3.31	-	-	-	-	-	-
18-Sep-24	2.00	10.00	4.51	-	-	-	-	-	-
19-Sep-24	2.23	10.00	4.87	-	-	-	-	-	-
20-Sep-24	2.50	10.00	5.37	-	-	-	-	-	-
21-Sep-24	2.68	10.00	5.25	-	-	-	10.00	10.00	10.00
22-Sep-24	1.58	10.00	4.28	-	-	-	-	-	-
23-Sep-24	2.06	10.00	4.89	-	-	-	-	-	-
24-Sep-24	2.05	10.00	5.46	-	-	-	-	-	-
25-Sep-24	3.10	10.00	5.57	-	-	-	-	-	-
26-Sep-24	2.89	10.00	4.88	-	-	-	-	-	-
27-Sep-24	2.45	10.00	4.52	-	-	-	-	-	-
28-Sep-24	2.60	10.00	4.60	-	-	-	-	-	-
29-Sep-24	1.61	10.00	4.07	-	-	-	-	-	-
30-Sep-24	2.89	10.00	4.68	-	-	-	-	-	-
	<b>0.40<sup>#</sup></b>	<b>10.00<sup>#</sup></b>	<b>4.28</b>	-	-	-	<b>10.00<sup>#</sup></b>	<b>10.00<sup>#</sup></b>	<b>10.00</b>

Source: IEX, PXIL and HPX

\* Weighted average price computed based on Area Clearing Volume (ACV) and Area Clearing Price (ACP) for each hour of the day. Here, ACV and ACP represent the scheduled volume and weighted average price of all the bid areas of power exchanges.

# Maximum/Minimum in the month

**Table-31(b): PRICE OF GREEN DAY AHEAD TRANSACTIONS OF ELECTRICITY (DAY-WISE) (₹/kWh),  
SEPTEMBER 2024**

Market Segment	Green Day Ahead Market of IEX			Green Day Ahead Market of PXIL			Green Day Ahead Market of HPX		
Date	Minimum ACP	Maximum ACP	Weighted Average Price*	Minimum ACP	Maximum ACP	Weighted Average Price*	Minimum ACP	Maximum ACP	Weighted Average Price*
1-Sep-24	1.42	9.00	3.21	-	-	-	-	-	-
2-Sep-24	1.50	7.80	3.65	-	-	-	-	-	-
3-Sep-24	1.71	10.00	3.95	-	-	-	-	-	-
4-Sep-24	1.50	10.00	4.71	-	-	-	-	-	-
5-Sep-24	1.50	10.00	4.43	-	-	-	-	-	-
6-Sep-24	1.30	10.00	4.15	-	-	-	-	-	-
7-Sep-24	1.00	9.60	3.27	-	-	-	-	-	-
8-Sep-24	1.00	7.50	3.11	-	-	-	-	-	-
9-Sep-24	1.50	9.00	3.44	-	-	-	-	-	-
10-Sep-24	1.60	7.00	3.24	-	-	-	-	-	-
11-Sep-24	1.40	6.50	3.06	-	-	-	-	-	-
12-Sep-24	1.97	9.00	3.72	-	-	-	-	-	-
13-Sep-24	1.90	10.00	3.41	-	-	-	-	-	-
14-Sep-24	1.50	10.00	3.12	-	-	-	-	-	-
15-Sep-24	1.00	7.00	2.85	-	-	-	-	-	-
16-Sep-24	1.30	6.90	2.78	-	-	-	-	-	-
17-Sep-24	1.45	10.00	3.01	-	-	-	-	-	-
18-Sep-24	2.00	10.00	3.33	-	-	-	-	-	-
19-Sep-24	2.00	10.00	4.05	-	-	-	-	-	-
20-Sep-24	2.50	10.00	4.44	-	-	-	-	-	-
21-Sep-24	2.60	10.00	4.58	-	-	-	-	-	-
22-Sep-24	1.30	10.00	3.25	-	-	-	-	-	-
23-Sep-24	3.00	10.00	5.86	-	-	-	-	-	-
24-Sep-24	3.00	10.00	4.94	-	-	-	-	-	-
25-Sep-24	2.20	10.00	4.52	-	-	-	-	-	-
26-Sep-24	4.20	10.00	6.34	-	-	-	-	-	-
27-Sep-24	2.89	10.00	4.65	-	-	-	-	-	-
28-Sep-24	2.50	10.00	4.32	-	-	-	-	-	-
29-Sep-24	1.60	10.00	4.04	-	-	-	-	-	-
30-Sep-24	1.72	10.00	3.79	-	-	-	-	-	-
	<b>1.00#</b>	<b>10.00#</b>	<b>3.81</b>	-	-	-	-	-	-

Source: IEX, PXIL and HPX

\* Weighted average price computed based on Area Clearing Volume (ACV) and Area Clearing Price (ACP) for each hour of the day. Here, ACV and ACP represent the scheduled volume and weighted average price of all the bid areas of power exchanges.

# Maximum/Minimum in the month

**Table-31(c): PRICE OF REAL TIME TRANSACTIONS OF ELECTRICITY (DAY-WISE) (₹/kWh), SEPTEMBER 2024**

Market Segment	Real Time Market of IEX			Real Time Market of PXIL			Real Time Market of HPX		
	Date	Minimum ACP	Maximum ACP	Weighted Average Price*	Minimum ACP	Maximum ACP	Weighted Average Price*	Minimum ACP	Maximum ACP
1-Sep-24	0.30	5.50	2.56	2.00	2.00	2.00	-	-	-
2-Sep-24	1.00	10.00	4.11	-	-	-	-	-	-
3-Sep-24	0.98	10.00	4.14	-	-	-	-	-	-
4-Sep-24	0.55	10.00	2.78	1.88	3.50	2.86	-	-	-
5-Sep-24	0.45	10.00	2.45	-	-	-	-	-	10.00
6-Sep-24	1.00	6.20	2.99	-	-	-	-	-	10.00
7-Sep-24	0.70	5.50	2.98	-	-	-	-	-	-
8-Sep-24	0.48	4.26	2.14	-	-	-	-	-	-
9-Sep-24	1.70	10.00	3.53	-	-	-	-	-	-
10-Sep-24	0.54	10.00	3.25	-	-	-	-	-	-
11-Sep-24	0.93	5.10	2.96	-	-	-	-	-	-
12-Sep-24	1.25	10.00	3.06	-	-	-	-	-	-
13-Sep-24	0.80	5.50	2.62	-	-	-	-	-	-
14-Sep-24	0.72	10.00	2.70	-	-	-	-	-	-
15-Sep-24	0.14	4.34	2.45	-	-	-	-	-	-
16-Sep-24	1.89	9.28	3.31	-	-	-	-	-	10.00
17-Sep-24	2.00	8.00	3.58	-	-	-	-	-	-
18-Sep-24	2.77	10.00	4.81	2.06	10.00	7.41	-	-	-
19-Sep-24	2.08	10.00	5.05	1.94	10.00	7.39	-	-	-
20-Sep-24	3.09	10.00	5.97	10.00	10.00	10.00	-	-	-
21-Sep-24	2.86	10.00	5.04	6.00	10.00	9.11	-	-	-
22-Sep-24	2.77	10.00	4.88	9.00	10.00	9.75	-	-	10.00
23-Sep-24	3.96	10.00	5.99	3.57	10.00	9.69	-	-	-
24-Sep-24	3.09	10.00	5.94	3.00	10.00	9.96	-	-	-
25-Sep-24	1.01	10.00	4.16	6.00	10.00	9.33	-	-	-
26-Sep-24	1.76	10.00	3.44	10.00	10.00	10.00	-	-	-
27-Sep-24	1.89	10.00	3.19	-	-	-	-	-	-
28-Sep-24	2.06	10.00	3.75	4.00	10.00	8.00	-	-	-
29-Sep-24	1.91	5.50	3.30	-	-	-	-	-	-
30-Sep-24	2.80	10.00	4.93	10.00	10.00	10.00	-	-	-
	<b>0.14<sup>#</sup></b>	<b>10.00<sup>#</sup></b>	<b>3.67</b>	<b>1.88<sup>#</sup></b>	<b>10.00<sup>#</sup></b>	<b>9.26</b>	-	-	-

Source: IEX, PXIL and HPX

\* Weighted average price computed based on Area Clearing Volume (ACV) and Area Clearing Price (ACP) for each hour of the day. Here, ACV and ACP represent the scheduled volume and weighted average price of all the bid areas of power exchanges.

# Maximum/Minimum in the month

**Table-31(d): PRICE OF HIGH PRICE DAY AHEAD TRANSACTIONS OF ELECTRICITY (DAY-WISE) (₹/kWh),  
SEPTEMBER 2024**

Market Segment	High Price Day Ahead Market of IEX			High Price Day Ahead Market of PXIL			High Price Day Ahead Market of HPX		
	Minimum ACP	Maximum ACP	Weighted Average Price	Minimum ACP	Maximum ACP	Weighted Average Price	Minimum ACP	Maximum ACP	Weighted Average Price
1-Sep-24	-	-	-	-	-	-	-	-	-
2-Sep-24	-	-	-	-	-	-	-	-	-
3-Sep-24	-	-	-	-	-	-	-	-	-
4-Sep-24	-	-	-	-	-	-	-	-	-
5-Sep-24	-	-	-	-	-	-	-	-	-
6-Sep-24	-	-	-	-	-	-	-	-	-
7-Sep-24	-	-	-	-	-	-	-	-	-
8-Sep-24	-	-	-	-	-	-	-	-	-
9-Sep-24	-	-	-	-	-	-	-	-	-
10-Sep-24	-	-	-	-	-	-	-	-	-
11-Sep-24	-	-	-	-	-	-	-	-	-
12-Sep-24	-	-	-	-	-	-	-	-	-
13-Sep-24	-	-	-	-	-	-	-	-	-
14-Sep-24	-	-	-	-	-	-	-	-	-
15-Sep-24	-	-	-	-	-	-	-	-	-
16-Sep-24	-	-	-	-	-	-	-	-	-
17-Sep-24	-	-	-	-	-	-	-	-	-
18-Sep-24	-	-	-	-	-	-	-	-	-
19-Sep-24	-	-	-	-	-	-	-	-	-
20-Sep-24	-	-	-	-	-	-	-	-	-
21-Sep-24	-	-	-	-	-	-	-	-	-
22-Sep-24	-	-	-	-	-	-	-	-	-
23-Sep-24	-	-	-	-	-	-	-	-	-
24-Sep-24	-	-	-	-	-	-	-	-	-
25-Sep-24	-	-	-	-	-	-	-	-	-
26-Sep-24	-	-	-	-	-	-	-	-	-
27-Sep-24	-	-	-	-	-	-	-	-	-
28-Sep-24	-	-	-	-	-	-	-	-	-
29-Sep-24	-	-	-	-	-	-	-	-	-
30-Sep-24	-	-	-	-	-	-	-	-	-
	-	-	-	-	-	-	-	-	-

Source: IEX, PXIL and HPX

# Maximum/Minimum in the month

**Table-32: VOLUME OF SHORT-TERM TRANSACTIONS OF ELECTRICITY (REGIONAL ENTITY\*-WISE) (MU), SEPTEMBER 2024**

Name of the Entity	Through Bilateral			Through Power Exchange (DAM + GDAM + HPDAM + RTM)			Total Net***
	Sale	Purchase	Net**	Sale	Purchase	Net**	
Punjab	13.90	493.86	479.95	77.24	867.53	790.29	1270.24
Telangana	167.62	0.79	-166.83	127.55	1323.66	1196.12	1029.28
Rajasthan	61.24	57.02	-4.22	93.49	818.45	724.96	720.74
West Bengal	31.61	252.01	220.40	262.48	533.51	271.03	491.44
Kerala	46.48	43.04	-3.43	6.85	384.93	378.08	374.65
Uttar Pradesh	173.12	692.03	518.91	666.42	460.66	-205.75	313.16
Maharashtra	223.92	489.31	265.38	75.79	521.35	445.56	710.95
Karnataka	500.13	13.16	-486.97	217.33	444.95	227.62	-259.35
Gujarat	16.16	1120.67	1104.51	52.49	1088.96	1036.47	2140.98
Assam	0.00	13.07	13.07	101.00	132.09	31.09	44.16
Tamil Nadu	56.31	383.03	326.72	323.94	327.38	3.43	330.15
Andhra Pradesh	13.44	410.55	397.11	203.67	308.01	104.33	501.45
Delhi	3.44	471.26	467.82	213.39	150.00	-63.40	404.43
Odisha	77.39	138.72	61.34	432.23	164.63	-267.60	-206.27
Jammu Kashmir	51.35	45.32	-6.03	118.34	92.60	-25.74	-31.77
Bihar	0.76	42.18	41.42	402.54	67.18	-335.36	-293.94
Damodar Valley Corporation	69.64	0.00	-69.64	37.79	137.01	99.23	29.58
Chhattisgarh	11.62	126.56	114.94	97.48	174.03	76.55	191.49
Uttarakhand	43.07	184.34	141.26	66.63	95.45	28.82	170.08
Daman and Diu - Dadra and Nagar Haveli	0.00	0.15	0.15	0.25	345.86	345.61	345.75
Madhya Pradesh	590.46	48.07	-542.39	640.56	50.94	-589.63	-1132.02
Tripura	0.00	0.00	0.00	5.69	18.96	13.27	13.27
Jharkhand	0.95	57.61	56.66	71.72	92.50	20.78	77.43
ArcelorMittal Nippon Steel India Limited	0.00	37.67	37.67	0.00	156.45	156.45	194.13
HIMACHAL PRADESH	53.48	0.00	-53.48	198.89	18.81	-180.08	-233.55
BALCO (Bulk Consumer)	0.00	33.32	33.32	0.00	140.27	140.27	173.59
Jindal Power Limited, Stage-2	344.51	0.60	-343.91	214.10	15.45	-198.65	-542.56
Haryana	77.29	67.30	-9.99	531.10	112.73	-418.37	-428.35
Manipur	0.00	0.00	0.00	5.32	12.60	7.28	7.28
SKS Power Generation Chhattisgarh Limited	38.39	0.00	-38.39	13.97	8.98	-4.99	-43.38
Meghalaya	3.64	2.07	-1.58	18.19	9.02	-9.17	-10.75
The Tata Power Co Ltd (MTPS)	0.00	0.00	0.00	0.72	8.09	7.38	7.38
Government of Himachal Pradesh_NJHPS	0.00	0.00	0.00	27.38	6.73	-20.65	-20.65
MB POWER (MADHYA PRADESH) LIMITED	0.00	0.00	0.00	12.13	14.78	2.65	2.65
Government of Himachal Pradesh_Koldam HEP	0.00	0.00	0.00	19.32	4.68	-14.63	-14.63
Adani Power Limited - Raigarh TPP	151.30	25.05	-126.25	114.38	3.59	-110.79	-237.04
North Central Railway Prayagraj	0.00	0.00	0.00	0.00	40.17	40.17	40.17
Goa WR	0.13	15.71	15.59	4.01	20.95	16.93	32.52
Government of Himachal Pradesh_Chamera2HEP	0.00	0.00	0.00	18.47	1.90	-16.57	-16.57
Goa SR	0.00	0.13	0.13	0.02	9.20	9.17	9.30
Government of Himachal Pradesh_Parbat3HEP	0.00	0.00	0.00	12.77	1.57	-11.20	-11.20
Government of Himachal Pradesh_RampurHEP	0.00	0.00	0.00	26.75	1.35	-25.40	-25.40
Government of Himachal Pradesh_Chamera3HEP	0.00	0.00	0.00	15.66	1.32	-14.34	-14.34
Government of Himachal Pradesh_Chamera1HEP	0.00	0.00	0.00	23.56	1.26	-22.30	-22.30
SIMHAPURI ENERGY LIMITED	76.99	0.00	-76.99	29.29	1.18	-28.11	-105.10
Chandigarh (UT)	0.00	0.00	0.00	32.36	6.53	-25.83	-25.83
ACB (INDIA) LIMITED	26.52	0.00	-26.52	47.19	1.01	-46.18	-72.71
Government of Himachal Pradesh_BairasuilHEP	0.00	0.00	0.00	7.40	0.82	-6.58	-6.58
Ratnagiri Gas & Power Private Limited	0.00	0.00	0.00	0.00	0.81	0.81	0.81
Sainj HEP	0.00	0.00	0.00	33.66	0.80	-32.87	-32.87
SHREE CEMENT LIMITED TPS	0.64	0.00	-0.64	50.26	0.70	-49.56	-50.20
Nagaland	0.00	0.00	0.00	4.03	0.66	-3.37	-3.37
NTPC Jhanor Gandhar GPS	0.00	0.00	0.00	0.00	0.61	0.61	0.61
Singoli Bhatwari HEP	11.87	0.00	-11.87	52.21	0.34	-51.87	-63.74
Arunachal Pradesh	2.96	0.00	-2.96	19.22	0.33	-18.89	-21.85
Sikkim	10.69	0.00	-10.69	17.69	3.63	-14.07	-24.76
KARCHAM WANGTOO HEP	12.53	0.00	-12.53	100.78	0.30	-100.48	-113.02
Pondicherry UT	0.00	0.00	0.00	9.16	0.31	-8.86	-8.86
JUNIPER GREEN COSMIC PVT. LTD._INFIRM	0.00	0.00	0.00	8.70	0.18	-8.52	-8.52
Mizoram	0.00	0.00	0.00	20.80	0.09	-20.70	-20.70
Budhil HEP (Greenko Budhil Hydro Power Pvt. Ltd.)	0.00	0.00	0.00	6.18	0.02	-6.16	-6.16

AD HYDRO POWER LIMITED	13.07	0.00	-13.07	66.43	0.02	-66.42	-79.49
NABINAGAR POWER GENERATING COMPANY LIMITED	0.00	0.00	0.00	64.68	0.00	-64.68	-64.68
NTPC Singrauli	0.00	0.00	0.00	32.70	0.00	-32.70	-32.70
SEIL ENERGY INDIA LIMITED	48.21	0.00	-48.21	73.59	0.00	-73.59	-121.80
MEENAKSHI ENERGY LIMITED	4.94	0.00	-4.94	27.68	0.00	-27.68	-32.62
NTPC Farakka stage I	0.00	0.00	0.00	49.61	0.00	-49.61	-49.61
Sasan Power Limited	0.00	0.00	0.00	26.74	0.00	-26.74	-26.74
TRN ENERGY PRIVATE LIMITED	0.00	0.00	0.00	25.40	0.00	-25.40	-25.40
NLC Tamilnadu Power Limited	0.00	0.00	0.00	24.93	0.00	-24.93	-24.93
RENEW SURYA OJAS PRIVATE LIMITED-Wind	0.00	0.00	0.00	99.81	0.00	-99.81	-99.81
Adani Power Limited-Raipur TPP	256.87	8.95	-247.93	149.88	0.00	-149.88	-397.81
ADANI RENEWABLE ENERGY HOLDING FOUR LIMITED	52.51	0.00	-52.51	147.37	0.00	-147.37	-199.88
NTPC Tanda Stage II	0.00	0.00	0.00	18.90	0.00	-18.90	-18.90
NTPC Rihand stage III	0.00	0.00	0.00	17.06	0.00	-17.06	-17.06
D B Power Limited	81.09	0.00	-81.09	102.78	0.00	-102.78	-183.87
NTPC Rihand stage II	0.00	0.00	0.00	15.89	0.00	-15.89	-15.89
NTPC Kahalgaon stage II	0.00	0.00	0.00	15.70	0.00	-15.70	-15.70
ADANI RENEWABLE ENERGY FORTY ONE LIMITED_infirm	9.12	0.00	-9.12	66.31	0.00	-66.31	-75.42
MAHAN ENERGEN LIMITED U#1	161.08	1.85	-159.23	117.52	0.00	-117.52	-276.76
NEPAL ELECTRICITY AUTHORITY MUZAFFARPUR	0.00	0.00	0.00	278.10	0.00	-278.10	-278.10
Jhabua Power Limited	100.97	0.00	-100.97	21.38	2.32	-19.07	-120.04
NTPC Sipat Stage I	0.00	0.00	0.00	15.24	0.00	-15.24	-15.24
Jindal Steel & Power Ltd , DCPD	0.00	0.00	0.00	108.91	0.00	-108.91	-108.91
MAITHON POWER LIMITED	0.00	0.00	0.00	11.32	0.00	-11.32	-11.32
RENEW SURYA ROSHNI PRIVATE LIMITED Koppal PS	0.00	0.00	0.00	10.61	0.00	-10.61	-10.61
NTPC BARH Stage II	0.00	0.00	0.00	19.95	0.00	-19.95	-19.95
NTPC North Karanpura STPS	0.00	0.00	0.00	31.92	0.00	-31.92	-31.92
Jindal Power Limited, Stage-1	17.58	0.00	-17.58	104.03	0.00	-104.03	-121.61
NTPC Talcher Super Thermal Power Station Stage II	0.00	0.00	0.00	26.40	0.00	-26.40	-26.40
NTPC Telangana	0.00	0.00	0.00	10.33	0.00	-10.33	-10.33
NTPC Korba Stage I &II	0.00	0.00	0.00	10.35	0.00	-10.35	-10.35
NTPC Darlipali	0.00	0.00	0.00	8.17	0.00	-8.17	-8.17
NTPC Kahalgaon stage I	0.00	0.00	0.00	10.53	0.00	-10.53	-10.53
NLC INDIA LIMITED NEYVELI NEW THERMAL POWER STATION	0.00	0.00	0.00	7.89	0.00	-7.89	-7.89
NTPC Vindhyachal Stage IV	0.00	0.00	0.00	7.57	0.00	-7.57	-7.57
NTPC Gadawara	0.00	0.00	0.00	9.40	0.00	-9.40	-9.40
NEPAL ELECTRICITY AUTHORITY TANAKPUR	0.00	0.00	0.00	40.97	0.00	-40.97	-40.97
NREL-Dayapar Wind	0.00	0.00	0.00	6.91	0.00	-6.91	-6.91
NTPC Rihand stage I	0.00	0.00	0.00	7.44	0.00	-7.44	-7.44
Sorang HEP (Himachal Sorang Power Pvt. Ltd.))	46.39	0.00	-46.39	7.80	0.00	-7.80	-54.19
NTPC Sipat Stage II	0.00	0.00	0.00	7.80	0.00	-7.80	-7.80
MAHAN ENERGEN LIMITED U#2	252.23	0.61	-251.62	64.27	0.00	-64.27	-315.89
NTPC Farakka stage III	0.00	0.00	0.00	11.07	0.00	-11.07	-11.07
NTPC Vindhyachal Stage I	0.00	0.00	0.00	6.00	0.00	-6.00	-6.00
NTPC Lara Stage I	0.00	0.00	0.00	9.10	0.00	-9.10	-9.10
NTPC Vindhyachal Stage III	0.00	0.00	0.00	5.42	0.00	-5.42	-5.42
NTPC Vindhyachal Stage II	0.00	0.00	0.00	5.42	0.00	-5.42	-5.42
ADANI WIND ENERGY KUTCHH FOUR Ltd. Nakhatrana	6.16	0.00	-6.16	44.92	0.00	-44.92	-51.09
ReNew Surya Ravi Private Limited	2.99	0.00	-2.99	44.78	0.00	-44.78	-47.76
Transition Green Energy Private Limited	0.00	0.00	0.00	24.97	0.00	-24.97	-24.97
NTPC KUDGI	0.00	0.00	0.00	6.61	0.00	-6.61	-6.61
NTPC Ramagundam Stage I &II	0.00	0.00	0.00	5.91	0.00	-5.91	-5.91
KAMENG HYDRO POWER STATION	113.87	0.00	-113.87	5.29	0.00	-5.29	-119.16
BHARAT ALUMINIUM COMPANY LTD	0.00	0.00	0.00	5.92	0.00	-5.92	-5.92
NTPC khargone	0.00	0.00	0.00	5.58	0.00	-5.58	-5.58
Adani Green Energy Twenty Five B Limited_infirm	11.21	0.00	-11.21	94.19	0.00	-94.19	-105.40
NTPC Unchahar Stage IV	0.00	0.00	0.00	10.99	0.00	-10.99	-10.99
NLC INDIA LIMITED THERMAL POWER STATION II STAGE II	0.00	0.00	0.00	4.79	0.00	-4.79	-4.79
IGSTPS JHAJJAR	126.58	0.00	-126.58	14.78	0.00	-14.78	-141.36

NTPC Simhadri Stage II	0.00	0.00	0.00	8.27	0.00	-8.27	-8.27
Grian Energy Private Limited	0.00	0.00	0.00	13.88	0.00	-13.88	-13.88
Bongaigaon Thermal Power Station NTPC	0.00	0.00	0.00	9.88	0.00	-9.88	-9.88
NLC INDIA LIMITED THERMAL POWER STATION II STAGE I	0.00	0.00	0.00	4.04	0.00	-4.04	-4.04
NTPC Vindhyachal Stage V	0.00	0.00	0.00	3.93	0.00	-3.93	-3.93
Amplus Ages Private Limited	0.00	0.00	0.00	9.16	0.00	-9.16	-9.16
NLC INDIA LIMITED THERMAL POWER STATION I EXPANSION	0.00	0.00	0.00	3.95	0.00	-3.95	-3.95
VENA ENERGY VIDYUTH PRIVATE LIMITED_INFIRM	0.00	0.00	0.00	7.24	0.00	-7.24	-7.24
RENEW SURYA OJAS PRIVATE LIMITED_INFIRM	0.00	0.00	0.00	7.54	0.00	-7.54	-7.54
Palatana Plant	0.00	0.00	0.00	18.18	0.00	-18.18	-18.18
Onevolt Energy Private Limited	0.00	0.00	0.00	9.53	0.00	-9.53	-9.53
Transition Energy Services Private Limited	0.00	0.00	0.00	16.13	0.00	-16.13	-16.13
ADHUNIK POWER & NATURAL RESOURCES LIMITED	0.00	0.00	0.00	3.47	0.00	-3.47	-3.47
SEIL Energy India Limited Project II	15.73	0.00	-15.73	11.32	0.00	-11.32	-27.05
NTPC BARH Stage I	0.00	0.00	0.00	8.69	0.00	-8.69	-8.69
OSTRO KANNADA POWER PRIVATE LIMITED	13.83	0.00	-13.83	20.97	0.00	-20.97	-34.80
IND BARATH ENERGY UTKAL LIMITED	114.06	16.17	-97.89	23.14	0.00	-23.14	-121.03
NTPP BRBCL	0.00	0.00	0.00	7.86	0.00	-7.86	-7.86
NTPC Unchahar Stage I	0.00	0.00	0.00	7.46	0.00	-7.46	-7.46
NTPC Korba Stage III	0.00	0.00	0.00	3.91	0.00	-3.91	-3.91
NTPC Unchahar Stage II	0.00	0.00	0.00	6.79	0.00	-6.79	-6.79
GMR Warora Energy Limited	1.81	0.00	-1.81	10.17	0.00	-10.17	-11.98
NTPC Mouda Stage I	0.00	0.00	0.00	2.80	0.00	-2.80	-2.80
Serentica Renewables India 1 Private Limited	23.03	0.00	-23.03	2.48	0.00	-2.48	-25.51
NTPC Dadri Stage II	0.00	0.00	0.00	6.59	0.00	-6.59	-6.59
R.K.M POWERGEN PRIVATE LIMITED	6.76	0.00	-6.76	5.68	0.00	-5.68	-12.44
NTPC Dadri Stage I	0.00	0.00	0.00	5.80	0.00	-5.80	-5.80
NTECL VALLUR	0.00	0.00	0.00	2.19	0.00	-2.19	-2.19
Serentica Renewables India 4 Private Limited	0.00	0.00	0.00	2.35	0.00	-2.35	-2.35
ADANI GREEN ENERGY TWENTY FIVE LIMITED_infirm	0.00	0.00	0.00	22.39	0.00	-22.39	-22.39
NTPC Solapur	0.00	0.00	0.00	4.02	0.00	-4.02	-4.02
ASSAM GAS BASED POWER STATION	0.00	0.00	0.00	1.88	0.00	-1.88	-1.88
KANTI BIJLEE UTPADAN NIGAM LIMITED	0.00	0.00	0.00	23.32	0.00	-23.32	-23.32
NTPC Simhadri Stage I	0.00	0.00	0.00	1.76	0.00	-1.76	-1.76
ADANI SOLAR ENERGY RJ TWO PRIVATE LIMITED	0.00	0.00	0.00	41.96	0.00	-41.96	-41.96
NTPC Ramagundam Stage III	0.00	0.00	0.00	1.89	0.00	-1.89	-1.89
Amp Energy Green Six Private Limited	0.00	0.00	0.00	24.78	0.00	-24.78	-24.78
Nikachhu Hydropower Project	0.00	0.00	0.00	18.78	0.00	-18.78	-18.78
NTPC Mouda Stage II	0.00	0.00	0.00	1.46	0.00	-1.46	-1.46
NLC INDIA LIMITED THERMAL POWER STATION II EXPANSION	0.00	0.00	0.00	1.27	0.00	-1.27	-1.27
Basochhu Hydropower Plant Bhutan	0.00	0.00	0.00	32.45	0.00	-32.45	-32.45
RENEW SURYA PRATAP PRIVATE LIMITED	0.00	0.00	0.00	41.82	0.00	-41.82	-41.82
Tashiding HEP, Shiga Energy Private Limited	0.00	0.00	0.00	1.12	0.00	-1.12	-1.12
TPSL Banderwala SECI 100_INF	17.10	0.00	-17.10	3.59	0.00	-3.59	-20.69
JORETHANG LOOP HEP, DANS ENERGY PRIVATE LIMITED	0.00	0.00	0.00	1.07	0.00	-1.07	-1.07
Adept Renewable Technologies Private Limited	0.00	0.00	0.00	27.89	0.00	-27.89	-27.89
SEMBCORP GREEN INFRA PRIVATE LIMITED (INFIRM)	0.00	0.00	0.00	1.65	0.00	-1.65	-1.65
IL&FS TAMIL NADU POWER COMPANY LIMITED	0.00	1.24	1.24	5.05	0.00	-5.05	-3.81
DGEN MEGA POWER PROJECT	3.68	0.00	-3.68	17.25	0.00	-17.25	-20.93
Maruti Clean Coal and Power Limited	0.00	0.00	0.00	14.20	0.00	-14.20	-14.20
Jaypee Nigrie Super Thermal Power Plant	139.79	0.00	-139.79	38.49	0.00	-38.49	-178.28
ADANI SOLAR ENERGY JAISALMER TWO PRIVATE LIMITED(Project-2)	0.00	0.00	0.00	25.31	0.00	-25.31	-25.31
NTPC Talcher Stage I	0.00	0.00	0.00	7.21	0.00	-7.21	-7.21
AGARTALA GAS BASED POWER STATION	0.00	0.00	0.00	0.47	0.00	-0.47	-0.47
Ayana Renewable Power Three Private Limited Infirm	0.84	0.00	-0.84	10.86	0.00	-10.86	-11.70

VENA ENERGY VIDYUTH PRIVATE LIMITED_SOLAR_INFIRM	0.00	0.00	0.00	0.84	0.00	-0.84	-0.84
Jindal India Thermal Power Limited	164.21	0.00	-164.21	202.30	0.00	-202.30	-366.51
WIND FIVE RENERGY LIMITED	1.10	0.00	-1.10	8.52	0.00	-8.52	-9.63
GMR KAMALANGA ENERGY LTD-CTU	0.00	0.00	0.00	2.02	0.00	-2.02	-2.02
NTPC Unchahar Stage III	0.00	0.00	0.00	0.58	0.00	-0.58	-0.58
RENEW SURYA ROSHNI PRIVATE LIMITED-Fatehgarh-III PS	0.00	0.00	0.00	0.30	0.00	-0.30	-0.30
ADANI SOLAR ENERGY JODHPUR TWO LIMITED	0.04	0.00	-0.04	9.04	0.00	-9.04	-9.08
COASTAL ENERGEN PRIVATE LIMITED	233.22	100.80	-132.42	0.75	0.00	-0.75	-133.17
ADANI RENEWABLE ENERGY FIFTY FIVE LIMITED_PSS3_infirm (162.5 MW Hybrid Solar of 187.5MW HPD)	0.00	0.00	0.00	21.63	0.00	-21.63	-21.63
Serentica Renewables India 1 Private Limited- Koppal (Infirm)	0.00	0.00	0.00	0.14	0.00	-0.14	-0.14
DHARIWAL STU OTH	0.00	0.00	0.00	1.23	0.00	-1.23	-1.23
CONTINUUM POWER TRADING (TN) PRIVATE LIMITED	0.00	0.00	0.00	2.53	0.00	-2.53	-2.53
NTPC SAIL POWER COMPANY LIMITED	0.00	0.00	0.00	0.12	0.00	-0.12	-0.12
Nani Virani Wind Energy Private Limited	0.00	0.00	0.00	0.62	0.00	-0.62	-0.62
TPSL 200MW TPTCL Banderwala	8.81	0.00	-8.81	18.23	0.00	-18.23	-27.04
Adani Green Energy Twenty Six B Limited_infirm	0.00	0.00	0.00	22.21	0.00	-22.21	-22.21
Chuzachen HEP	0.00	0.00	0.00	0.04	0.00	-0.04	-0.04
Dhariwal ISTS	0.00	0.00	0.00	0.71	0.00	-0.71	-0.71
Adani Green Energy Twenty Five A Limited_Infirm	0.00	0.00	0.00	17.00	0.00	-17.00	-17.00
NTPC SOLAPUR SOLAR PV Station	1.34	0.00	-1.34	0.01	0.00	-0.01	-1.36
ADANI SOLAR ENERGY RJ TWO PRIVATE LIMITED (infirm)	0.00	0.00	0.00	3.30	0.00	-3.30	-3.30
ADANI GREEN ENERGY TWENTY SIX A LTD._infirm	0.00	0.00	0.00	0.47	0.00	-0.47	-0.47
ADANI WIND ENERGY KUTCHHH FOUR Ltd. Nakhatrana (infirm)	0.00	0.00	0.00	6.10	0.00	-6.10	-6.10
Ramagundam Floating solar	12.25	0.00	-12.25	4.11	0.00	-4.11	-16.36
Simhadri FSP 15 MW	0.00	0.00	0.00	1.28	0.00	-1.28	-1.28
Simhadri Floating solar (10 MW)	0.00	0.00	0.00	0.68	0.00	-0.68	-0.68
DHARIWAL STU MH	150.37	0.00	-150.37	0.00	0.00	0.00	-150.37
Dudhkunda Khola Hydropower Project	6.56	0.00	-6.56	0.00	0.00	0.00	-6.56
IRCON RENEWABLE POWER LIMITED Infirm	9.52	0.00	-9.52	0.00	0.00	0.00	-9.52
JSW RENEW ENERGY LIMITED INFIRM	0.00	0.00	0.00	5.14	0.00	-5.14	-5.14
MAYA KHOLA HYDRO POWER PROJECT	8.14	0.00	-8.14	0.00	0.00	0.00	-8.14
Modi Khola Hydropower Project	8.11	0.00	-8.11	0.00	0.00	0.00	-8.11
NEA - Bihar STU	13.31	0.00	-13.31	0.00	0.00	0.00	-13.31
NEA - UP STU	0.00	3.34	3.34	0.00	0.00	0.00	3.34
NEA Likhu-2 Hydropower Project	35.48	0.00	-35.48	0.00	0.00	0.00	-35.48
NEA Nepal Solu Khola (Dudhkoshi) Hydropower Project	2.08	0.00	-2.08	0.00	0.00	0.00	-2.08
Kawas	0.41	0.00	-0.41	0.00	0.65	0.65	0.24
SEMBCORP ENERGY INDIA LIMITED	120.64	0.00	-120.64	0.00	0.00	0.00	-120.64
Sembcorp Energy India Limited Project II	13.57	0.00	-13.57	0.00	0.00	0.00	-13.57
TANAKPUR POWER STATION	3.34	0.00	-3.34	0.00	0.00	0.00	-3.34
<i>Source: NLDC</i>							
<i>* in case of a state, the entities which are "selling" also include generators connected to state grid and the entities which are "buying" also include open access consumers.</i>							
<i>** (-) indicates sale and (+) indicates purchase,</i>							
<i>*** Total net includes net of transactions through bilateral and power exchanges</i>							



**Table-33: VOLUME AND CHARGES UNDER DSM (DAY-WISE), SEPTEMBER 2024**

Date	Volume (MU)	All India Grid Charges (₹/kWh)		
		Minimum	Maximum	Average
1-Sep-24	96.99	0.50	10.00	3.34
2-Sep-24	108.15	1.00	10.00	4.70
3-Sep-24	121.46	0.98	10.00	4.58
4-Sep-24	102.73	0.98	10.00	4.64
5-Sep-24	92.67	1.10	10.00	4.12
6-Sep-24	99.80	1.00	10.00	4.07
7-Sep-24	95.19	1.00	10.00	3.78
8-Sep-24	92.05	0.53	10.00	3.06
9-Sep-24	79.66	1.70	10.00	3.98
10-Sep-24	88.49	1.50	10.00	3.60
11-Sep-24	89.63	1.35	10.00	3.79
12-Sep-24	85.27	1.33	10.00	3.92
13-Sep-24	90.79	1.22	10.00	3.34
14-Sep-24	92.50	1.35	10.00	3.60
15-Sep-24	92.07	0.79	10.00	2.92
16-Sep-24	86.62	2.17	11.05	4.38
17-Sep-24	83.59	2.52	10.00	4.11
18-Sep-24	87.99	2.77	14.37	5.68
19-Sep-24	87.06	2.28	11.15	5.98
20-Sep-24	86.76	3.30	12.20	6.60
21-Sep-24	87.64	3.22	11.18	7.04
22-Sep-24	81.88	2.77	14.09	6.31
23-Sep-24	83.49	3.96	11.23	7.18
24-Sep-24	90.27	4.55	11.43	7.60
25-Sep-24	94.44	2.13	10.39	6.55
26-Sep-24	96.94	2.07	10.00	5.54
27-Sep-24	94.96	2.66	10.00	5.02
28-Sep-24	103.20	2.78	10.42	5.24
29-Sep-24	86.09	2.40	10.00	4.44
30-Sep-24	83.96	3.25	10.35	6.35
<b>Total</b>	<b>2762.34</b>	<b>0.50<sup>#</sup></b>	<b>14.37<sup>#</sup></b>	<b>4.85</b>

Source: NLDC

<sup>#</sup> Maximum/Minimum in the month

**Table-34: VOLUME OF ELECTRICITY UNDER DRAWAL/ OVER INJECTION (EXPORTED) UNDER DSM, SEPTEMBER 2024**

<b>Name of the Entity</b>	<b>Volume (MU)</b>	<b>% of Volume</b>
Punjab	143.57	5.66
Madhya Pradesh	110.72	4.36
Gujarat	100.15	3.95
Rajasthan	94.16	3.71
Maharashtra	69.41	2.74
Uttar Pradesh	69.28	2.73
Telangana	65.91	2.60
Haryana	65.54	2.58
Tamil Nadu	58.00	2.29
Andhra Pradesh	57.02	2.25
Chattisgarh	52.54	2.07
Karnataka	51.61	2.03
NTPC_KUDGI	44.67	1.76
Delhi	39.68	1.56
Ramagundam	33.32	1.31
JHARKHAND Beneficiary	32.13	1.27
Himachal Pradesh	29.40	1.16
Uttarakhand	28.88	1.14
NEPAL_NVVN	27.78	1.09
Jammu & Kashmir	27.18	1.07
DVC Beneficiary	24.90	0.98
Odisha	23.69	0.93
NTPC Solapur Thermal Power Station Stage-1	23.14	0.91
Bihar	22.45	0.88
DADRI TPS#1	20.97	0.83
Sasan Ultra Mega Power Project	20.44	0.81
ADANI RENEWABLE ENERGY HOLDING FOUR LIMITED	19.65	0.77
Telangana super thermal power plant	19.24	0.76
TP Saurya Unit-2	17.85	0.70
IGSTPS JHAJJAR	15.85	0.62
Nepal	15.65	0.62
West Bengal	15.05	0.59
ARCELORMITTAL NIPPON STEEL INDIA LTD. Beneficiary	14.49	0.57
DADRI TPS#2	14.45	0.57
Jindal Power Ltd. Stage-2	14.13	0.56
NAPTHA JHAKRI HEP	13.84	0.55
Karacham Wangtoo	12.22	0.48
NTPC Khargone Super Thermal Power Plant	11.56	0.46
Railways	11.51	0.45
Rampur Hydro	10.95	0.43
Adani Green Energy Ltd	10.91	0.43
Adani Solar Energy Jaisalmer Four Private Limited SOLAR	10.60	0.42
Adani Solar Energy Jaisalmer One Private Limited WIND	10.49	0.41
URI	10.24	0.40
Tuticorin_JSWRenew_W_Infirm	9.69	0.38
ReNew Surya Roshni Pvt Ltd	9.54	0.38
Assam	9.52	0.38
Simhardi Stage-2	9.38	0.37
Pondichery	9.30	0.37
ADANI RENEWABLE ENERGY HOLDING FOUR LIMITED	9.17	0.36
Girel, Tuticorin	9.07	0.36
Kolayat Solar Power Plant	9.06	0.36
UNCHA HAR 2	9.01	0.36
HIRIYUR_OSTROKANNADA	8.95	0.35
NPCIL Kakrapar Atomic Power Plant	8.80	0.35
Simhardi Stage-1	8.72	0.34
NEW NEYVELI THERMAL POWER PALNT	8.70	0.34
Adani Wind Energy MP One Private Limited	8.45	0.33
Orange, Tuticorin	8.33	0.33
AYANA RENEWABLE POWER SIX PRIVATE LIMITED	8.18	0.32
Jindal Power Ltd.	8.03	0.32
JPNIGRIE (JNSTPP)	7.79	0.31
Ramagundam stage 3	7.65	0.30
Betam, Tuticorin	7.64	0.30
ReNew Surya Ojas Private Limited koppal	7.64	0.30
Mytrah, Tuticorin	7.60	0.30
TANDA STAGE #2	7.59	0.30

URI Stage 2	7.49	0.30
Azure Power Forty Three Private Limited	7.44	0.29
Assam Gas Based Power Plant(Kathalguri)	7.06	0.28
JSW RENEW ENERGY LIMITED	6.95	0.27
JSW Renew Energy Limited Savalaperi infirm	6.95	0.27
BARH I	6.86	0.27
NTPC Mauda Super Thermal Power Station	6.78	0.27
BHAKRA	6.70	0.26
Dadar & Nagar Haveli, Daman & Diu	6.66	0.26
UNCHAHAHAR 4	6.63	0.26
Chandigarh	6.48	0.26
Mizoram	6.46	0.25
Adani Wind Energy Kutchh Four Ltd, Nakhatrana and Dedhiya	6.39	0.25
Sitac Kabini Renewables Pvt. Ltd.	6.30	0.25
NLC Tamli Nadu Power Ltd	6.28	0.25
PVG_Tata Power Renewable Energy Limited	6.28	0.25
Talcher stage 2	6.23	0.25
Ayana Renewable Power One Private Limited	6.22	0.24
Vallur Thermal Power Station	6.05	0.24
JSW RENEW ENERGY TWO LIMITED (KARUR)	6.04	0.24
Adani Power Limited - Raipur TPP	5.97	0.24
Meghalaya	5.96	0.23
Masaya Solar Energy Private Limited	5.83	0.23
RENEW SOLAR ENERGY (JHARKHAND) PRIVATE LIMITED	5.82	0.23
OSTRO Energy Private Limited	5.73	0.23
Maithon Power Ltd.	5.73	0.23
Dehar Hydro	5.72	0.23
ADANI HYBRID ENERGY JAILSALMER TWO LTD (SOLAR ONLY)	5.68	0.22
UNCHAHAHAR 1	5.52	0.22
ADYAH SOLAR ENERGY PRIVATE LIMITED	5.46	0.22
NTPC Lara	5.40	0.21
SINGRAULI TPS	5.38	0.21
Korba Super Thermal Power Station Stage I&II	5.37	0.21
BARH	5.37	0.21
NTPC Sipat Thermal Power Station Stage-1	5.21	0.21
ReNew Sun Bright Private Limited	5.20	0.21
SALAL Hydro	5.15	0.20
Kerala	5.12	0.20
Moser Baer Power (MB Power) MP Limited	5.11	0.20
Adani Wind ENergy Kutchh One Limited	5.10	0.20
Koteshwar hps	5.04	0.20
Altra Xergi Power Private Limited	5.03	0.20
TANAKPUR	4.96	0.20
RKM Power	4.94	0.19
NSPCL	4.70	0.19
NABINAGAR STPP (NPGC)	4.69	0.19
Eden Renewable Cite Private Limited	4.69	0.18
ReNew Surya Roshni Pvt Ltd	4.68	0.18
ADANI HYBRID ENERGY JAILSALMER ONE LTD (SOLAR ONLY)	4.62	0.18
Thar Surya 1 Private Limited	4.62	0.18
NVVN Bhutan	4.61	0.18
RENEW SURYA RAVI	4.61	0.18
NLCII Stage 1	4.50	0.18
LANCO AMARKANTAK	4.47	0.18
Renew Power Limited SECI-II	4.40	0.17
Ananthapuramu (Sprng) Ultra Mega Solar Park	4.40	0.17
Green Infra Wind Energy Limited SECI-III Vadva	4.33	0.17
Adani Power Limited - Raigarh TPP	4.32	0.17
Alfanar Energy Private Limited	4.32	0.17
Avaada Sunce Energy Private Limited	4.23	0.17
Renew Surya Aayan Private Limited	4.23	0.17
BALCO_CTU	4.21	0.17
NLCII Stage 2	4.21	0.17
ADANI HYBRID ENERGY JAILSALMER THREE LTD (SOLAR ONLY)	4.20	0.17
Chamera 1	4.17	0.16
Green Infra Wind Energy Limited SECI-II Vadva	4.17	0.16
Nepal	4.15	0.16
Avaada Sunrays Energy Private Limited	4.15	0.16
DULHASTI Hydro power	4.09	0.16
MAHAN ENERGEN LIMITED	4.06	0.16

ABC RENEWABLE ENERGY PRIVATE LIMITED	4.03	0.16
Serentica Renewables India 4 Private Limited	3.94	0.16
Avikiran Solar India Private Ltd.	3.91	0.15
ACME Heergarh Powertech Private Limited	3.89	0.15
Azure Power Forty One Private Limited	3.88	0.15
NTPC Rihand stage 2	3.84	0.15
Fortum Solar	3.83	0.15
Darlipali Super Thermal Power Station	3.78	0.15
Manipur	3.74	0.15
NTPC Mauda Super Thermal Power Station Stage 2	3.69	0.15
Adani NPKUNTA_SOLAR	3.64	0.14
INOX GREEN ENERGY SERVICES LIMITED	3.63	0.14
Mega Solis Renewables Private Limited	3.62	0.14
Apraava Energy Private Limited (AEPL)	3.57	0.14
Semcorp Energy India Limited_Project-2(SGPL)	3.57	0.14
Tehri Hydro	3.53	0.14
Arinsun Clean Energy Private Ltd	3.52	0.14
ReNew Solar Urja Pvt Ltd	3.52	0.14
Avaada Sustainable RJProject Private Limited	3.46	0.14
RAP-B	3.45	0.14
Goa	3.41	0.13
BRBCL_NABINAGAR	3.40	0.13
NAPP	3.38	0.13
Ayana, NPKUNTA	3.37	0.13
PALATANA	3.31	0.13
Semcorp Energy India Limited_Project-2(SGPL)	3.26	0.13
ADANI HYBRID WIND ENERGY JAILSALMER ONE LTD	3.24	0.13
Bongaigaon TPP(NTPC)	3.23	0.13
Renew Solar Power Private Limited Bikaner	3.22	0.13
AVAADA SUNSHINE ENERGY PRIVATE LIMITED	3.21	0.13
Rihand Stage 3	3.19	0.13
NTPC Vindhyachal Super Thermal Power Station Stage I	3.14	0.12
NTPC Farakka	3.11	0.12
Avaada RJHN Private Limited	3.10	0.12
NTPC Vindhyachal Super Thermal Power Station Stage 4	3.09	0.12
NLC Expansion	3.08	0.12
Serentica Renewables India 1 Private Limited	3.04	0.12
Azure Power Maple Private Limited	3.04	0.12
Clean Solar Power (bhadla) Pvt. Ltd	3.02	0.12
GRT Jewellers (India) Private Limited_GRTJIPL	3.01	0.12
Baba Atomic research Centre	3.01	0.12
NTPC Vindhyachal Super Thermal Power Station Stage 5	2.99	0.12
NTPC Vindhyachal Super Thermal Power Station Stage 2	2.98	0.12
Jindal Steel & power Ltd. (Dangamahua CPP)	2.98	0.12
Renew Sun wave Pvt. Ltd. Fatehgarh2	2.96	0.12
Clean Solar Power (bhadla) Pvt. Ltd	2.96	0.12
Ratnagiri Gas and Power PVT Limited	2.95	0.12
DP Power	2.91	0.11
NTPC ETTAYAPURAM SOLAR PLANT	2.90	0.11
NTPC, NPKunta	2.89	0.11
NTPC Gadarwara Super Thermal Power Plant Stage-I	2.88	0.11
Mahindra Renewables Pvt Ltd.	2.87	0.11
BEEMPOW ENERGY PRIVATE LIMITED	2.82	0.11
DEVIKOT SOLAR	2.75	0.11
ADANI HYBRID ENERGY JAILSALMER THREE LTD (Wind ONLY)	2.72	0.11
Bairasuil Hydro Power	2.69	0.11
Arunachal Pradesh	2.68	0.11
NTPC RAMAGUNDAM FLOATING SOLAR PLANT	2.67	0.11
GMR Warora Energy Ltd.	2.65	0.10
NTPC North Karanpura STPS	2.64	0.10
ELECTRO SOLAIRE PVT. LTD.	2.64	0.10
Nagaland	2.59	0.10
Jhabua	2.58	0.10
ADANI SOLAR ENERGY KA NINE PRIVATE LIMITED	2.58	0.10
NTPC Vindhyachal Super Thermal Power Station Stage 3	2.58	0.10
Mega Suryaaurja Pvt Ltd	2.58	0.10
Sipat Stage 2	2.55	0.10
TATA POWER RENEWABLE ENERGY LIMITED	2.54	0.10
Tripura	2.53	0.10
RENEW SURYA PRATAP	2.52	0.10

ADANI HYBRID ENERGY JAILSALMER TWO LTD wind	2.44	0.10
Athena Jaipur Solar Power Pvt. Ltd.	2.40	0.09
Parbati 3	2.38	0.09
Transition Green Energy Private Limited	2.33	0.09
Adani Solar Energy Jaisalmer One Private Limited	2.33	0.09
RISING SUN ENENRGY PVT LIMITED	2.32	0.09
TATA POWER GREEN Energy Limited	2.31	0.09
Singoli Bhatwari HEP	2.25	0.09
SKS Power	2.23	0.09
Adani Solar Energy Jaisalmer Two Private Limited (Project-2)	2.22	0.09
Kameng HEP	2.22	0.09
DHAULGANGA HEP	2.21	0.09
Nokhra Solar	2.21	0.09
Adani Solar Energy Jaisalmer Five Private Limited	2.18	0.09
Kahalgaon stage 2	2.14	0.08
Avaada Solar, Pavagada	2.10	0.08
Adani Renewable (RJ) Ltd	2.10	0.08
Chamera 2	2.10	0.08
Avaada solarize	2.05	0.08
Azure Power Pavagada	2.04	0.08
KSK mahanadi	2.02	0.08
Farakka stage 3	2.01	0.08
Adani Solar Energy Jaisalmer Two Private Limited, bhadla	1.98	0.08
SIMHAPURI(SEPL)	1.94	0.08
Mejia Thermal Power station stage 2	1.92	0.08
PARAMPUJYA SOALR ENERGY PVT LTD	1.91	0.08
Azure Solar	1.91	0.08
Rihand Stage 1	1.89	0.07
Goa	1.84	0.07
Srijan Energy	1.83	0.07
Talcher stage 1	1.81	0.07
Meenakshi Energy Limited	1.77	0.07
Chamera 3	1.74	0.07
Pong Hydro Power	1.73	0.07
Renew Surya Vihaan Private Limited	1.70	0.07
Renew Surya Vihaan Private Limited	1.70	0.07
Rongnichu Hydro Electric Project	1.67	0.07
AD hydro power	1.65	0.07
Netra Wind Private Limited	1.63	0.06
TATA, Npkunta	1.61	0.06
TRN Energy	1.56	0.06
Korba Super Thermal Power Station Stage III	1.52	0.06
ILFS	1.50	0.06
Gujarat State Electricity Corporation Limited, Radhanesda	1.45	0.06
TPSL Banderwala	1.45	0.06
Torrent Solargen Ltd (Torrent Power Ltd)	1.45	0.06
NTPC Kawas Gas Plant	1.44	0.06
Adani Solar Energy Jaisalmer Two Private Limited	1.42	0.06
Fortum finsurya	1.37	0.05
Koldam Hydro Power	1.36	0.05
AMP Energy Green Six Private Limited	1.34	0.05
Agartala Gas Turbine Power Plant	1.33	0.05
Kishanganga HEP	1.30	0.05
AMP Energy Green Five Private Limited	1.30	0.05
BALCO	1.28	0.05
GUJARAT INDUSTRIES POWER COMPANY LTD	1.27	0.05
SJVN	1.22	0.05
Transition Energy	1.21	0.05
GADAG_VENA_S	1.21	0.05
ACME Chittorgarh Solar Energy Private Limited	1.21	0.05
Jindal India Thermal Power Ltd.	1.20	0.05
Railways ER	1.20	0.05
Bangladesh	1.16	0.05
Adani Solar Energy Jaisalmer Two Private Limited Solar	1.14	0.04
Ranganadi HEP	1.12	0.04
TATA POWER RENEWABLE ENERGY LTD, Radhanesda	1.09	0.04
Gujarat State Electricity Corporation Limited phase-2	1.08	0.04
Sorang HEP	1.08	0.04
Grian Energy Private Limited	1.07	0.04
NLCTSII EXPANSION 2	1.03	0.04
Unchahar stage 3	1.02	0.04

Sainj Hydro Power	1.01	0.04
TP Saurya	1.00	0.04
GMR Kamalanga Energy Ltd.	1.00	0.04
ReNew Wind Energy (AP2) Private Limited	1.00	0.04
Adept Renewable Technologies Private Limited	0.99	0.04
Sewa 2 Hydro Power	0.98	0.04
SIKKIM Beneficiary	0.95	0.04
Powerica	0.95	0.04
Adhunik Power & Natural Resources Ltd	0.92	0.04
IRCON RENEWABLE POWER LIMITED_PAVAGADA	0.92	0.04
JSW RENEW ENERGY LIMITED	0.91	0.04
Athena Bhiwadi Solar Power Pvt. Ltd	0.89	0.04
KREDL, Pavagada	0.87	0.03
Athena Karnal Solar Power Pvt. Ltd	0.86	0.03
PVG_AMPLUS_PAVAGADA	0.85	0.03
INDIGRID SOLAR-II (AP) PRIVATE LIMITED	0.84	0.03
Kahalgaon stage 1	0.81	0.03
PVG_AMPLUS_TUMKUR	0.80	0.03
Renew Power pavagada	0.79	0.03
AMPLUS Pavagada	0.78	0.03
ReNew Solar Power Private Limited	0.75	0.03
Athena Hisar Solar Power Pvt. Ltd	0.74	0.03
Sherisha Rooftop Solar SPV Four Private Limited	0.72	0.03
Chuzachen	0.72	0.03
JSW Energy Utkal Ltd	0.70	0.03
Kopili HEP	0.69	0.03
INDIGRID SOLAR-I (AP) PRIVATE LIMITED	0.68	0.03
Pare_HEP	0.68	0.03
Shree Cement Ltd	0.66	0.03
NTPC Jhanor-Gandhar Gas Power plant	0.64	0.03
Jorethang Loop Hydro Electric Project	0.64	0.03
Loktak HEP	0.61	0.02
ACB (India) Ltd.	0.61	0.02
RAP-C	0.60	0.02
COASTAL ENERGEN PVT LTD	0.58	0.02
TPCL Mundra Thermal Power Station (formerly CGPL)	0.57	0.02
Azure Npkunta	0.57	0.02
DGEN Mega Power Project	0.56	0.02
Yarrow, Pavagada	0.56	0.02
Powergrid HVDC	0.52	0.02
Lanco Budhil	0.49	0.02
NTPC Kawas Solar	0.49	0.02
ANTA_SOLAR	0.49	0.02
Gandhar Solar	0.42	0.02
Simhadari Floating Solar	0.41	0.02
Adani Solar Energy Four Private Limited	0.41	0.02
One Volt Energy Private Limited	0.36	0.01
Dhariwal Infrastructure	0.36	0.01
RENEW SURYA OJAS PVT LIMITED	0.35	0.01
Doyang HEP	0.31	0.01
Spring, Pugalur	0.28	0.01
ADANI SOLAR ENERGY RJ TWO PRIVATE LIMITED_INF	0.28	0.01
SEBFCORP GREEN INFRA PRIVATE LIMITED (INFIRM)	0.25	0.01
Unchahar Solar	0.25	0.01
RANGIT	0.24	0.01
Auraiya Solar	0.23	0.01
Singrauli Solar	0.19	0.01
Tashiding Hydro Power	0.18	0.01
NFL	0.17	0.01
Kopili-2 HEP	0.17	0.01
Talcher Solar	0.11	0.004
Dadri Solar	0.06	0.002
Power grid HVDC	0.06	0.002
Powergrid HVDC	0.03	0.001
Serentica Renewables India 1 Private Limited- Koppal (Infirm)	0.03	0.001
AM Green Energy Private Limited Wind_Infirm	0.004	0.0002
<b>Total</b>	<b>2537.08</b>	<b>100.00</b>
<b>Volume Exported by top 5 Regional Entities</b>	<b>518.01</b>	<b>20.42</b>

Source: NLDC

**Table-35: VOLUME OF ELECTRICITY OVER DRAWAL/ UNDER INJECTION (IMPORTED) UNDER DSM, SEPTEMBER 2024**

<b>Name of the Entity</b>	<b>Volume (MU)</b>	<b>% of Volume</b>
MAHAN ENERGEN LIMITED	140.71	4.71
Tamil Nadu	128.97	4.32
Maharashtra	113.52	3.80
Uttar Pradesh	101.98	3.41
Rajasthan	85.65	2.87
Jammu & Kashmir	73.72	2.47
Karnataka	69.83	2.34
Bihar	68.04	2.28
Gujarat	59.85	2.00
Haryana	59.23	1.98
West Bengal	58.81	1.97
Odisha	52.11	1.74
Telangana	44.66	1.49
Andhra Pradesh	39.92	1.34
DVC Beneficiary	34.26	1.15
Spring, Pugalur	32.81	1.10
JHARKHAND Beneficiary	28.69	0.96
Adani Wind ENergy Kutchh One Limited	28.27	0.95
JSW Energy Utkal Ltd	27.06	0.91
Kerala	25.60	0.86
Assam	25.56	0.86
SINGRAULI TPS	25.09	0.84
ARCELORMITTAL NIPPON STEEL INDIA LTD. Beneficiary	22.61	0.76
Madhya Pradesh	22.05	0.74
TANDA STAGE #2	21.36	0.72
Adani Solar Energy Jaisalmer One Private Limited WIND	21.22	0.71
Kahalgaon stage 1	21.17	0.71
TelanganaSTPP	20.56	0.69
Ramagundam	19.14	0.64
Chhattisgarh	19.07	0.64
Kahalgaon stage 2	17.63	0.59
Punjab	17.49	0.59
JSW RENEW ENERGY TWO LTD	17.36	0.58
NEPAL_NVVN	17.19	0.58
INOX GREEN ENERGY SERVICES LIMITED	17.08	0.57
Uttarakhand	17.01	0.57
BARH I	16.57	0.55
NABINAGAR STPP (NPGC)	16.53	0.55
NVVN Bhutan	16.42	0.55
ANTA_SOLAR	15.81	0.53
Vallur	15.73	0.53
Adani Wind Energy MP One Private Limited	15.61	0.52
NTPC Sipat Thermal Power Station Stage-1	15.55	0.52
IGSTPS JHAJJAR	15.40	0.52
ADANI RENEWABLE ENERGY HOLDING FOUR LIMITED	15.20	0.51
NTPC Gadarwara Super Thermal Power Plant Stage-1	14.93	0.50
RENEW SURYA OJAS PVT LIMITED_WIND	14.77	0.49
HIRIYUR_OSTROKANNADA	14.37	0.48
Delhi	14.17	0.47
BARH	14.12	0.47
AYANA RENEWABLE POWER SIX PRIVATE LIMITED	13.99	0.47
NTPC Khar gone Super Thermal Power Plant	13.78	0.46
RIHAND 3	13.75	0.46
Simhardi Stage-1	12.67	0.42
Adani Solar Energy Jaisalmer Four Private Limited SOLAR	12.61	0.42
RIHAND 2	11.99	0.40
ReNew Surya Roshni Pvt Ltd	11.80	0.39
Simhadri Stage 2	11.64	0.39
Tripura	11.60	0.39
Girel, Tuticorin	11.44	0.38
ADANI RENEWABLE ENERGY HOLDING FOUR LIMITED	11.34	0.38
OSTRO Energy Private Limited	11.30	0.38
Renew Power Limited SECI-II	10.93	0.37
Adani Wind Energy Kutchh Four Ltd, Nakhatrana and Dedhiya	10.56	0.35
Talcher stg 2	10.50	0.35
ADANI HYBRID WIND ENERGY JAILSALMER ONE LTD	10.46	0.35
BEEMPOW ENERGY PRIVATE LIMITED	10.34	0.35
NTPC Mauda Super Thermal Power Station	10.30	0.34

NTPC Solapur Thermal Power Station Stage-1	10.23	0.34
Alfanar Energy Private Limited	10.13	0.34
NTPC North Karanpura STPS	9.86	0.33
NTPC Farakka	9.80	0.33
Mytrah, Tuticorin	9.66	0.32
Adani Green Energy Ltd	8.92	0.30
Apraava Energy Private Limited (AEPL)	8.82	0.30
NPCIL Kakrapar Atomic Power Plant	8.60	0.29
JSW RENEW ENERGY LIMITED	8.53	0.29
JSW Renew Energy Limited Savalaperi infirm	8.53	0.29
Chandigarh	8.52	0.29
Moser Baer Power (MB Power) MP Limited	8.48	0.28
KUDGI	8.44	0.28
TPCL Mundra Thermal Power Station (formerly CGPL)	8.41	0.28
Sitac Kabini Renewables Pvt. Ltd.	8.35	0.28
NTPC Mauda Super Thermal Power Station Stage 2	8.31	0.28
RIHAND 1	8.30	0.28
Semcorp Energy India Limited_Project-2(SGPL)	8.29	0.28
BALCO_CTU	8.16	0.27
Green Infra Wind Energy Limited SECI-II Vadva	8.11	0.27
DADRI TPS#2	8.07	0.27
Arunachal Pradesh	8.06	0.27
Athena Jaipur Solar Power Pvt. Ltd.	7.98	0.27
Jhabua	7.93	0.27
Betam, Tuticorin	7.92	0.27
Green Infra Wind Energy Limited SECI-III Vadva	7.80	0.26
NTPC Vindhyachal Super Thermal Power Station Stage 2	7.69	0.26
Goa	7.68	0.26
Netra Wind Private Limited	7.63	0.26
Sipat Stage 2	7.58	0.25
NLC Tamli Nadu Power Ltd	7.57	0.25
Orange, Tuticorin	7.57	0.25
JPNIGRIE (JNSTPP)	7.54	0.25
Masaya Solar Energy Private Limited	7.42	0.25
Mahindra Renewables Pvt Ltd.	7.41	0.25
UNCHAHAHAR 2	7.28	0.24
Azure Power Forty Three Private Limited	6.90	0.23
Jindal India Thermal Power Ltd.	6.75	0.23
ADANI HYBRID ENERGY JAILSALMER THREE LTD (Wind ONLY)	6.56	0.22
Korba Super Thermal Power Station Stage I&II	6.46	0.22
Ramagundam stage 3	6.40	0.21
UNCHAHAHAR 1	6.29	0.21
PVG_Tata Power Renewable Energy Limited	6.28	0.21
ADANI HYBRID ENERGY JAILSALMER TWO LTD wind	6.25	0.21
SIKKIM Beneficiary	6.20	0.21
Jindal Power Ltd. Stage-2	6.09	0.20
Bongaigaon TPP(NTPC)	6.09	0.20
Ayana, NPKUNTA	6.05	0.20
ReNew Wind Energy (AP2) Private Limited	5.97	0.20
DP Power	5.96	0.20
Jindal Power Ltd.	5.92	0.20
Nokhra Solar	5.90	0.20
Clean Solar Power (bhadla) Pvt. Ltd	5.77	0.19
NLCII Stage 2	5.75	0.19
ADYAH SOLAR ENERGY PRIVATE LIMITED	5.71	0.19
AVAADA SUNSHINE ENERGY PRIVATE LIMITED	5.69	0.19
Adani Solar Energy Jaisalmer One Private Limited	5.63	0.19
TATA POWER RENEWABLE ENERGY LIMITED	5.63	0.19
Arinsun Clean Energy Private Ltd	5.62	0.19
Darlipali Super Thermal Power Station	5.55	0.19
Adani NPKUNTA_SOLAR	5.51	0.18
COASTAL ENERGEN PVT LTD	5.48	0.18
NTPC ETTAYAPURAM SOLAR PLANT	5.46	0.18
ACME Chittorgarh Solar Energy Private Limited	5.44	0.18
Dadar & Nagar Haveli, Daman & Diu	5.38	0.18
Ananthapuramu (Sprng) Ultra Mega Solar Park	5.30	0.18
UNCHAHAHAR 4	5.29	0.18
NTPC Lara	5.26	0.18
Srijan Energy	5.25	0.18
ReNew Surya Roshni Pvt Ltd	5.22	0.17
ADANI HYBRID ENERGY JAILSALMER ONE LTD (SOLAR ONLY)	5.21	0.17
ADANI HYBRID ENERGY JAILSALMER THREE LTD (SOLAR ONLY)	5.21	0.17



Torrent Solargen Ltd (Torrent Power Ltd)	5.21	0.17
TP Saurya Unit-2	5.18	0.17
Tehri Hydro	5.06	0.17
NTPC Vindhyachal Super Thermal Power Station Stage I	5.06	0.17
Talcher stage 1	5.04	0.17
Altra Xergi Power Private Limited	5.00	0.17
ACB (India) Ltd.	4.97	0.17
Renew Sun wave Pvt. Ltd. Fatehgarh2	4.96	0.17
Serentica Renewables India 1 Private Limited	4.96	0.17
Avaada Sunce Energy Private Limited	4.93	0.16
Shree Cement Ltd	4.92	0.16
Adani Solar Energy Jaisalmer Two Private Limited	4.90	0.16
NTPC Vindhyachal Super Thermal Power Station Stage 3	4.86	0.16
DADRI TPS#1	4.83	0.16
Azure Power Forty One Private Limited	4.81	0.16
NTPC Vindhyachal Super Thermal Power Station Stage 4	4.76	0.16
ADANI HYBRID ENERGY JAILSALMER TWO LTD (SOLAR ONLY)	4.67	0.16
Avaada Sustainable RJProject Private Limited	4.66	0.16
NLCTSH EXPANSION 2	4.62	0.15
Bangladesh	4.58	0.15
SEILPI	4.51	0.15
TPSL Banderwala	4.50	0.15
Fortum Solar	4.48	0.15
Avaada Sunrays Energy Private Limited	4.41	0.15
BRBCL_NABINAGAR	4.33	0.14
Clean Solar Power (bhadla) Pvt. Ltd	4.33	0.14
ABC RENEWABLE ENERGY PRIVATE LIMITED	4.20	0.14
Himachal Pradesh	4.16	0.14
OneVolt Energy Private Limited	4.16	0.14
ADANI SOLAR ENERGY KA NINE PRIVATE LIMITED	4.16	0.14
Kolayat Solar Power Plant	4.15	0.14
Mega Suryaurja Pvt Ltd	4.14	0.14
Azure Power Maple Private Limited	4.05	0.14
Ayana Renewable Power One Private Limited	4.01	0.13
Thar Surya 1 Private Limited	4.01	0.13
ACME Heergarh Powertech Private Limited	3.99	0.13
RENEW SURYA RAVI	3.95	0.13
Dhariwal Infrastructure	3.94	0.13
Avikiran Solar India Private Ltd.	3.88	0.13
Adept Renewable Technologies Private Limited	3.65	0.12
Transition Green Energy Private Limited	3.64	0.12
KHURJA_STPP	3.63	0.12
URI	3.60	0.12
ReNew Solar Urja Pvt Ltd	3.59	0.12
NEW NEYVELI THERMAL POWER PALNT	3.59	0.12
ADANI SOLAR ENERGY RJ TWO PRIVATE LIMITED_INF	3.54	0.12
Sasan Ultra Mega Power Project	3.48	0.12
AMPLUS Pavagada	3.48	0.12
Renew Solar Power Private Limited Bikaner	3.48	0.12
Adani Solar Energy Jaisalmer Two Private Limited Solar	3.46	0.12
Renew Surya Aayan Private Limited	3.42	0.11
Adani Solar Energy Jaisalmer Five Private Limited	3.29	0.11
Grian Energy Private Limited	3.29	0.11
NLCII Stage 1	3.27	0.11
ELECTRO SOLAIRE PVT. LTD.	3.27	0.11
NTPC RAMAGUNDAM FLOATING SOLAR PLANT	3.26	0.11
NTPC, NPKunta	3.26	0.11
Mahindra Renewables Private Limited	3.26	0.11
RISING SUN ENENERGY PVT LIMITED	3.23	0.11
Karacham Wangtoo	3.15	0.11
Avaada RJHN Private Limited	3.14	0.11
TATA POWER GREEN Energy Limited	3.14	0.11
DEVIKOT SOLAR	3.12	0.10
ReNew Sun Bright Private Limited	3.08	0.10
Adani Renewable (RJ) Ltd	3.06	0.10
Eden Renewable Cite Private Limited	3.04	0.10
Avaada Solar, Pavagada	3.04	0.10
Serentica Renewables India 4 Private Limited	3.00	0.10
RENEW SURYA PRATAP	2.99	0.10
PARAMPUJYA SOLAR ENERGY PVT LTD	2.98	0.10
Maithon Power Ltd.	2.97	0.10
NTPC Vindhyachal Super Thermal Power Station Stage 5	2.92	0.10

Azure Solar	2.89	0.10
Manipur	2.86	0.10
Rapp 7&8	2.79	0.09
JSW RENEW ENERGY TWO LIMITED (KARUR)	2.78	0.09
Adani Power Limited - Raipur TPP	2.73	0.09
Adani Solar Energy Jaisalmer Two Private Limited, bhadla	2.73	0.09
GMR Warora Energy Ltd.	2.71	0.09
Korba Super Thermal Power Station Stage III	2.66	0.09
Avaada solarize	2.62	0.09
AMP Energy Green Six Private Limited	2.58	0.09
Transition Energy	2.57	0.09
NSPCL	2.57	0.09
NAPP	2.53	0.08
Meghalaya	2.48	0.08
AMP Energy Green Five Private Limited	2.46	0.08
Chuzachen	2.45	0.08
Mangalore Energies Private Limited	2.43	0.08
Farakka stage 3	2.42	0.08
SKS Power	2.40	0.08
Nepal	2.38	0.08
KSK mahanadi	2.36	0.08
Goa	2.36	0.08
LANCO AMARKANTAK	2.34	0.08
Adhunik Power & Natural Resources Ltd	2.30	0.08
GMR Kamalanga Energy Ltd.	2.25	0.08
Mejia Thermal Power station stage 2	2.21	0.07
RAP-C	2.19	0.07
RENEW SOLAR ENERGY (JHARKHAND) PRIVATE LIMITED	2.10	0.07
Adani Solar Energy Jaisalmer Two Private Limited (Project-2)	2.09	0.07
Azure Power Pavagada	2.05	0.07
ILFS	2.04	0.07
IRCON RENEWABLE POWER LIMITED Infirm	2.02	0.07
Adani Power Limited - Raigarh TPP	1.98	0.07
Railways	1.96	0.07
GRT Jewellers (India) Private Limited_GRTJIPL	1.93	0.06
Fortum finsurya	1.93	0.06
Powerica	1.91	0.06
Pondichery	1.88	0.06
DGEN Mega Power Project	1.87	0.06
Ranganadi HEP	1.82	0.06
RAP-B	1.79	0.06
TATA, Npkunta	1.79	0.06
TATA POWER RENEWABLE ENERGY LTD, Radhanesda	1.75	0.06
TP Saurya	1.74	0.06
Koldam Hydro Power	1.70	0.06
Gujarat State Electricity Corporation Limited phase-2	1.66	0.06
SJVN	1.64	0.05
DHAULIGANGA HEP	1.61	0.05
NTPC Kawas Solar	1.59	0.05
KOPPAL_RenewOjas_W_Infirm	1.56	0.05
GADAG_VENA_S	1.54	0.05
SALAL Hydro	1.53	0.05
GUJARAT INDUSTRIES POWER COMPANY LTD	1.53	0.05
Ratnagiri Gas and Power PVT Limited	1.48	0.05
Auraiya Solar	1.45	0.05
Renew Power pavagada	1.42	0.05
Assam Gas Based Power Plant(Kathalguri)	1.37	0.05
Chamera 3	1.32	0.04
NLC Expansion 1	1.30	0.04
TRN Energy	1.28	0.04
Athena Hisar Solar Power Pvt. Ltd	1.26	0.04
Sherisha Rooftop Solar SPV Four Private Limited	1.25	0.04
Nepal	1.24	0.04
Railways ER	1.22	0.04
NTPC Kawas Gas Plant	1.21	0.04
BALCO	1.16	0.04
Renew Surya Vihaan Private Limited	1.15	0.04
Renew Surya Vihaan Private Limited	1.15	0.04
Yarrow, Pavagada	1.15	0.04
Athena Karnal Solar Power Pvt. Ltd	1.14	0.04
KREDL, Pavagada	1.14	0.04

Chamera 1	1.13	0.04
Azure Npkunta	1.13	0.04
UNCHAHAR 3	1.11	0.04
INDIGRID SOLAR-I (AP) PRIVATE LIMITED	1.10	0.04
Sewa 2 Hydro Power	1.10	0.04
Athena Bhiwadi Solar Power Pvt. Ltd	1.05	0.04
NTPC Jhanor-Gandhar Gas Power plant	1.03	0.03
ReNew Solar Power Private Limited	1.03	0.03
PVG_AMPLUS_PAVAGADA	0.99	0.03
NAPTHA JHAKRI HEP	0.99	0.03
PVG_AMPLUS_TUMKUR	0.97	0.03
Nagaland	0.95	0.03
Kopili HEP	0.92	0.03
RKM Power	0.92	0.03
Mizoram	0.90	0.03
INDIGRID SOLAR-II (AP) PRIVATE LIMITED	0.88	0.03
Adani Solar Energy Four Private Limited	0.87	0.03
TANAKPUR	0.80	0.03
JSW Renew Energy Limited Savalaperi infirm	0.78	0.03
Dehar Hydro	0.71	0.02
Sainj Hydro Power	0.69	0.02
Agartala Gas Turbine Power Plant	0.66	0.02
Singoli Bhatwari HEP	0.65	0.02
BHAKRA	0.63	0.02
Kishanganga HEP	0.62	0.02
URI Stage 2	0.61	0.02
Simhadari Floating Solar	0.58	0.02
Sorang HEP	0.55	0.02
Gandhar Solar	0.52	0.02
AD hydro power	0.52	0.02
Koteshwar hps	0.50	0.02
Loktak HEP	0.50	0.02
SIMHAPURI(SEPL)	0.49	0.02
Gujarat State Electricity Corporation Limited, Radhanesda	0.48	0.02
Singrauli Solar	0.48	0.02
Tashiding Hydro Power	0.45	0.02
Jindal Steel & power Ltd. (Dangamahua CPP)	0.43	0.01
DULHASTI Hydro power	0.39	0.01
Jorethang Loop Hydro Electric Project	0.37	0.01
Bairasuil Hydro Power	0.35	0.01
LKPLST2G	0.34	0.01
Kopili- 2 HEP	0.33	0.01
SEMBCORP GREEN INFRA PRIVATE LIMITED (INFIRM)	0.33	0.01
Unchahar Solar	0.26	0.01
Rongnichu Hydro Electric Project	0.23	0.01
RANGIT	0.23	0.01
Lanco Budhil	0.23	0.01
Parbati 3	0.23	0.01
Pong Hydro Power	0.21	0.01
Talcher Solar	0.19	0.01
PALATANA	0.18	0.01
Kameng HEP	0.16	0.01
Rampur Hydro	0.16	0.01
Powergrid HVDC	0.14	0.005
NFL	0.13	0.004
Dadri Solar	0.12	0.004
Doyang HEP	0.12	0.004
Powergrid HVDC	0.09	0.003
AM Green Energy Private Limited Wind_Infirm	0.08	0.003
Pare_HEP	0.08	0.003
Chamera 2	0.06	0.002
Serentica Renewables India 1 Private Limited- Koppal (Infirm)	0.03	0.001
Power grid HVDC	0.01	0.0003
SINGRAULI HYDRO	0.0001	0.000003
<b>TOTAL</b>	<b>2987.61</b>	<b>100.00</b>
<b>Volume Imported by top 5 Regional Entities</b>	<b>570.84</b>	<b>19.11</b>

Source: NLDC

**Table-36: VOLUME AND PRICE OF RENEWABLE ENERGY CERTIFICATES (RECs) TRANSACTED THROUGH POWER EXCHANGES AND THROUGH TRADERS (BILATERAL), SEPTEMBER 2024**

Sr. No	Details of REC Transactions	Through Power Exchange			Bilateral through Traders
		IEX	PXIL	HPX	
1	Volume of Buy Bid	1066644	675247	258934	-
2	Volume of Sell Bid	6619870	6498233	4433333	-
3	Ratio of Buy Bid to Sell Bid Volume	0.16	0.10	0.06	-
4	Traded Volume (MWh)	1030628	640643	79449	241389
5	Weighted Average Price (₹/MWh)	111	111	112	114

Source: Power Exchanges & Grid-India REC Report

Note: 1 REC = 1 MWh

Under the CERC REC Regulations 2022, the categorization of RECs has been dispensed with and exchange of RECs through trading licensees has also been allowed

**Table-37(a): VOLUME AND PRICE OF CROSS BORDER TRADE THROUGH DAY AHEAD MARKET AT IEX, SEPTEMBER 2024**

Sr. No.	Neighbouring Country	Volume (MU)			Weighted Average Price (₹/kWh)	
		Sale	Purchase	Net*	Sale	Purchase
1	Nepal	298.46	0.00	-298.46	4.16	-
2	Bhutan	48.70	0.00	-48.70	4.67	-
	<b>Total</b>	<b>347.16</b>	<b>0.00</b>	<b>-347.16</b>	-	-

Source: IEX

\* Net indicates difference of volume purchased and sold by the respective neighbouring country

Note: No Cross Border transactions were recorded in DAM at PXIL and HPX

**Table-37(b): VOLUME AND PRICE OF CROSS BORDER TRADE THROUGH REAL TIME MARKET AT IEX, SEPTEMBER 2024**

Sr. No.	Neighbouring Country	Volume (MU)			Weighted Average Price (₹/kWh)	
		Sale	Purchase	Net*	Sale	Purchase
1	Nepal	20.61	0.00	-20.61	3.98	-
2	Bhutan	2.53	0.00	-2.53	4.36	-
	<b>Total</b>	<b>23.14</b>	<b>0.00</b>	<b>-23.14</b>	-	-

Source: IEX

\* Net indicates difference of volume purchased and sold by the respective neighbouring country

Note: No Cross Border transactions were recorded in RTM at PXIL and HPX



**Economics Division**  
**Central Electricity Regulatory Commission**  
**6th, 7th & 8th Floors, Tower B, World Trade Centre,**  
**Nauroji Nagar, New Delhi- 110029**